

PROOF FILED FOR RECORD JAN 19, 2005, AT 10:00 A.M. FEE 1-5.00-1.00/

COMPARED

Patricia A. Lee

BLACK HAWK COUNTY RECORDER

ENV TEKIPPE ENGINEERING PC 128 SOUTH VINE ST WEST UNION IA 52175

TEKIPPE ENGINEERING, P.C., 128 South Vine Street, West Union, Iowa 52175 Phone (563) 422-5131

UNITED STATES PUBLIC LAND SURVEY CORNER CERTIFICATE

OF

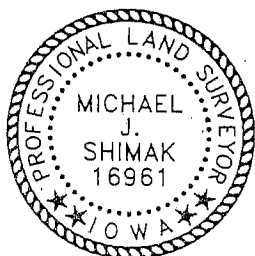
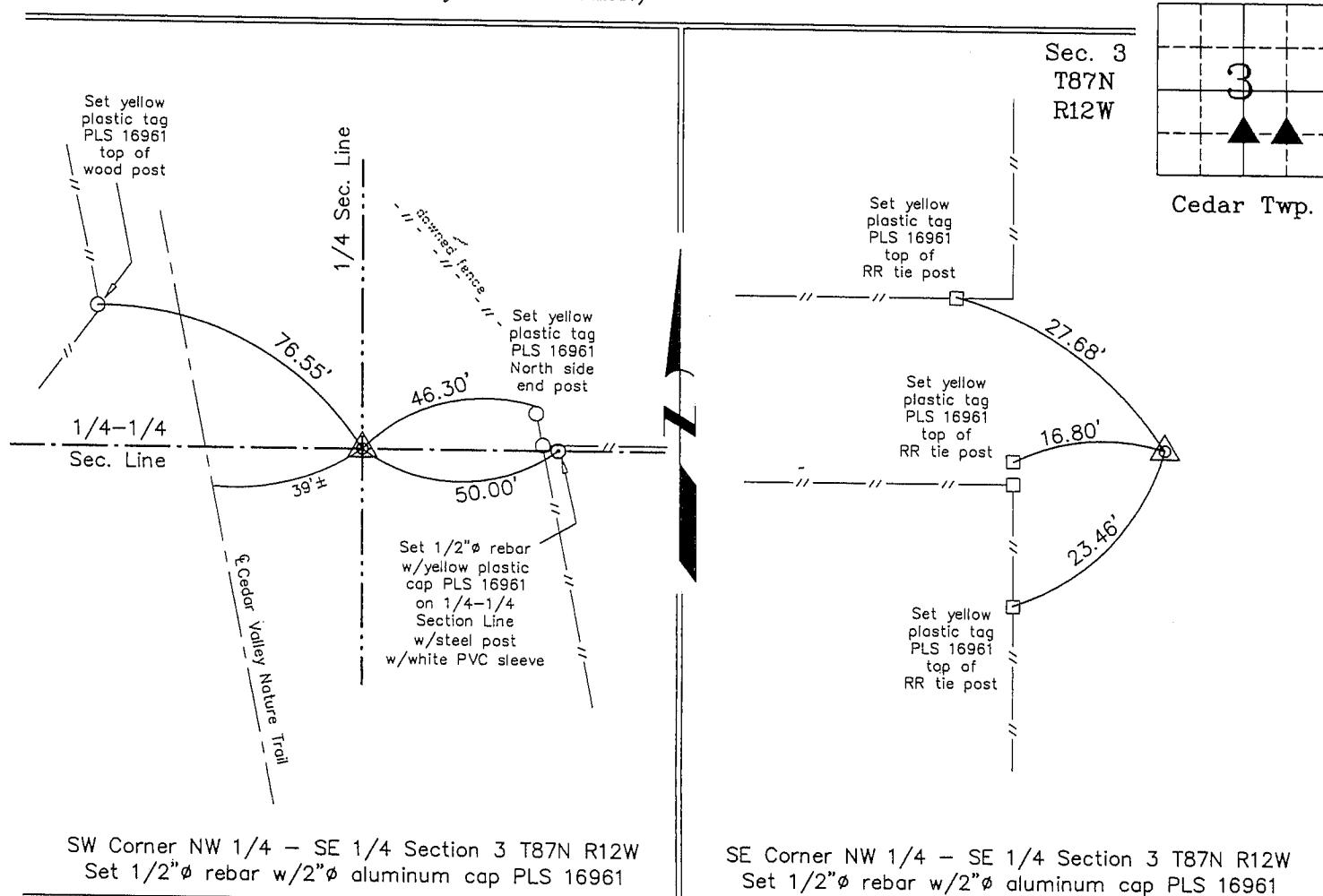
Land Survey Monuments situated in Section 3, Township 87 North, Range 12 West of the Fifth Principal Meridian, BLACK HAWK County, Iowa.Previously recorded in none in County Recorder's Office.
(book, page, document number, etc.)

(Show reason for preparing this certificate, the evidence and detailed procedures used in establishing the corner positions and monumentation found or placed.)

Monument Description and Remarks: SW Corner NW 1/4 - SE 1/4 Section 3 T87N R12W:
Set 1/2"Ø rebar w/2"Ø aluminum cap PLS 16961 equidistant and on line between the
S 1/4 Corner and the Center of the Section.SE Corner NW 1/4 - SE 1/4 Section 3 T87N R12W: Set 1/2"Ø rebar w/2"Ø aluminum
cap PLS 16961 at the intersection of 1/4-1/4 Section Lines after the standard
subdivision of the SE 1/4.

PLAN - VIEW

(Show a minimum of three reference ties to durable physical objects, relevant monuments and physical conditions that will enable recovery of the corner.)



I hereby certify that this land surveying document was prepared and the related survey work was performed by me or under my direct personal supervision and that I am a duly licensed Land Surveyor under the laws of the State of Iowa.

Michael J. Shimak January 19, 2005
Michael J. Shimak Date

License number 16961

My license renewal date is December 31, 2005.

Sheets covered by this seal: Individual

List Corners to be Indexed

Corners	Section	Twp.	Range
SW-NW-SE	3	87N	12W
SE-NW-SE	3	87N	12W

Project Number 04118.LS
FB. NRCS #3 PG. 12-22

X:\Section Corners\Sec. 03\3-87-12rs.dwg