

Paul H. Helland, 1107 Technology Parkway, Cedar Falls, Iowa 50613-6951, (319)-266-0161

UNITED STATES PUBLIC LAND SURVEY CORNER CERTIFICATE  
OF

LAND SURVEY MONUMENTS SITUATED IN SECTION NO. 2, TOWNSHIP NO. 87 NORTH, RANGE NO. 12 WEST OF THE FIFTH PRINCIPAL MERIDIAN, BLACK HAWK COUNTY, IOWA.  
PREVIOUSLY RECORDED IN N/A

(SHOW REASON FOR PREPARING THIS CERTIFICATE, THE EVIDENCE AND DETAILED PROCEDURES USED IN ESTABLISHING THE CORNER POSITIONS AND MONUMENTATION FOUND OR PLACED.)

MONUMENT DESCRIPTION AND REMARKS:

NO USPLSCC ON FILE. SURVEY COMPLETED IN THE SE 1/4 OF THE SW 1/4 OF SEC. 36-T88N-R12W.

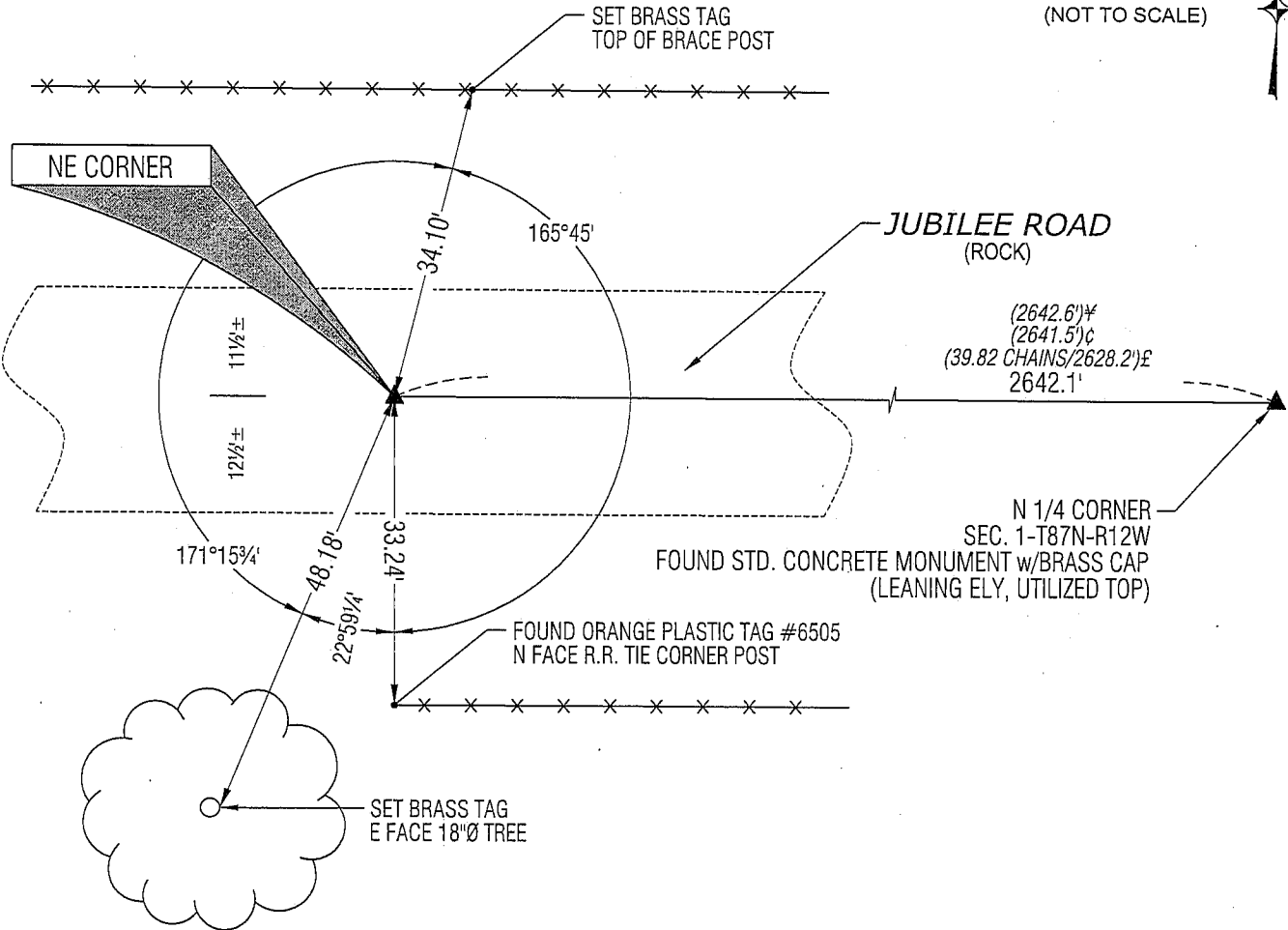
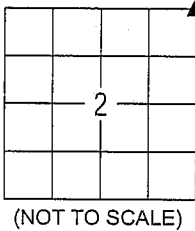
NE CORNER: AUDITOR'S SURVEY BK 1 PG 361 DATED 2/12/1869 CALLS FOR [STONE]. BLACK HAWK COUNTY ENGINEER REFERENCE TIES CALL FOR [S.C.M.]. UNRECORDED PLAT OF SURVEY DATED 6/4/1979 BY PAUL H. HELLAND CALLS FOR [FO. CONC. MON.]. FOUND NO. 4 REBAR 0.3' DEEP. REMOVED REBAR AND DUG A 2'±Ø HOLE 2'± AND PROBED TO A DEPTH OF 5'± DEEP IN ALL DIRECTIONS. NOTHING FOUND. RETURNED SAID NO. 4 TO ORIGINAL POSITION AND UTILIZED AS CORNER. THIS POSITION CORRESPONDS WITHIN REASON TO SAID UNRECORDED PLAT OF SURVEY BY PAUL H. HELLAND.

PLAN VIEW

(SHOW A MINIMUM OF THREE REFERENCE TIES TO DURABLE PHYSICAL OBJECTS, RELEVANT MONUMENTS AND PHYSICAL CONDITIONS THAT WILL ENABLE RECOVERY OF THE CORNER.)

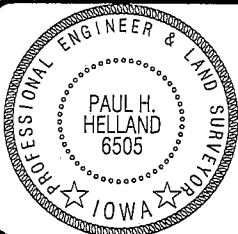
LEGEND

- (0.0')c PER UNRECORDED SURVEY BY PAUL H. HELLAND DATED 6/4/1979
- (0.0')w PER W.P.A. NOTES DATED 7/15/1941
- (0.0')e PER AUDITOR'S SURVEY BK 1 PG 361



HELLAND ENGINEERING & SURVEYING, LTD.  
1107 Technology Parkway  
Cedar Falls, Iowa 50613-6951  
(319)-266-0161

SHINER = 8D NAIL & 1 5/16\"Ø METAL SHINER  
BRASS TAG = 13/16\"Ø BRASS TAG  
OPC = PLASTIC CAP (O=ORANGE, R=RED, Y=YELLOW)  
(00') RECORDED AS FILE NAME: 08-280C3.DWG



I hereby certify that this land surveying document was prepared and the related survey work was performed by me or under my direct personal supervision and that I am a duly licensed Land Surveyor under the laws of the State of Iowa.  
*Paul H. Helland* 9/26/08  
Paul H. Helland  
License Number 6505  
My license renewal date is December 31, 2009.  
All pages or sheets are covered by this seal except:

LIST CORNERS TO BE INDEXED			
CORNER	SECTION	TOWNSHIP	RANGE
NE CORNER	2	87N	12W
SE CORNER	35	88N	12W
SW CORNER	36	88N	12W
NW CORNER	1	87N	12W

Rec.