

Env

WAYNE CLAASSEN ENGINEERING AND SURVEYING, INC.
P.O. BOX 898 WATERLOO, IOWA 50704-0898

PHONE: (VOICE) 319-235-6294
(FAX) 319-235-0028

UNITED STATES PUBLIC LAND SURVEY CORNER CERTIFICATE

Land Survey Monuments situated in Section 02, Township 87 North, Range 12 West, of the Fifth Principal Meridian, Black Hawk County, Iowa.

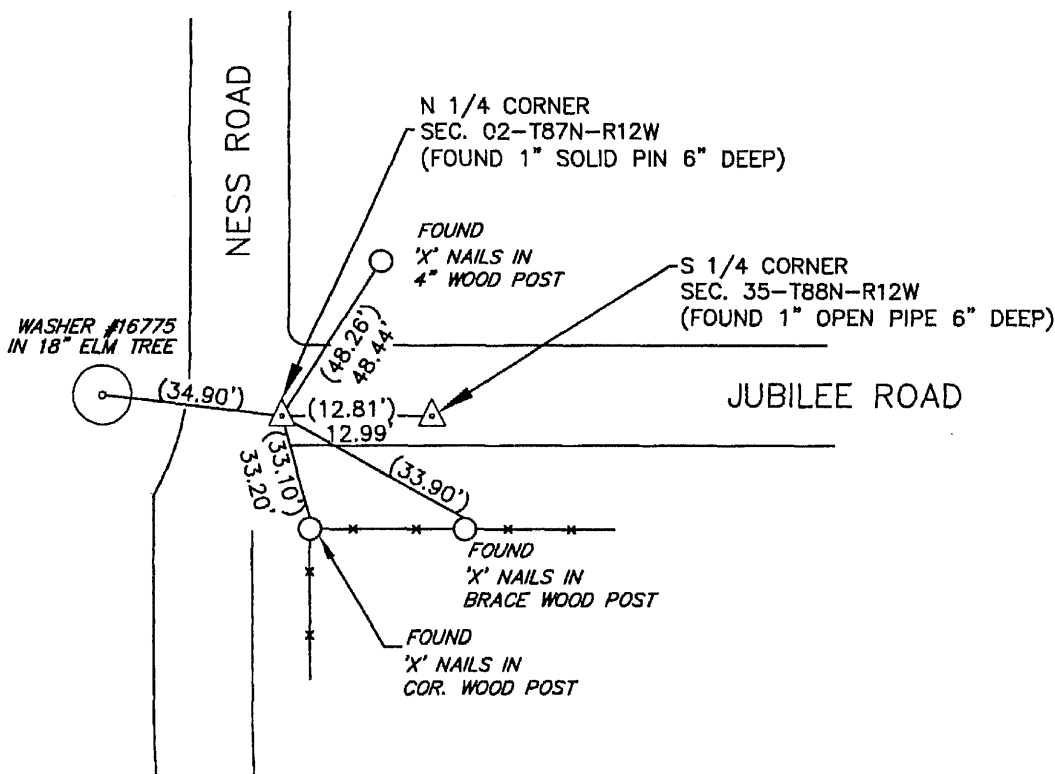
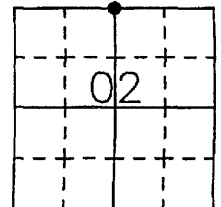
Previously recorded in _____ in County Recorder's Office.
(book, page, document number, etc.)

Monument Description and Remarks

As per WPA notes in the Black Hawk County Engineer's Office: on 8/20/1940 "At location indicated by random line, dug hole 5ft. square & 18" deep. Found lime stone 19"x7"x4". Lowered evidence in place and set C.M. on top marked 35/2." On 02/27/80 Set steel pin 6" deep. Found 1" solid pin 6" deep. This certificate was filed because there is no certificate on file.

PLAN - VIEW

00.00 DENOTES RECORD DIMENSION (WPA NOTES)
(00.00) DENOTES FIELD DIMENSION



BK 628-74

I hereby certify that this land surveying document was prepared and the related survey work was performed by me or under my direct personal supervision and that I am a duly Licensed Land Surveyor under the laws of the State of Iowa.

Signature: David L. Schell
David L. Schell, L.S.

Date: APRIL 01, 2010 Lic. No. 16775

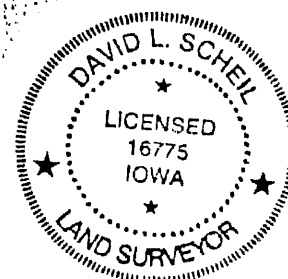
Pages or Sheets Covered by this Seal: THIS SHEET ONLY.

My license renewal date is December 31, 2010

SEAL

List Corners to be Indexed

Corners	Section	Twp	Range
N 1/4 CORNER,	02	87 N	12 W



✓ 14.00
✓ 4.00
✓ 4.00