

14

Date: Oct 14, 2008 1:25:24 pm

Aud Fee:	0.00	Rec Fee:	5.00
----------	------	----------	------

Trans Tax:	0.00	Rec Management Fee:	1.00
------------	------	---------------------	------

E-Com Fee:	1.00	Non-Standard Page Fee:	0.00
------------	------	------------------------	------

Filed for record in Black Hawk County, Iowa

Judith A. McCarthy, County Recorder

P

Z

UNITED STATES PUBLIC LAND SURVEY CORNER CERTIFICATE OF

PREVIOUSLY RECORDED IN N/A

(SHOW REASON FOR PREPARING THIS CERTIFICATE, THE EVIDENCE AND DETAILED PROCEDURES USED IN ESTABLISHING THE CORNER POSITIONS AND MONUMENTATION FOUND OR PLACED.)

MONUMENT DESCRIPTION AND REMARKS:

NO USPLSCC ON FILE. SURVEY COMPLETED IN THE SE 1/4 OF THE SW 1/4 OF SEC. 36-T88N-R12W.

→ **N 1/4 CORNER:** AUDITOR'S SURVEY BK 1 PG 361 DATED 2/12/1869 CALLS FOR [STONE]. BLACK HAWK COUNTY ENGINEER REFERENCE TIES CALL FOR [S.C.M.]. UNRECORDED PLAT OF SURVEY BY PAUL H. HELLAND DATED 6/4/1979 CALLS FOR [FO. CONC. MON.]. FOUND STD. CONCRETE MONUMENT w/BRASS CAP (0.3' DEEP) LEANING SLIGHTLY ELY. UTILIZED TOP OF SAID C.M. AS CORNER. SET NO. 4 REBAR 0.23' E FOR MAGNETIC DETECTION ONLY.

PLAN VIEW

(SHOW A MINIMUM OF THREE REFERENCE TIES TO DURABLE PHYSICAL OBJECTS, RELEVANT MONUMENTS AND PHYSICAL CONDITIONS THAT WILL ENABLE RECOVERY OF THE CORNER.)

NE CORNER
SE 1/4 SW 1/4
SEC. 36-T88N-R12W
SET CORNER IN FENCE
USING FIELD EVIDENCE

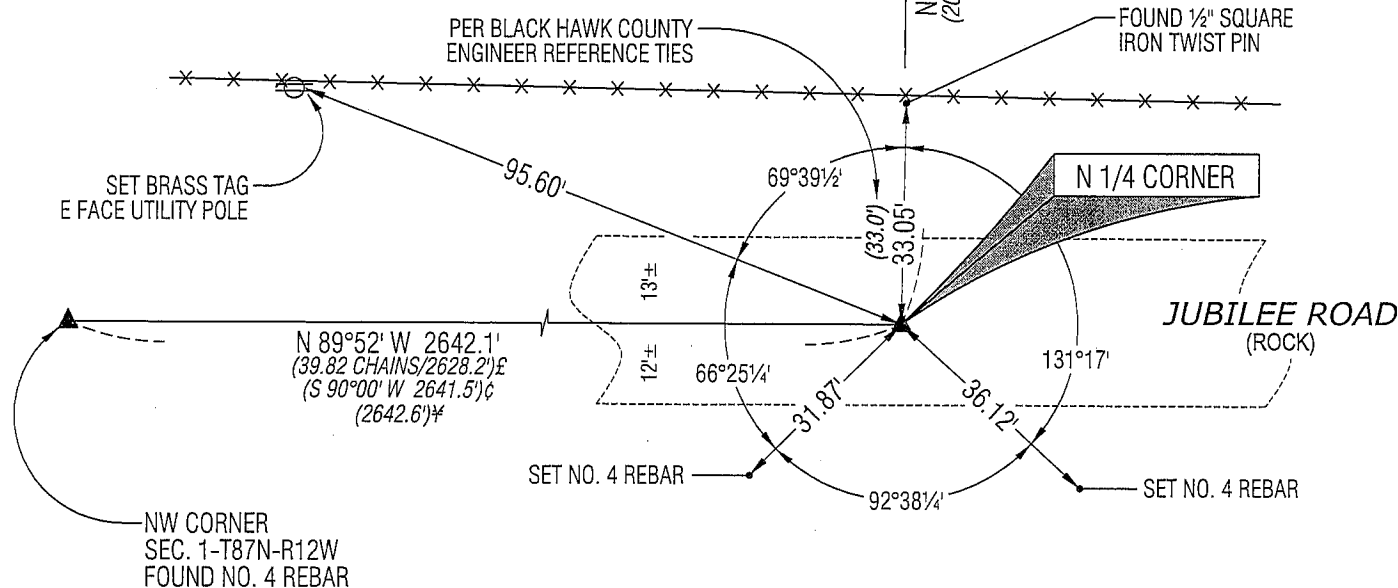
(NOT TO SCALE)

LEGEND

(0.0') PER UNRECORDED SURVEY BY PAUL H. HELLAND DATED 6/4/1979

(0.0') \neq PER W.P.A. NOTES DATED 7/15/1941

(0.0')£ PER AUDITOR'S SURVEY BK 1 PG 361

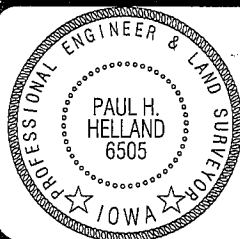


(BEARINGS ARE ASSUMED)



HELLAND ENGINEERING & SURVEYING, LTD.
1107 Technology Parkway
Cedar Falls, Iowa 50613-6951
(319)-266-0161

SHINER = 8D NAIL & 1 5/16"Ø METAL SHINER
BRASS TAG = 13/16"Ø BRASS TAG
OPC = PLASTIC CAP (O=ORANGE, R=RED, Y=YELLOW)
(00) RECORDED AS FILE NAME: 08-280C1.DWG



I hereby certify that this land surveying document was prepared and the related survey work was performed by me or under my direct personal supervision and that I am a duly licensed Land Surveyor under the laws of the State of Iowa.

Paul H. Helland
License Number 6505
My license renewal date is December 31, 2009.
All pages or sheets are covered by this seal except:

LIST CORNERS TO BE INDEXED

CORNER	SECTION	TOWNSHIP	RANGE
N 1/4 CORNER	1	87N	12W
S 1/4 CORNER	36	88N	12W

Rec.