

CRAWFORD ENGINEERING & SURVEYING
205 SECOND AVE NE
PO BOX 793
INDEPENDENCE, IA 50644

I 12
P
Z

Document Number: 2008000823
Date: Jul 11, 2007 4:30:00 pm
Aud Fee: 0.00 Rec Fee: 5.00
Trans Tax: 0.00 Rec Management Fee: 1.00
E-Com Fee: 1.00 Non-Standard Page Fee: 0.00
Filed for record in Black Hawk County, Iowa
Judith A. McCarthy, County Recorder

DANIEL T. CRAWFORD, P.E. & L.S. Crawford Engineering & Surveying, Inc., Independence, Iowa 319/334-7077
UNITED STATES PUBLIC LAND SURVEY CORNER CERTIFICATE
OF

Land Survey Monuments situated in Section 36, Township 87 N, Range 11 W, of the Fifth Principal Meridian, Black Hawk County, Iowa.
Previously recorded in N/A in County Recorder's Office.

Monument Description and Remarks:

Reason for preparing certificate: Current certificate is not on file.

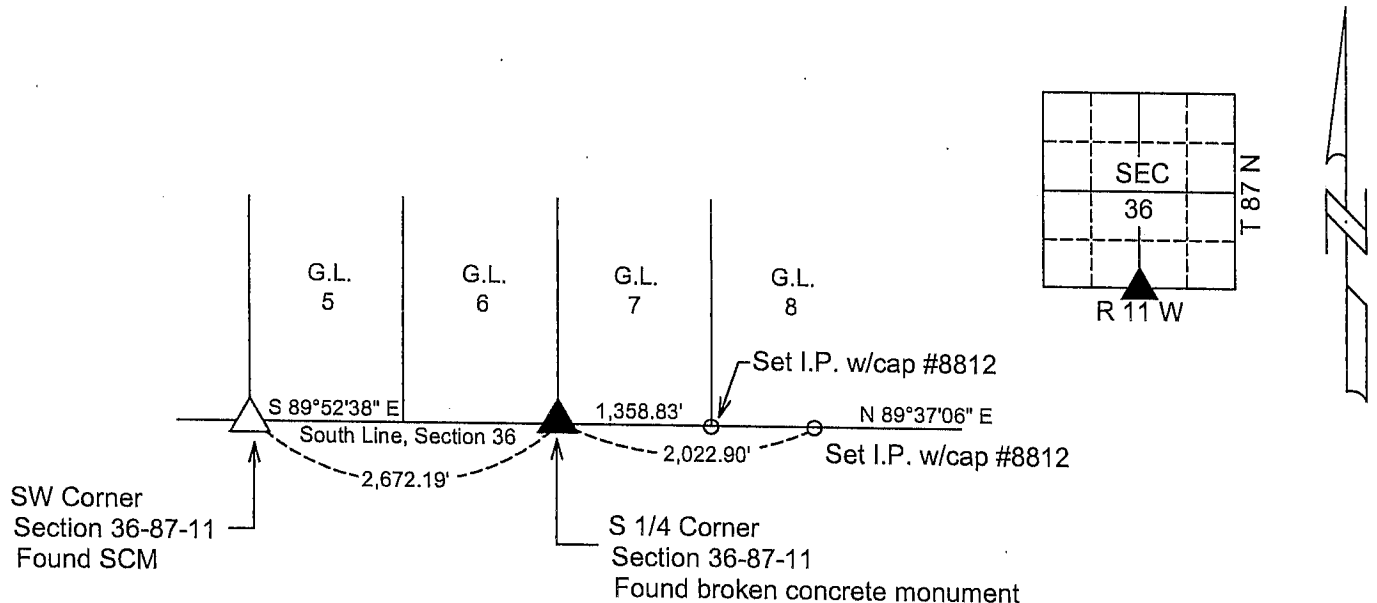
Evidence and detailed procedure used to establish corner position: Corner position established and monumented 1941 WPA survey.

Monumentation found or placed: Found base of broken monument 1.5' deep.

Exhaustive search located broken off top of stamped SCM and undisturbed base.

PLAN-VIEW

(Show a minimum of three reference ties to durable physical objects, relevant monuments and physical conditions that will enable recovery of the corner).



I hereby certify that the survey work was completed and this land surveying document was prepared by me or under my direct personal supervision and that I am a duly licensed land surveyor under the laws of the State of Iowa.

Signature: Daniel T. Crawford
DANIEL T. CRAWFORD, P.E. & L.S.

Date: 6-18-07 Reg. No. 8812

My license renewal date is December 31, 2007

Corners	Section	Twp.	Range
S 1/4 Corner	36	87 N	11 W

SEAL

