

SC
MISC
~~INDEX~~
MARGIN
PROOF
COMPARE

013512
BLACK HAWK COUNTY IOWA:SS
Filed for record MAR 21, 2000 at
4:00 P.M. and recorded in Book 337
of MISC Page 747
Curtis J. Loo RECORDER
FEE 1-5.00/
HELLAND ENGINEERING & SURVEYING, LTD.

Paul H. Helland, 1107 Technology Parkway, Cedar Falls, Iowa 50613-6951, (319)-266-0161

UNITED STATES PUBLIC LAND SURVEY CORNER CERTIFICATE OF

LAND SURVEY MONUMENTS SITUATED IN SECTION NO. 35, TOWNSHIP NO. 87 NORTH, RANGE
NO. 11 WEST OF THE FIFTH PRINCIPAL MERIDIAN, BLACK HAWK COUNTY, IOWA.
PREVIOUSLY RECORDED IN BOOK _____, PAGE _____.

(SHOW REASON FOR PREPARING THIS CERTIFICATE, THE EVIDENCE AND DETAILED PROCEDURES USED IN ESTABLISHING THE
CORNER POSITIONS AND MONUMENTATION FOUND OR PLACED.)

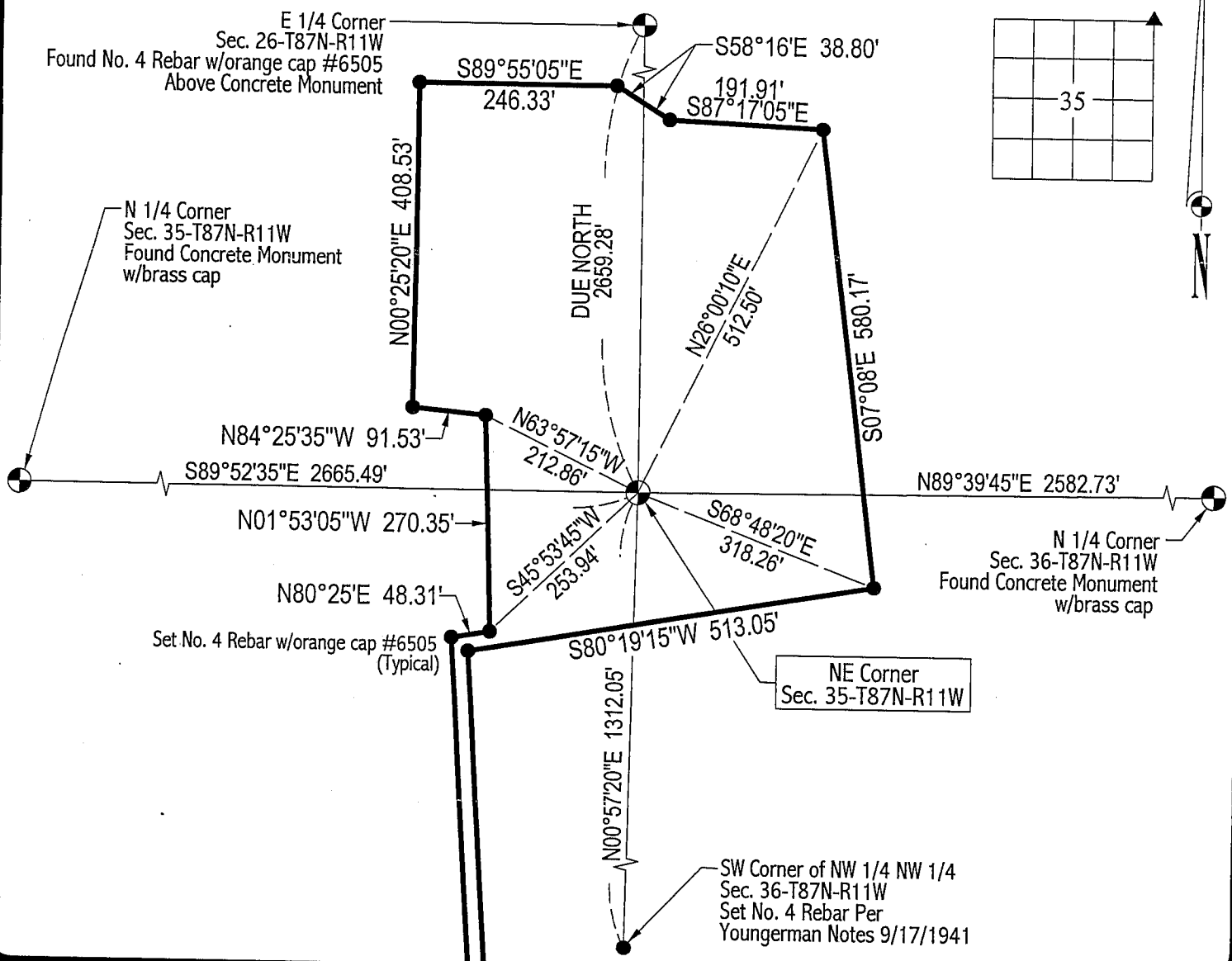
MONUMENT DESCRIPTION AND REMARKS:

SURVEY DONE IN SEC.S 25, 26, 35 & 36.

NE CORNER: All county reference ties are lost. Intersected chaining distances from E 1/4 Corner of Sec. 26 and
1/4 1/4 fence line West. Found broken off top (0.5') of concrete monument w/brass cap 2' deep. With help of Black Hawk
County Engineer's Office, found the base of the concrete monument 1.2' deep and on its side 2' +/- West of location the top
was found at. Youngerman notes (1941) stated no evidence of corner was found and he reestablished corner. Placed base
of concrete monument @ location the top was found, placed top of monument (1' of monument missing) on base and supported
with No. 4 rebars on all four sides.

PLAN VIEW

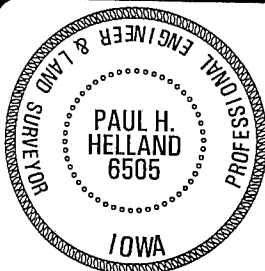
(SHOW A MINIMUM OF THREE REFERENCE TIES TO DURABLE PHYSICAL OBJECTS, RELEVANT MONUMENTS AND PHYSICAL
CONDITIONS THAT WILL ENABLE RECOVERY OF THE CORNER.)



HES

HELLAND ENGINEERING & SURVEYING, LTD.
1107 Technology Parkway
Cedar Falls, Iowa 50613-6951
(319)-266-0161

FILE NAME: 00-116CA.DRG



I hereby certify that this land surveying document was prepared
and the related survey work was performed by me or under my
direct personal supervision and that I am a duly licensed Land
Surveyor under the laws of the State of Iowa.

Paul H. Helland 3/20/00
Paul H. Helland
License Number 6505

My license renewal date is December 31, 2001.
All pages or sheets are covered by this seal except:

LIST CORNERS TO BE INDEXED

CORNER	SECTION	TOWNSHIP	RANGE
NE CORNER	35	87N	11W

Bk. 337 p. 747