

INDEX 11  
MARGIN  
PROOF  
COMPARE

BLACK HAWK COUNTY IOWA:SS **028111**  
Filed for record APR 17, 2002 at  
4:00 P.M. and recorded in Book \_\_\_\_\_  
of \_\_\_\_\_ Page \_\_\_\_\_  
Paul H. Helland RECORDER  
FEE 1-5.00X  
HELLAND ENGINEERING & SURVEYING LTD

Paul H. Helland, 1107 Technology Parkway, Cedar Falls, Iowa 50613-6951, (319)-266-0161

## UNITED STATES PUBLIC LAND SURVEY CORNER CERTIFICATE OF

LAND SURVEY MONUMENTS SITUATED IN SECTION NO. 33, TOWNSHIP NO. 87 NORTH, RANGE  
NO. 11 WEST OF THE FIFTH PRINCIPAL MERIDIAN, BLACK HAWK COUNTY, IOWA.

PREVIOUSLY RECORDED IN BOOK \_\_\_\_\_, PAGE \_\_\_\_\_.

(SHOW REASON FOR PREPARING THIS CERTIFICATE, THE EVIDENCE AND DETAILED PROCEDURES USED IN ESTABLISHING THE  
CORNER POSITIONS AND MONUMENTATION FOUND OR PLACED.)

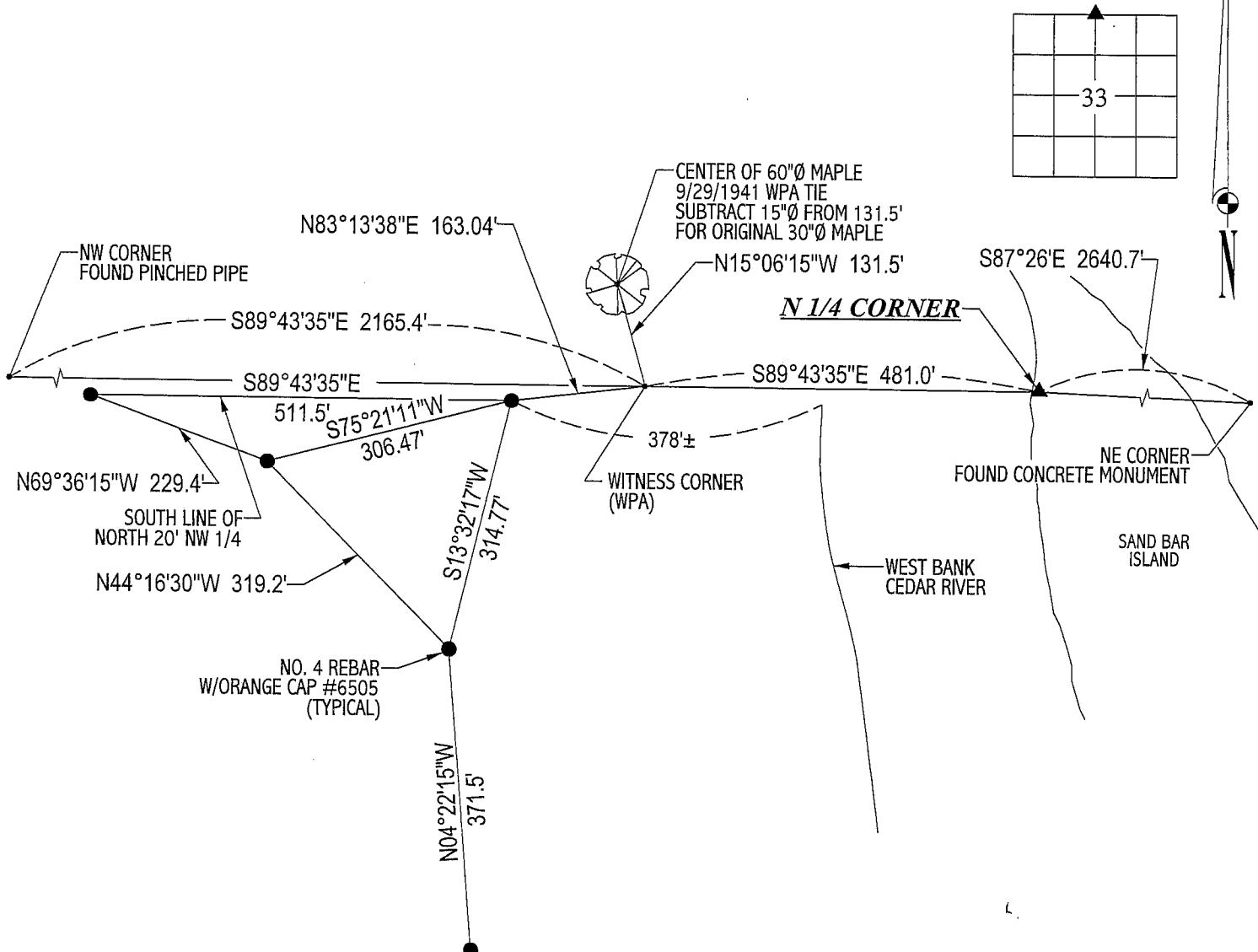
### MONUMENT DESCRIPTION AND REMARKS:

SURVEY DONE IN N 1/2 OF SEC. 33-T87N-R11W. NO CERTIFICATE ON FILE IN BLACK HAWK COUNTY, IOWA.

N 1/4 CORNER: WPA NOTES DATED 9/20/1941 & 9/29/1941 CALL FOR A CONCRETE MONUMENT SET @ N 1/4 CORNER AND A WITNESS  
CORNER SET 481' WEST OF THE N 1/4 CORNER. C.M. @ N 1/4 CORNER OBLITERATED BY THE CEDAR RIVER. THE N 1/4 CORNER WAS  
ESTABLISHED USING A LIMESTONE 661.6 FEET EAST OF THE NW CORNER OF SAID SEC. 33 AND PRORATING DISTANCE EAST.  
LIMESTONE WAS EXCAVATED FOR, BUT NONE WAS FOUND. WITNESS CORNER WAS ALSO OBLITERATED BY THE CEDAR RIVER, CORNER  
FALLS 6' BELOW & 10'± EAST OF FORMER WEST BANK OF THE CEDAR RIVER IN LOWLAND. FOUND ONE REMAINING BEARING TREE  
(60" MAPLE) TO SAID WITNESS CORNER 130.25' NW PER WPA NOTES. REESTABLISHED WITNESS CORNER LOCATION BY INTERSECTING  
BEARING TREE DISTANCE 130.25' AND STATIONING 2165.4' FROM THE NW CORNER. SET A MEANDER POINT ON THE SOUTH LINE OF THE  
NORTH 20 FEET OF THE NW 1/4 OF SEC. 33.

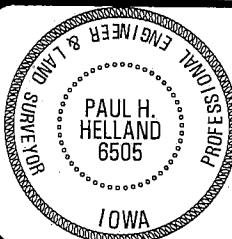
### PLAN VIEW

(SHOW A MINIMUM OF THREE REFERENCE TIES TO DURABLE PHYSICAL OBJECTS, RELEVANT MONUMENTS AND PHYSICAL  
CONDITIONS THAT WILL ENABLE RECOVERY OF THE CORNER.)



HELLAND ENGINEERING & SURVEYING, LTD.  
1107 Technology Parkway  
Cedar Falls, Iowa 50613-6951  
(319)-266-0161

FILE NAME: 02-147C2.DRG



I hereby certify that this land surveying document was prepared  
and the related survey work was performed by me or under my  
direct personal supervision and that I am a duly licensed Land  
Surveyor under the laws of the State of Iowa.

Paul H. Helland  
Paul H. Helland  
License Number 6505  
My license renewal date is December 31, 2003.  
All pages or sheets are covered by this seal except:

LIST CORNERS TO BE INDEXED  
CORNER SECTION TOWNSHIP RANGE  
N 1/4 CORNER 33 87N 11W