

UNITED STATES PUBLIC LAND SURVEY CORNER CERTIFICATE OF

LAND SURVEY MONUMENTS SITUATED IN SECTION NO. 33, TOWNSHIP NO. 87 NORTH, RANGE NO. 11 WEST OF THE FIFTH PRINCIPAL MERIDIAN, BLACK HAWK COUNTY, IOWA. PREVIOUSLY RECORDED IN BOOK , PAGE .

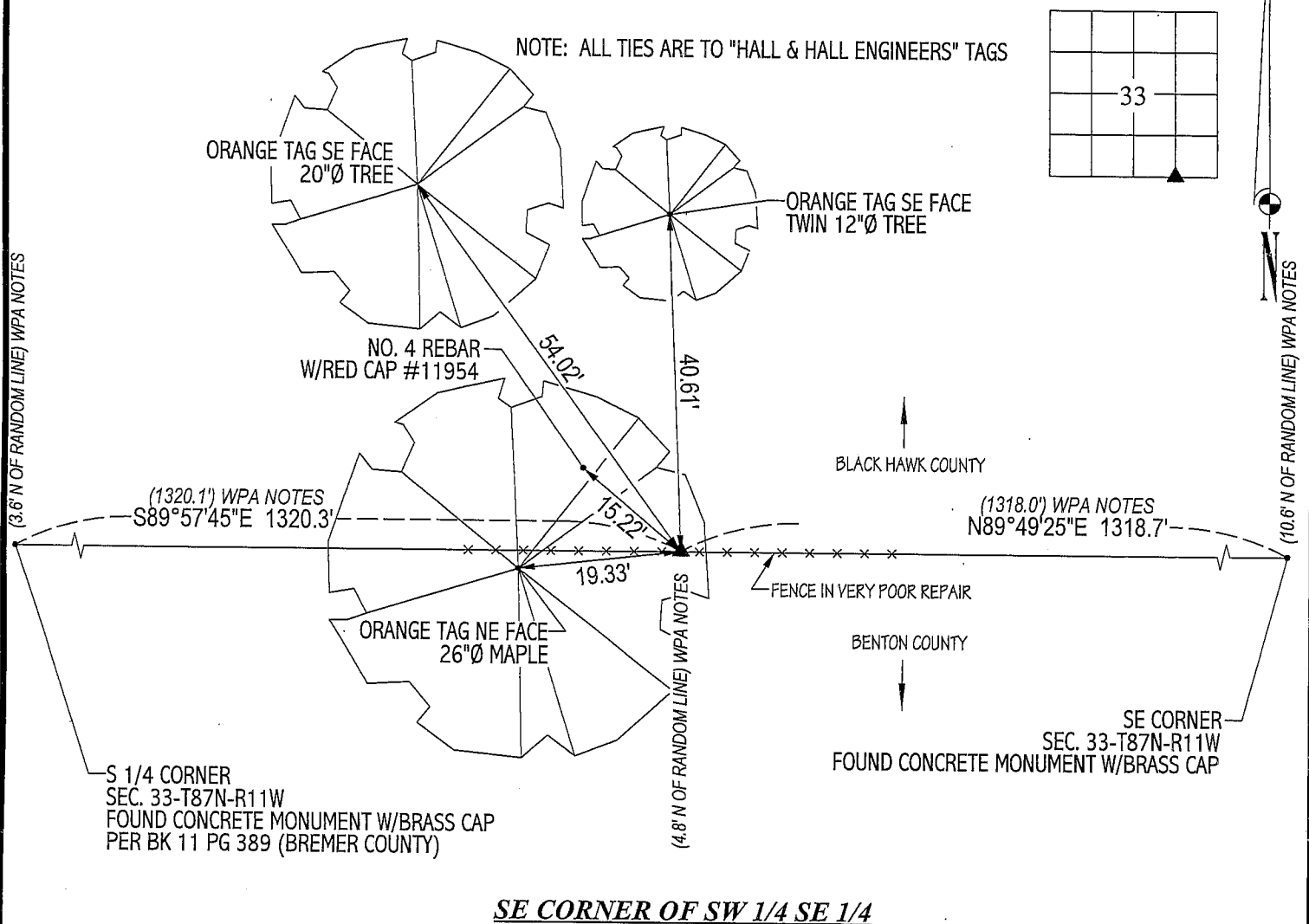
(SHOW REASON FOR PREPARING THIS CERTIFICATE, THE EVIDENCE AND DETAILED PROCEDURES USED IN ESTABLISHING THE CORNER POSITIONS AND MONUMENTATION FOUND OR PLACED.)

MONUMENT DESCRIPTION AND REMARKS:

NO CORNER CERTIFICATE ON FILE. SURVEY DONE IN NWFRL 1/4 NEFRL 1/4 OF SEC. 4-T86N-R11W, BENTON COUNTY, IOWA.
SE CORNER OF SW 1/4 SE 1/4: BENTON COUNTY ENGINEER HAS NO TIES FOR CORNER. BLACK HAWK COUNTY AUDITOR'S SURVEY
DATED 10/26/1870 ESTABLISHED CORNER MIDWAY BETWEEN THE S 1/4 CORNER & SE CORNER OF SEC. 33-T87N-R11W 19.96 CHAINS FROM
SAID CORNERS. BLACK HAWK COUNTY WPA TIES CALL FOR LIMESTONE AT CORNER. FOUND 3"x8"x?" DEEP LIMESTONE W/DISTINCT POINT
IN E-W FENCE LINE. TOP OF LIMESTONE IS FLUSH. FOUND REMNANTS OF VERY OLD FENCING RUNNING SOUTH FROM SAID LIMESTONE.
SET NO. 4 REBAR W/ORANGE CAP #6505, 0.12' SOUTH OF POINT ON LIMESTONE FOR MAGNETIC DETECTION. LIMESTONE AS FOUND IS
11.57' SOUTH & 9.90' EAST OF FOUND NO. 4 REBAR W/RED CAP #11954 (REFER TO PLAT OF SURVEY RECORD IN BK 11 PG 358).

PLAN VIEW

(SHOW A MINIMUM OF THREE REFERENCE TIES TO DURABLE PHYSICAL OBJECTS, RELEVANT MONUMENTS AND PHYSICAL CONDITIONS THAT WILL ENABLE RECOVERY OF THE CORNER.)

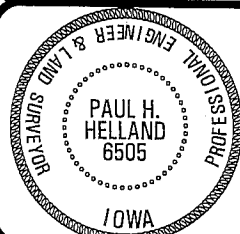


SE CORNER OF SW 1/4 SE 1/4



HELLAND ENGINEERING & SURVEYING, LTD.
1107 Technology Parkway
Cedar Falls, Iowa 50613-6951
(319)-266-0161

FILE NAME: 02-164C4.DRG



I hereby certify that this land surveying document was prepared and the related survey work was performed by me or under my direct personal supervision and that I am a duly licensed Land Surveyor under the laws of the State of Iowa.

Paul H. Helland
License Number 6505
My license renewal date is December 31, 2003.
All pages or sheets are covered by this seal except:

LIST CORNERS TO BE INDEXED

<u>CORNER</u>	<u>SECTION</u>	<u>TOWNSHIP</u>	<u>RANGE</u>
SE CORNER SW 1/4 SE 1/4	33	87N	11W