

INDEX ~~18~~  
MARGIN  
PROOF  
COMPARE

BLACK HAWK COUNTY IOWA:SS 028112  
Filed for record APR 17, 2002 at  
4:00 P.M. and recorded in Book \_\_\_\_\_  
of \_\_\_\_\_ Page \_\_\_\_\_  
*Paul H. Helland* RECORDER  
FEE 1-5.00X  
HELLAND ENGINEERING & SURVEYING LTD

Paul H. Helland, 1107 Technology Parkway, Cedar Falls, Iowa 50613-6951, (319)-266-0161

## UNITED STATES PUBLIC LAND SURVEY CORNER CERTIFICATE OF

LAND SURVEY MONUMENTS SITUATED IN SECTION NO. 33, TOWNSHIP NO. 87 NORTH, RANGE  
NO. 11 WEST OF THE FIFTH PRINCIPAL MERIDIAN, BLACK HAWK COUNTY, IOWA.

PREVIOUSLY RECORDED IN BOOK \_\_\_\_\_, PAGE \_\_\_\_\_.

(SHOW REASON FOR PREPARING THIS CERTIFICATE, THE EVIDENCE AND DETAILED PROCEDURES USED IN ESTABLISHING THE  
CORNER POSITIONS AND MONUMENTATION FOUND OR PLACED.)

### MONUMENT DESCRIPTION AND REMARKS:

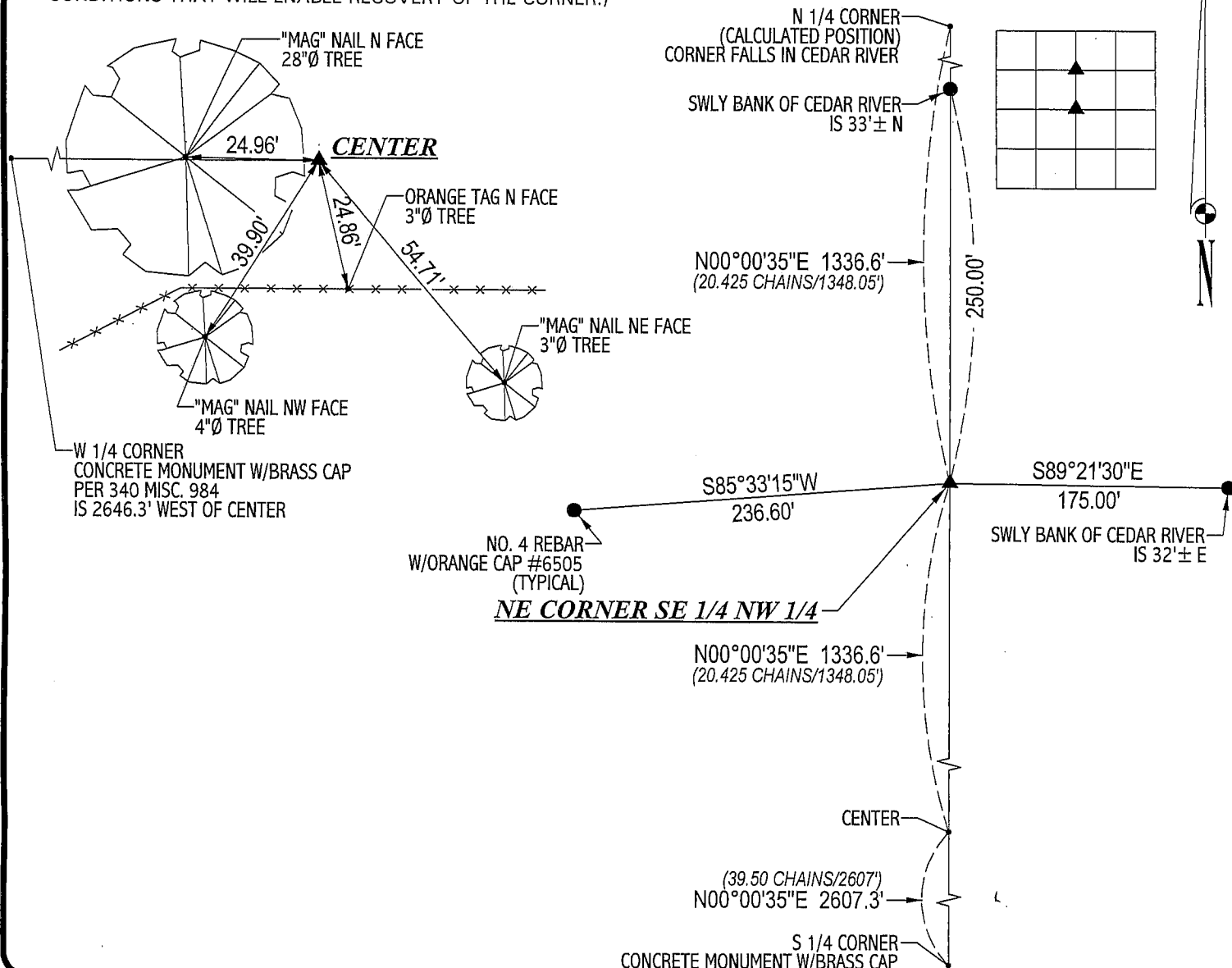
SURVEY DONE IN N 1/2 OF SEC. 33-T87N-R11W. NO CERTIFICATES ON FILE IN BLACK HAWK COUNTY, IOWA.

NE CORNER SE 1/4 NW 1/4: CORNER ESTABLISHED PER AUDITOR'S SURVEY DATED 10/26/1870. SET NO. 4 REBAR W/ORANGE CAP #6505  
ON STRAIGHT LINE BETWEEN THE CALCULATED N 1/4 CORNER AND THE S 1/4 CORNER OF SEC. 33 AND IN LINE W/VERY OLD RR TIE  
CORNER POST 2.6' WEST. BEARING TREES PER AUDITOR'S SURVEY DATED 10/26/1870 ARE LOST.

CENTER: CORNER ESTABLISHED PER AUDITOR'S SURVEY DATED 10/26/1870. BEARING TREES ARE LOST. SET NO. 4 REBAR W/ORANGE  
CAP #6505 ON STRAIGHT LINE BETWEEN THE CALCULATED N 1/4 CORNER AND THE S 1/4 CORNER OF SEC. 33 AT THE DOUBLED DISTANCE  
SOUTH FROM THE NE CORNER OF SE 1/4 NW 1/4. EXCAVATED 8' x 3.5' DEEP @ LOCATION, NO EVIDENCE FOUND.

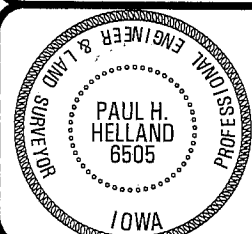
### PLAN VIEW

(SHOW A MINIMUM OF THREE REFERENCE TIES TO DURABLE PHYSICAL OBJECTS, RELEVANT MONUMENTS AND PHYSICAL  
CONDITIONS THAT WILL ENABLE RECOVERY OF THE CORNER.)



**HELLAND ENGINEERING & SURVEYING, LTD.**  
1107 Technology Parkway  
Cedar Falls, Iowa 50613-6951  
(319)-266-0161

FILE NAME: 02-147C3.DRG



I hereby certify that this land surveying document was prepared  
and the related survey work was performed by me or under my  
direct personal supervision and that I am a duly licensed Land  
Surveyor under the laws of the State of Iowa.

*Paul H. Helland 4/17/02*  
Paul H. Helland  
License Number 6505  
My license renewal date is December 31, 2003.  
All pages or sheets are covered by this seal except:

### LIST CORNERS TO BE INDEXED

CORNER	SECTION	TOWNSHIP	RANGE
NE CORNER	33	87N	11W
SE 1/4 NW 1/4			
CENTER	33	87N	11W

0246-348