

SC
Misc

BLACK HAWK COUNTY IOWA:SS
Filed for recorded Oct 28, 19 97 at
4:00 P .M. and recorded in Book 327
of Misc Page 788
FEE 1-5.00/
PAUL HELLAND

Recorder

County Assessor

PAUL H. HELLAND, 1107 TECHNOLOGY PARKWAY, CEDAR FALLS, IOWA 50613, (319)-266-01

UNITED STATES PUBLIC LAND SURVEY CORNER CERTIFICATE OF

Land Survey Monuments situated in Section 32, Township 87, Range 11, of the Fifth Principal Meridian, BLACK HAWK County, Iowa.
Previously recorded in Book , Page .

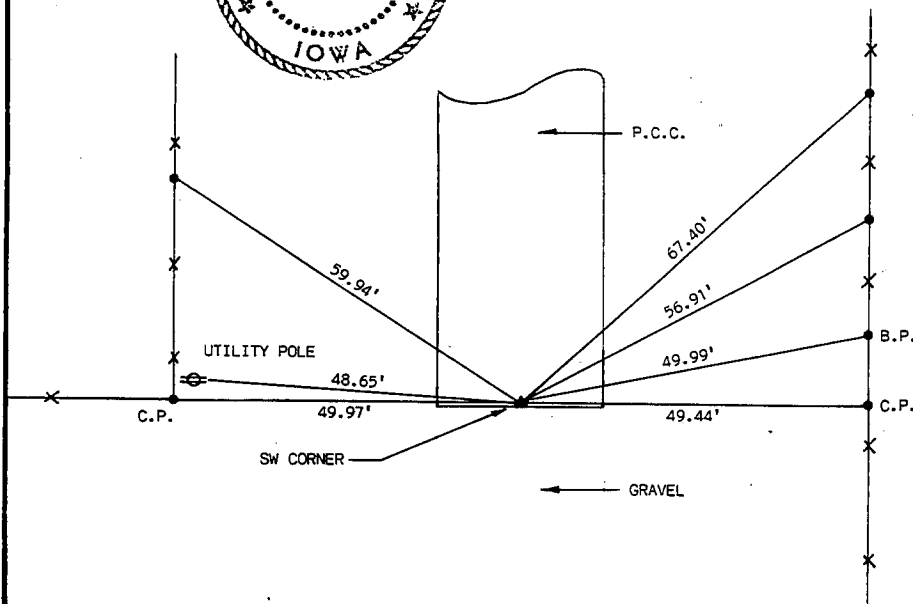
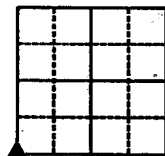
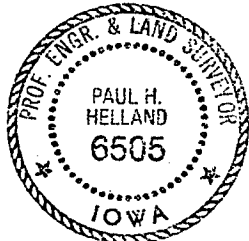
(Show reason for preparing this certificate, the evidence and detailed procedures used in establishing the corner positions and monumentation found or placed.)

Monument Description and Remarks: SURVEY DONE IN E 1/2 SEC. 31-87-11

SW CORNER - FOUND 1/2" SQUARE PIN IN CONCRETE SLAB, 0.8' NORTH OF SOUTH EDGE & 0.4' EAST OF C. JOINT

PLAN - VIEW

(Show a minimum of three reference ties to durable physical objects, relevant monuments and physical conditions that will enable recovery of the corner.)



I HEREBY CERTIFY THAT THIS PLAT, MAP, SURVEY OR REPORT WAS MADE BY ME OR UNDER MY DIRECT PERSONAL SUPERVISION AND THAT I AM A DULY REGISTERED LAND SURVEYOR UNDER THE LAWS OF THE STATE OF IOWA

PAUL H. HELLAND, P.E. & R.L.S. IOWA REGISTRATION NO. 6505
MY REGISTRATION EXPIRES DECEMBER 31, 1997



HELLAND ENGINEERING
& SURVEYING, LTD.
1107 TECHNOLOGY PARKWAY
CEDAR FALLS, IOWA 50613
319-266-0161

List Corners to be Indexed

Corners	Section	Twp	Range
SW	32	87	11