

Number: 202300007256
Recorded: 11/4/2022 at 2:16:53.0 PM
County Recording Fee: \$7.00
Iowa E-Filing Fee: \$3.00
Combined Fee: \$10.00
Revenue Tax:
Sandie L. Smith, RECORDER
Black Hawk County, Iowa

Prepared by & Return to: Isaiah M. Reicks, 2206 East Bremer Avenue, Waverly, IA 50677, Ph. 319-483-5187

United States Public Land Survey Corner Certificate

Land Survey Monument situated in
Section 32, Township 87 North, Range 11 West of the Fifth Principal Meridian, **Black Hawk** County, Iowa.
Not on file in the County Recorder's Office.

This certificate is being prepared in compliance with Iowa Code Chapter 355.11 because:

-
- ☒

 There is no certificate on file for this corner.

☐

 There are no longer three valid ties of record.

☐

 There are changes to reference ties of record.

☐

 There is change of monumentation of record.

☐

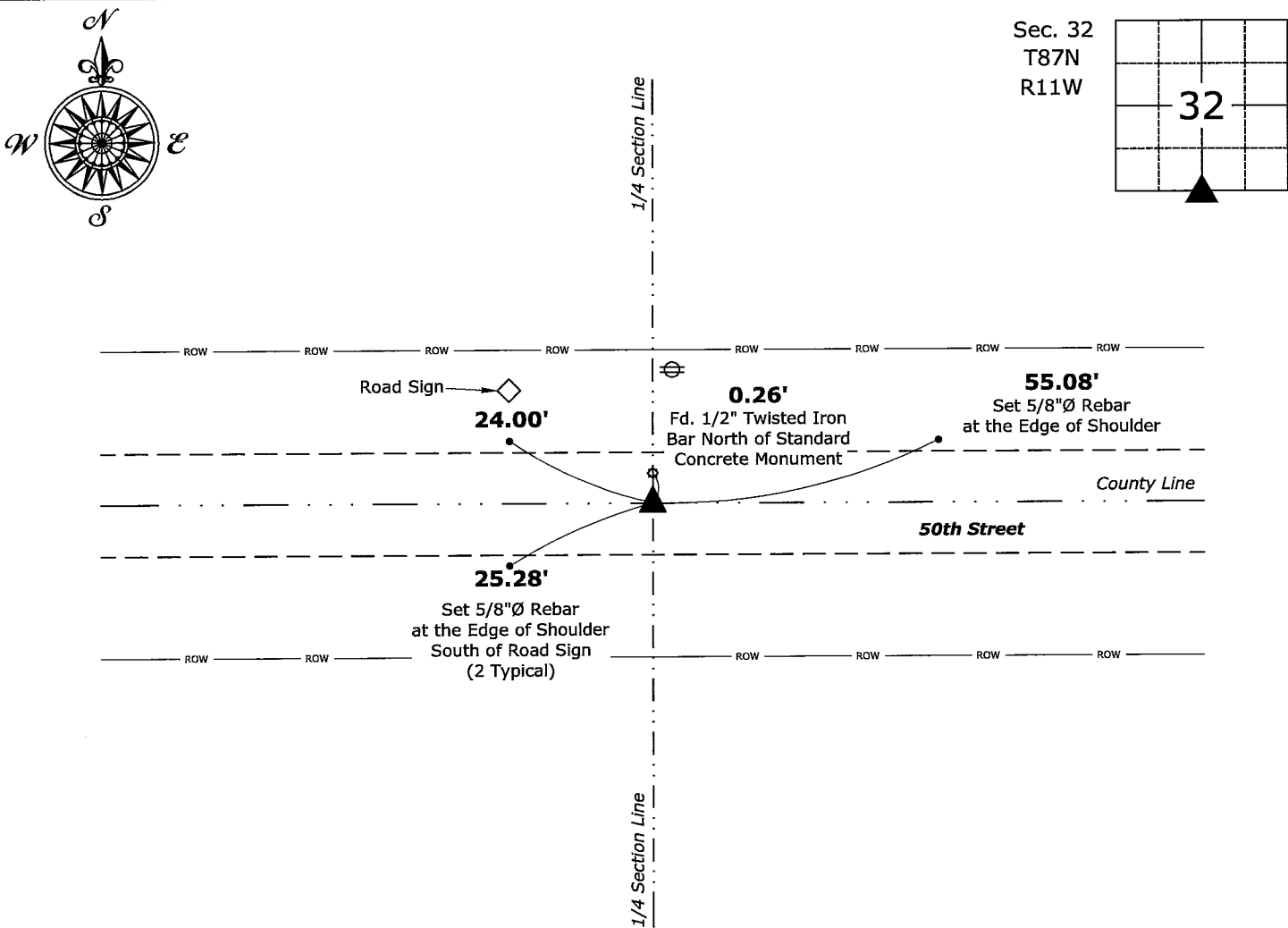
 To clarify description of record monument (ties).

Monument Description and Remarks:

South 1/4 Corner: Found Standard Concrete Monument with information obtained from a Plat of Survey, as recorded in Book 4, Page 47, on file in the Benton County Recorder's Office. Found Monument is flush with the road surface, the top of concrete monument has been damaged by the road maintainer, therefore chiseled the top flat and smooth and then Set 1"Ø Bronze Survey Marker PLS 22468 at the top center of the monument to perpetuate the corner.

Plan View

(Show a minimum of three reference ties to durable physical objects, relevant monuments and physical conditions that will enable recovery of the corner.)



South 1/4 Corner of Section 32-87-11
Found Standard Concrete Monument,
Set 1"Ø Bronze Survey Marker PLS 22468 at the top center



I hereby certify that this land surveying document was prepared and the related survey work was performed by me or under my direct personal supervision and that I am a duly licensed Land Surveyor under the laws of the State of Iowa.

Isaiah M. Reicks
Isaiah M. Reicks Date:

License number 22468
My license renewal date is December 31, 2023.
Sheets covered by this seal: Individual sheet only

List Corner to be Indexed			
Corner	Section	Twp.	Range
S 1/4	32	87	11
Project Number: 2022-581			
FB: Benton 10, Pgs. 25-29			