

SC
MISC
INDEX SW
MARGIN
PROOF
COMPARE

FILED FOR RECORD Nov 9, 2000 AT 010036
4:00 P. M., AND RECORDED IN BOOK 340
OF MISC PAGE 984
RECORDER
FEE 1-5.00/
KESS & ASSOCIATES
723 BROADWAY ST WATERLOO IA 50703

Kirk D. Eschliman, P.L.S. Iowa Lic. No. 9961, 723 Broadway Street, Waterloo, Iowa 50703 - Phone: 319-234-0509

UNITED STATES PUBLIC LAND SURVEY CORNER CERTIFICATE OF

LAND SURVEY MONUMENTS SITUATED IN SECTION THIRTY-TWO (32), TOWNSHIP EIGHTY-SEVEN (87) NORTH
RANGE ELEVEN (11) WEST, OF THE FIFTH PRINCIPAL MERIDIAN, BLACK HAWK COUNTY, IOWA.
PREVIOUSLY RECORDED IN (NOT PREVIOUSLY RECORDED) (BOOK, PAGE, DOCUMENT NUMBER, ETC.) IN THE COUNTY RECORDER'S OFFICE.
(SHOW REASON FOR PREPARING THIS CERTIFICATE, THE EVIDENCE AND DETAILED PROCEDURES USED IN ESTABLISHING THE CORNER POSITIONS AND MONUMENTATION FOUND OR PLACED.)
MONUMENT DESCRIPTION AND REMARKS: FOUND CONCRETE MONUMENT WITH A BRASS CAP WITHOUT MARKINGS,
APPROXIMATELY 12 INCHES DEEP IN A GRAVEL ROAD. A MAGNETIC TRACER HAD BEEN PLACED BELOW THE TOP
OF THE MONUMENT, ON THE NORTH SIDE FOR LOCATION PURPOSES.

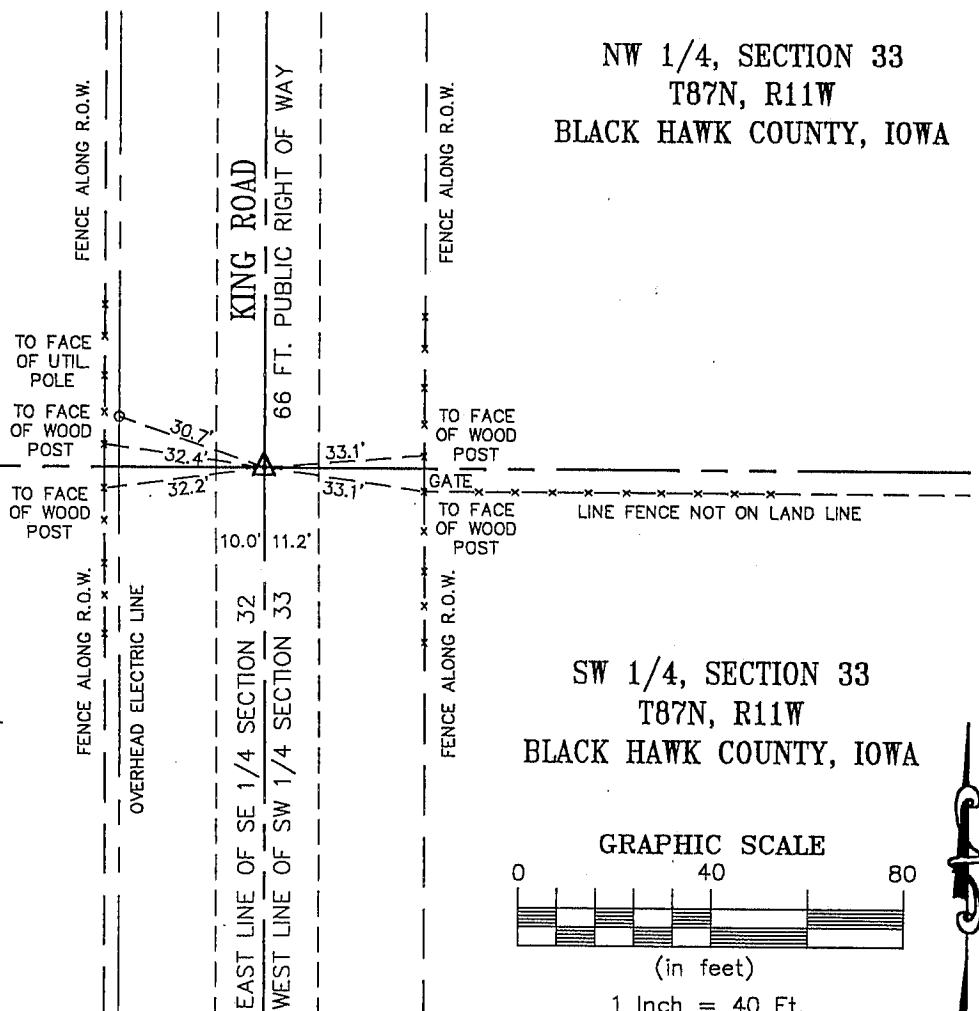
PLAN - VIEW

NE 1/4, SECTION 32
T87N, R11W
BLACK HAWK COUNTY, IOWA

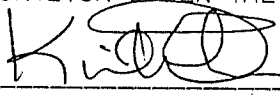
NW 1/4, SECTION 33
T87N, R11W
BLACK HAWK COUNTY, IOWA

SE 1/4, SECTION 32
T87N, R11W
BLACK HAWK COUNTY, IOWA

SW 1/4, SECTION 33
T87N, R11W
BLACK HAWK COUNTY, IOWA



I HEREBY CERTIFY THAT THIS LAND SURVEYING DOCUMENT
WAS PREPARED AND RELATED SURVEY WORK WAS
PERFORMED BY ME OR UNDER MY DIRECT PERSONAL
SUPERVISION AND THAT I AM A DULY LICENSED LAND
SURVEYOR UNDER THE LAWS OF THE STATE OF IOWA.

 DATE: 08/31/00
KIRK D. ESCHLIMAN, P.L.S. IOWA LIC. NO. 9961
MY LICENSE RENEWAL DATE IS DECEMBER 31, 2001
PAGES OR SHEETS COVERED BY THIS SIGNATURE & SEAL: SHEET 1 OF 1

FOR: SCOTT DAVIS (BUYER)
14606 KING ROAD
LA PORTE CITY, IOWA 50651

REQ. BY: PHIL WINTHER (REALTOR)
LA PORTE CITY, IOWA



KESS & ASSOCIATES, INC.
PROFESSIONAL LAND SURVEYORS : 723 BROADWAY, WATERLOO, IOWA 50703-5811
DATE: 08/29/00 C.A.D.D. FILE: 00B27CCA.DWG PROJECT NO.: 00B27

List of corners to be indexed:

Corners	Section	Township	Range
E 1/4	32	T87N	R11W

SECTION 32

