

SC✓
Misc✓
INDEX 98
MARGIN
PROOF
COMPARE

BLACK HAWK COUNTY IOWA: SC
Filed for record Jun 25, 19 97 at 24296
4:00P.M. and recorded in Book 326
of Misc Page 71

Patricia A. Suss Recorder
Fee 1-5.00/

WAYNE CLAASSEN ENGINEERING AND SURVEYING INC

WAYNE CLAASSEN ENGINEERING AND SURVEYING, INC.
P.O. BOX 898 WATERLOO, IOWA 50704-0898

PHONE: (VOICE) 319-235-6294
(FAX) 319-235-0028

UNITED STATES PUBLIC LAND SURVEY CORNER CERTIFICATE

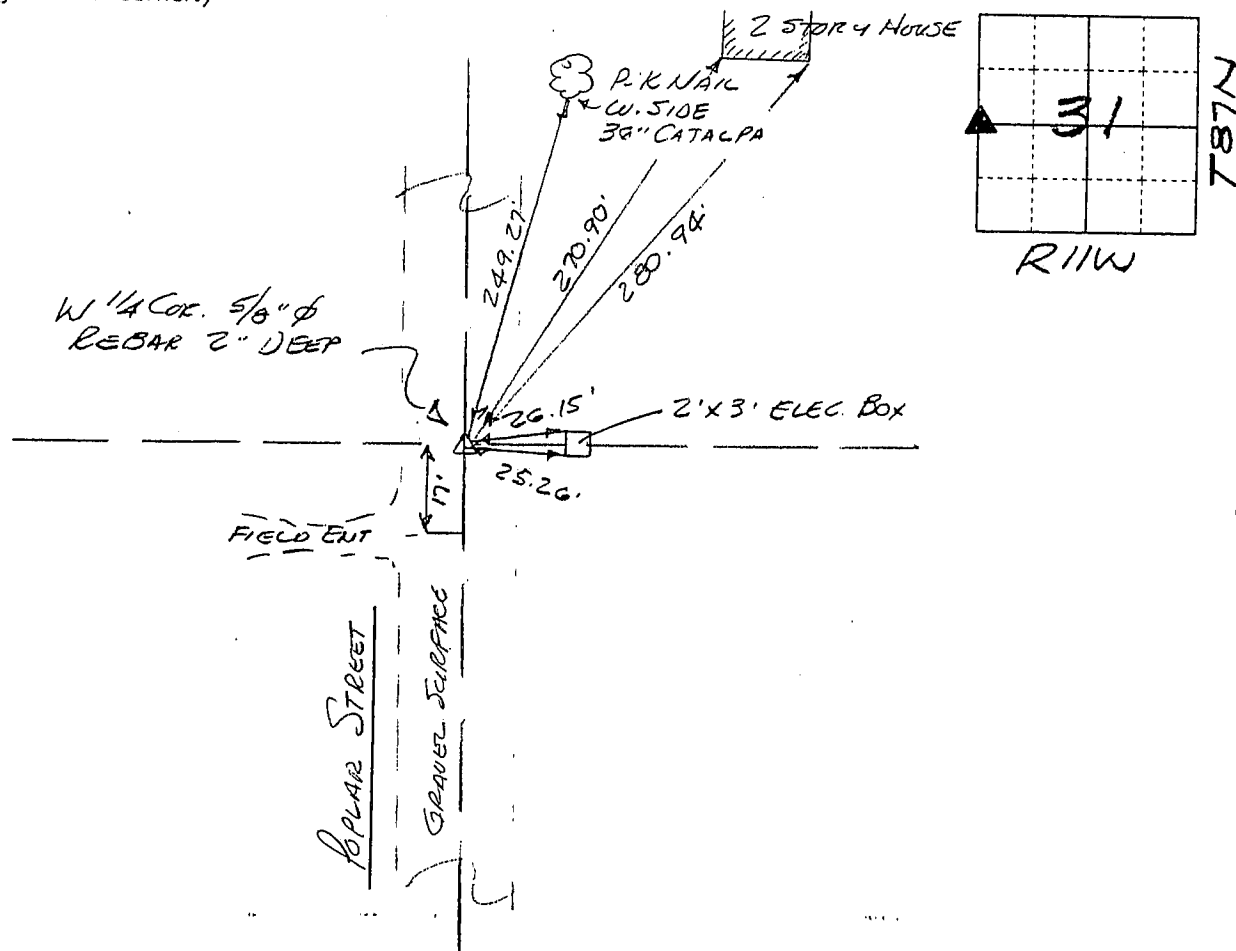
Land Survey Monuments situated in Section 31, Township 87N, Range 11W, of the Fifth Principal Meridian, BLACK HAWK County, Iowa
Previously recorded in N/A in County Recorder's Office
(book, page, document number, etc.)

(Show reason for preparing this certificate, the evidence and detailed procedures used in establishing the corner position and monumentation found or placed.)

Monument Description and Remarks W 1/4 COR. FOUND 5/8" Ø REBAR PER PLAT RECORDED
MISC. 255-84. REFERENCED PIN & DUG 3' X 1" E' HOLE, USED PROD ROD TO
5' DEPTH - HIT NOTHING. RESET PIN AT FOUND LOCATION. CHECKED DIST TO
SEC COR AS RESET FROM CUPA NOTES @ 2630.86' - CUPA DIST = 2630.9'.

PLAN - VIEW

(Show a minimum of three reference ties to durable physical objects, relevant monuments and physical conditions that will enable recovery of the corner.)



477-12

I hereby certify that the survey work was completed and this certificate was prepared by me or under my direct personal supervision and that I am a duly licensed land surveyor under the laws of the state of Iowa.

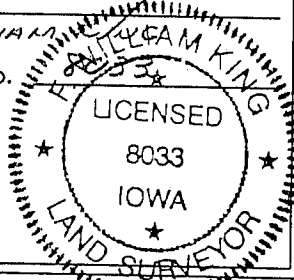
Signature: F. William King

(Name typed or printed:) F. WILLIAM KING

Date: 6-23-1997

Lic. No. 8033

SEAL



List Corners to be Indexed

Corners	Section	Twp	Range
W 1/4	31	87N	11W

BOOK 326 PAGE 071