

JK
POV
Z

Document Number: 2009006365
Date: Sep 23, 2008 4:30:00 pm
Aud Fee: 0.00 Rec Fee: 0.00
Trans Tax: 0.00 Rec Management Fee: 0.00
E-Com Fee: 0.00 Non-Standard Page Fee: 0.00
Filed for record in Black Hawk County, Iowa
Judith A. McCarthy, County Recorder

SHEET #1 OF 2

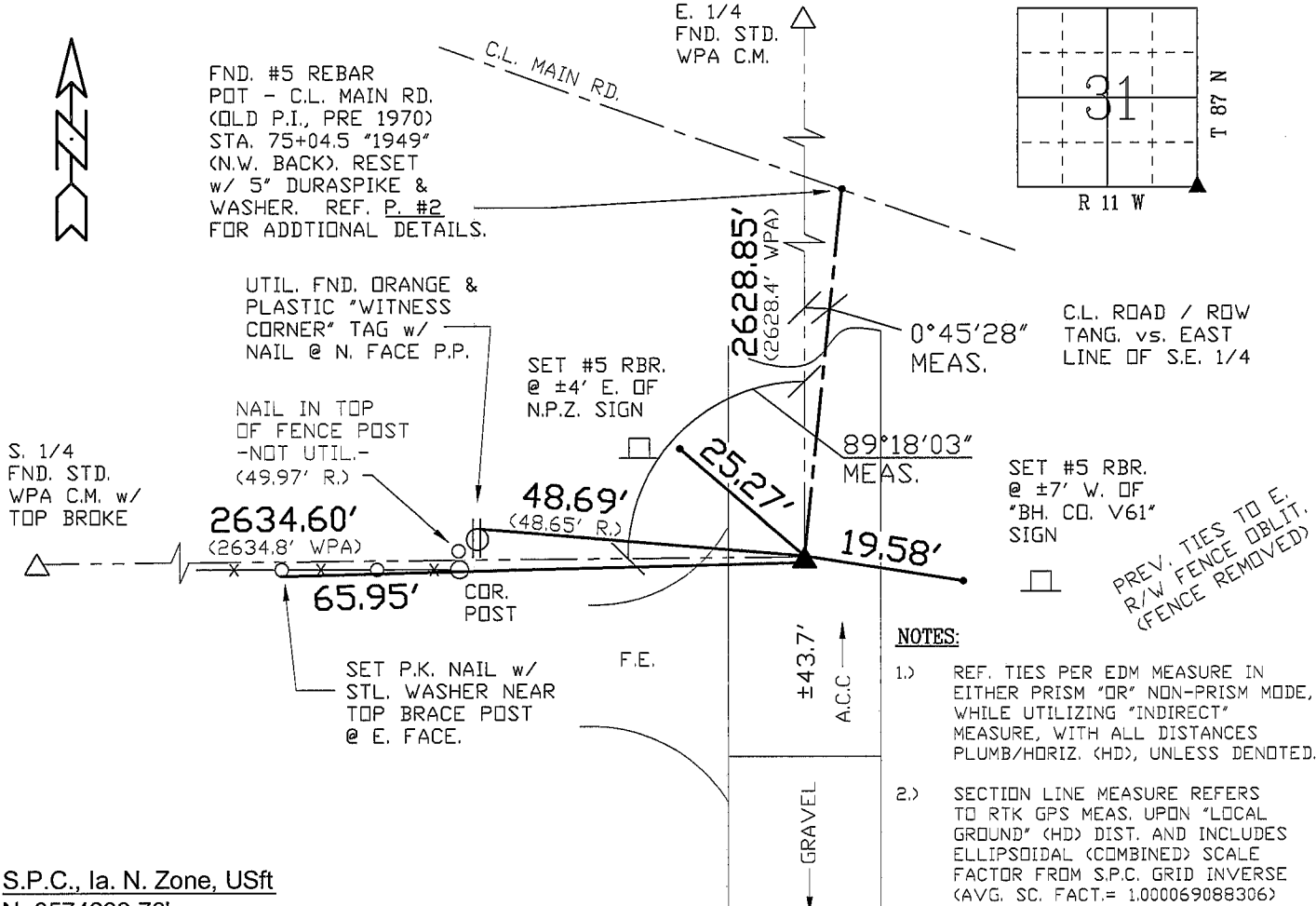
PREPARED BY: BLACK HAWK COUNTY ENGINEERS OFFICE
316 E. FIFTH STREET, ROOM 211 WATERLOO, IOWA 50703
PH.# (319) 291-2419 SLSI 9-94
FAX.# (319) 291-2461 CERT 12-96

UNITED STATES PUBLIC LAND SURVEY CORNER CERTIFICATE OF
Land Survey Monuments situated in Section 31, Township 87 N, Range 11 W, of the Fifth Principal Meridian, BLACK HAWK County, Iowa. Previously recorded in Misc. Book 327, Page 788, in County Recorder's Office.

(Show reason for preparing this certificate, the evidence and detailed procedures used in establishing the corner positions and monumentation found or placed.)
Monument Description and Remarks: FND. SQUARE REBAR IN PCC PVM'T PER CUR. RECORD, PRIOR TO PCC RUBBLIZE / HMA RESURF. PROJECT. TEMP. REF. AND RE-TIED AS DENOTED. RESET ±7'L.x#5 REBAR w/ 2"Ø ALUM. CAP STAMPED "B.H. CO. LAND CORNER", LOC. 0.85' EAST OF C.L. ACC JOINT, AND ±44' N. OF NEW END ACC PAVEMENT. CORNER REFERENCE TO MAIN ROAD GEOM. AND EAST LINE OF S.E. 1/4 ALSO DENOTED AS PART OF THIS RECORD. REFER TO P. #2 FOR ADDITIONAL DETAILS REGARDING GEOM. REFERENCE OF C.L. TANG. ROAD NORTH vs. EAST LINE OF S.E. 1/4 SAID SECTION 31.

PLAN - VIEW

(Show a minimum of three reference ties to durable physical objects, relevant monuments and physical conditions that will enable recovery of the corner.)



S.P.C., Ia. N. Zone, USft
N=3574299.76'
E=5283211.62'
(NAD83-2007 "BHco07", RTK Obs.)

- NOTES:
- 1.) REF. TIES PER EDM MEASURE IN EITHER PRISM "OR" NON-PRISM MODE, WHILE UTILIZING "INDIRECT" MEASURE, WITH ALL DISTANCES PLUMB/HORIZ. (HD), UNLESS DENOTED.
 - 2.) SECTION LINE MEASURE REFERS TO RTK GPS MEAS. UPON "LOCAL GROUND" (HD) DIST. AND INCLUDES ELLIPSOIDAL (COMBINED) SCALE FACTOR FROM S.P.C. GRID INVERSE (AVG. SC. FACT.= 1.000069088306)

FIELD SURVEY: G. TINKER 09/11/08
PREPARED BY: G. TINKER 9/24/08

CERTIFICATION

I hereby certify that this land surveying document was prepared and the related survey work was performed by me or under my direct personal supervision and that I am a duly licensed Land Surveyor under the laws of the State of Iowa.

Geoffry Allen Tinker 9/24/2008
Geoffry Allen Tinker (date)

License Number 15748

My license renewal date is December 31, 2008

Pages or sheets covered by this seal:
pp. 1 & 2 of Land Corner Certificate.

LIST CORNERS TO BE INDEXED

Corner	Section	Township	Range
S.E.	31	87 N	11 W
S.W.	32	87 N	11 W

PREPARED BY: BLACK HAWK COUNTY ENGINEERS OFFICE
316 E. FIFTH STREET, ROOM 211 WATERLOO, IOWA 50703

PH.# (319) 833-3008
FAX.# (319) 833-3139
SLSI 9-94
CERT 12-96

UNITED STATES PUBLIC LAND SURVEY CORNER CERTIFICATE OF
Land Survey Monuments situated in Section 31, Township 87 N,
Range 11 W, of the Fifth Principal Meridian, BLACK HAWK County, Iowa.
Previously recorded in Misc. Book 327, Page 788, in County Recorder's Office.

(Show reason for preparing this certificate, the evidence and detailed procedures used in establishing the corner positions and monumentation found or placed.)

Monument Description and Remarks: (CONT. FROM P. #1, FOR SAID CORNER)
WITH REFERENCE TO S.E. CORNER OF SAID SECTION, PER SHEET #1, THE
FOLLOWING RECORD IS INCLUDED FOR REFERENCE TO MAIN ROAD GEOMETRICS
LOCATED NORTH OF SAID S.E. CORNER:
NOTE THAT TWO PLS RECORD SURVEYS ALONG MAIN RD. (TO DATE) CALL THE
FOUND #5 REBAR IN PCC LOC. 1327.84' (MEAS. vs. 1327.81' R. PLS #6505
AND 1327.69' R. PLS #3862) NORTH OF S.E. CORNER THE "INTERSECTION OF
C.L. MAIN RD. AND E. LINE OF S.E. 1/4". HOWEVER, THIS IS "NOT" TRUE, AND
IS ACTAULLY CONFIRMED PER WPA "RANDOM LINE" CHAINING NOTES ALONG E.
LINE OF S.E. 1/4, AS HEREIN DETAILED. MEAS. DEFL. AT THE E. 1/4 VARIES
BY ±0°01', YET CONFIRMS THE MAIN RD. GEOM. AS RECORD P.I. TO SOUTH (PRE
1970) AND A POINT "NOT" ON THE EAST LINE OF S.E. 1/4 OF SAID SECTION.
REFER TO LAND DEED RECORD BK. 106-p.209 FOR ADDITIONAL SUPPORT.
WHILE WPA MEAS. ALONG S. & E. LINES OF S.E. 1/4 AGREE, WPA REF. TO
SAID "FOUND ROD" CALLS A DIST. OF 13+42.1 FROM S.E. COR. SECT. 31-87-11.
WPA R/L CALC.'S @ 18.2' E. OF SECTIONLINE, WITH RTK MEAS. AS SHOWN @
17.6' E. OF SECTION LINE. TEMP. REF. FND. #5 RBR. IN PCC CORE AS POT
(RECORD P.I. SOUTH) PRIOR TO HMA RESURF. & RE-SET 5"L. DURASPIKE, AS
REFERENCED. ORIG. 1927 GEOM. AND GRADING PLANS CONFIRM P.I. REFERENCE,
IN ADDITION TO 1949 R.O.W. ACQUISITIONS AND 1949 GEOM. GRADING PLANS.
BH. CO. PAVING PROJECT IN 1970 RELOCATED CURVE PERP. INTO MAIN RD.,
WITH P.O.T REFERENCE AS "P.I. FOR GEOM. SOUTH" PRIOR TO 1970.
NO BH. CO. TRANSIT NOTES OR SECTION INFORMATION RECOVERED TO DETAIL
SOURCE OF 1949 GEOM. UPDATES AND R.O.W. ACQUISITION LEGALS.
INFORMATION PROVIDED TO SUMMARIZE GEOM. REF. TO S.E. CORNER OF RECORD.

