

PREPARED BY: BLACK HAWK COUNTY ENGINEERS OFFICE
316 E. FIFTH STREET, ROOM 211 WATERLOO, IOWA 50703PH.# (319) 291-2419
FAX.# (319) 291-2461SLSI 9-84
CERT 12-96

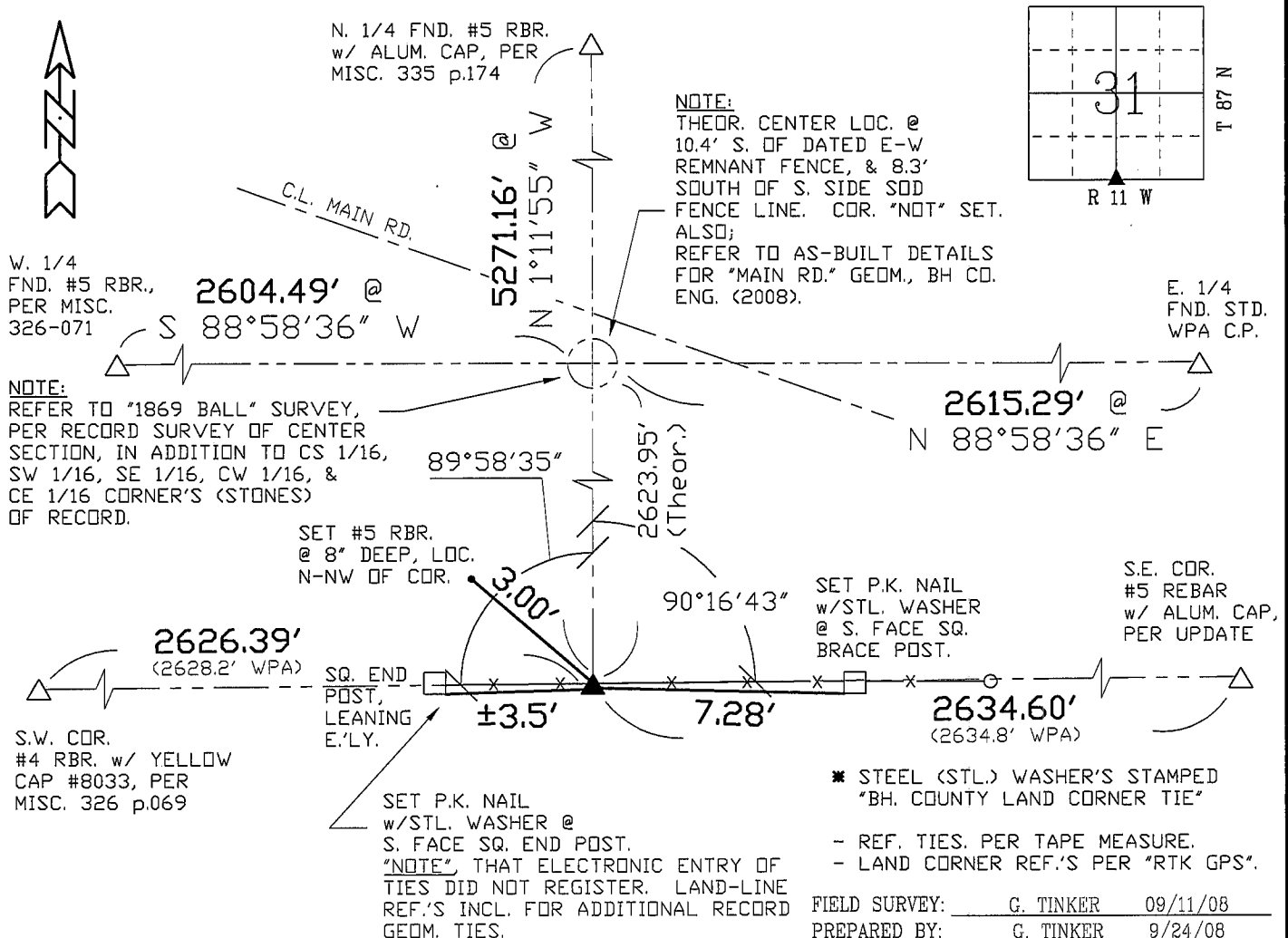
UNITED STATES PUBLIC LAND SURVEY CORNER CERTIFICATE OF
Land Survey Monuments situated in Section 31, Township 87 N,
Range 11 W, of the Fifth Principal Meridian, BLACK HAWK County, Iowa.
Previously recorded in Misc. Book N/A, Page N/A, in County Recorder's Office.

(Show reason for preparing this certificate, the evidence and detailed procedures used in establishing the corner positions and monumentation found or placed.)

Monument Description and Remarks: FND. STD. WPA C.M. 10" DEEP w/TOP BROKE,
PER WPA R/L MEAS. RECORD. CORNER RECOVERED TO REFERENCE S. LINE OF S.E. 1/4,
IN ADDITION TO THEOR. CENTER OF SECTION CALC., AND TO ASSIST WITH REFERENCE OF
"MAIN ROAD" GEOMETRY PRIOR & DURING PCC RUBBILIZE / HMA RESURF. PROJECT.
CORNER FOUND. ALIGNED DIRECTLY UNDER E/W FENCE w/TOP BROKE & MEAS. 4" SQUARE
WITH REFERENCE TO CENTER/SPLIT OF FND. C.M. TIED AND DENOTED LANDLINE GEOM.
FOR RECORD UPDATE AND SECTION 31 RETRACEMENT, PER SAID ROAD PROJECT.
IN ADDITION, SET #5 REBAR ALONG N. SIDE OF FND. C.M., @ ±6" BELOW BROKE SECTION.

PLAN - VIEW

(Show a minimum of three reference ties to durable physical objects, relevant monuments and physical conditions that will enable recovery of the corner.)



CERTIFICATION



I hereby certify that this land surveying document was prepared and the related survey work was performed by me or under my direct personal supervision and that I am a duly licensed Land Surveyor under the laws of the State of Iowa.

Geoffrey Allen Tinker 9/24/2008
(date)

License Number 15748

My license renewal date is December 31, 2008

Pages or sheets covered by this seal:

This Land Corner Certificate Only.

LIST CORNERS TO BE INDEXED

Corner	Section	Township	Range
S. 1/4	31	87 N	11 W