

* Great Plains

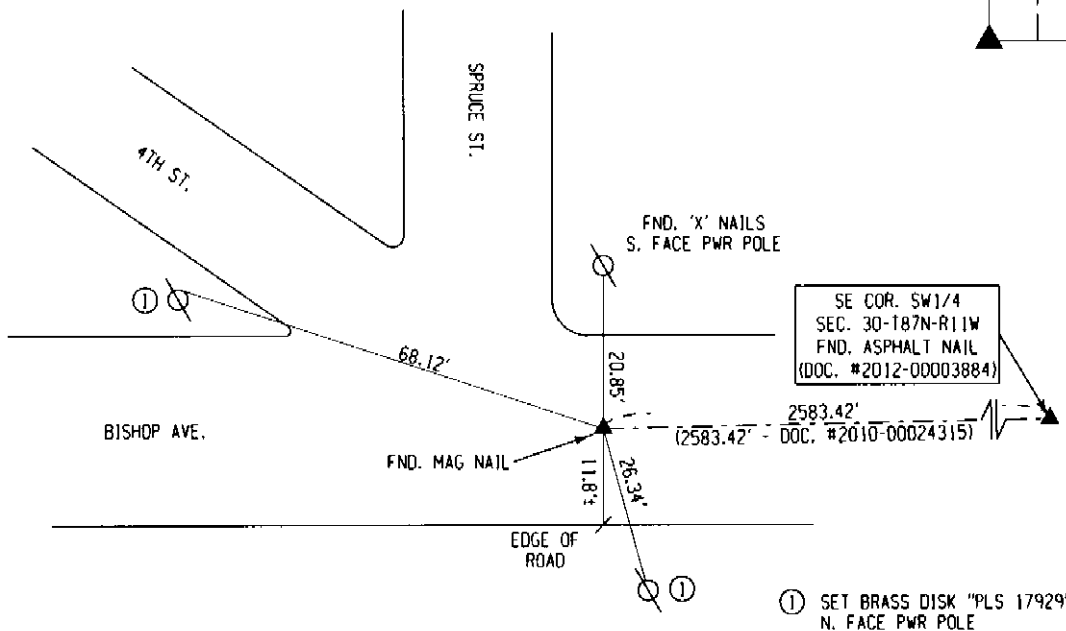
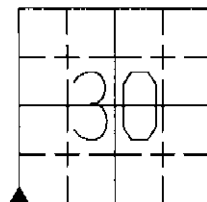
UNITED STATES PUBLIC LAND SURVEY CORNER CERTIFICATE
OF

Land Survey Monuments situated in Section 30 , Township 87N , Range 11W of the Fifth Principal Meridian, BLACK HAWK County, Iowa, previously recorded in N/A (Book, Page, Document Number, etc.) in County Recorder's Office.

Monument Description and Remarks:

COULD NOT FIND SECTION CORNER CERTIFICATE ON FILE WITH THE BLACK HAWK COUNTY RECORDER.
FOUND MAG NAIL DESCRIBED IN PREVIOUSLY RECORDED PLAT DOC. #2010-00024315. ACCEPTED
MONUMENT AS CORNER. FOUND PREVIOUS TIE EVIDENCE, SET NEW TIES AND RE-TIED.

SW CORNER
SECTION 30-T87N-R11W



I hereby certify that this land surveying document was prepared and the related survey work was performed by me or under my direct personal supervision and that I am a duly licensed Land Surveyor under the laws of the State of Iowa.

Jeffrey R. Hutton 6/24/13
JEFFREY R. HUTTON LICENSE NO. 17929 DATE

My license is subject to renewal on December 31, 2013.
This certification applies only to the page upon which it appears.

REASON FOR PREPARING CERTIFICATE:

- ☒ A) THERE IS NO CERTIFICATE FOR THE CORNER ON FILE WITH THE RECORDER OF THE COUNTY IN WHICH THE CORNER IS LOCATED.
- ☐ B) CORNER POSITION DIFFERS FROM THAT SHOWN IN THE PUBLIC RECORDS OF THE COUNTY IN WHICH THE CORNER IS LOCATED.
- ☐ C) THE CORNER MONUMENT HAS BEEN REPLACED OR MODIFIED.
- ☐ D) THE REFERENCE TIES REFERRED TO IN AN EXISTING PUBLIC RECORD ARE INCORRECT.

LEGEND ▲ FOUND SECTION CORNER	SHEET NAME U.S. SECTION CORNER CERTIFICATE		PROJECT NAME WEBB RETRACEMENT SURVEY		GPS 407 SYCAMORE ST. LA PORTE CITY, IA 50651 (319)342-4774 Great Plains Survey, Inc.	
	REVISION DATE	DRAWN BY MJWH	CHECKED BY MJV	APPROVED BY JRH	DATE 06/24/13	SCALE N.T.S.
FIELD BOOK No.					PROJECT No.	
File Number: 2013-00026957					Seq: 1	