

INDEX ¹¹
MARGIN
PROOF
COMPARE

BLACK HAWK COUNTY IOWA:SS 021520
Filed for record FEB 6, 2002 at
4:00 P.M. and recorded in Book _____
of _____ Page _____
Catherine J. Jess Recorder
Fee 1-5.00/
HELLAND ENGINEERING AND SURVEYING

Paul H. Helland, 1107 Technology Parkway, Cedar Falls, Iowa 50613-6951, (319)-266-0161

UNITED STATES PUBLIC LAND SURVEY CORNER CERTIFICATE OF

LAND SURVEY MONUMENTS SITUATED IN SECTION NO. 30, TOWNSHIP NO. 87 NORTH, RANGE
NO. 11 WEST OF THE FIFTH PRINCIPAL MERIDIAN, BLACK HAWK COUNTY, IOWA.

PREVIOUSLY RECORDED IN BOOK _____, PAGE _____.

(SHOW REASON FOR PREPARING THIS CERTIFICATE, THE EVIDENCE AND DETAILED PROCEDURES USED IN ESTABLISHING THE
CORNER POSITIONS AND MONUMENTATION FOUND OR PLACED.)

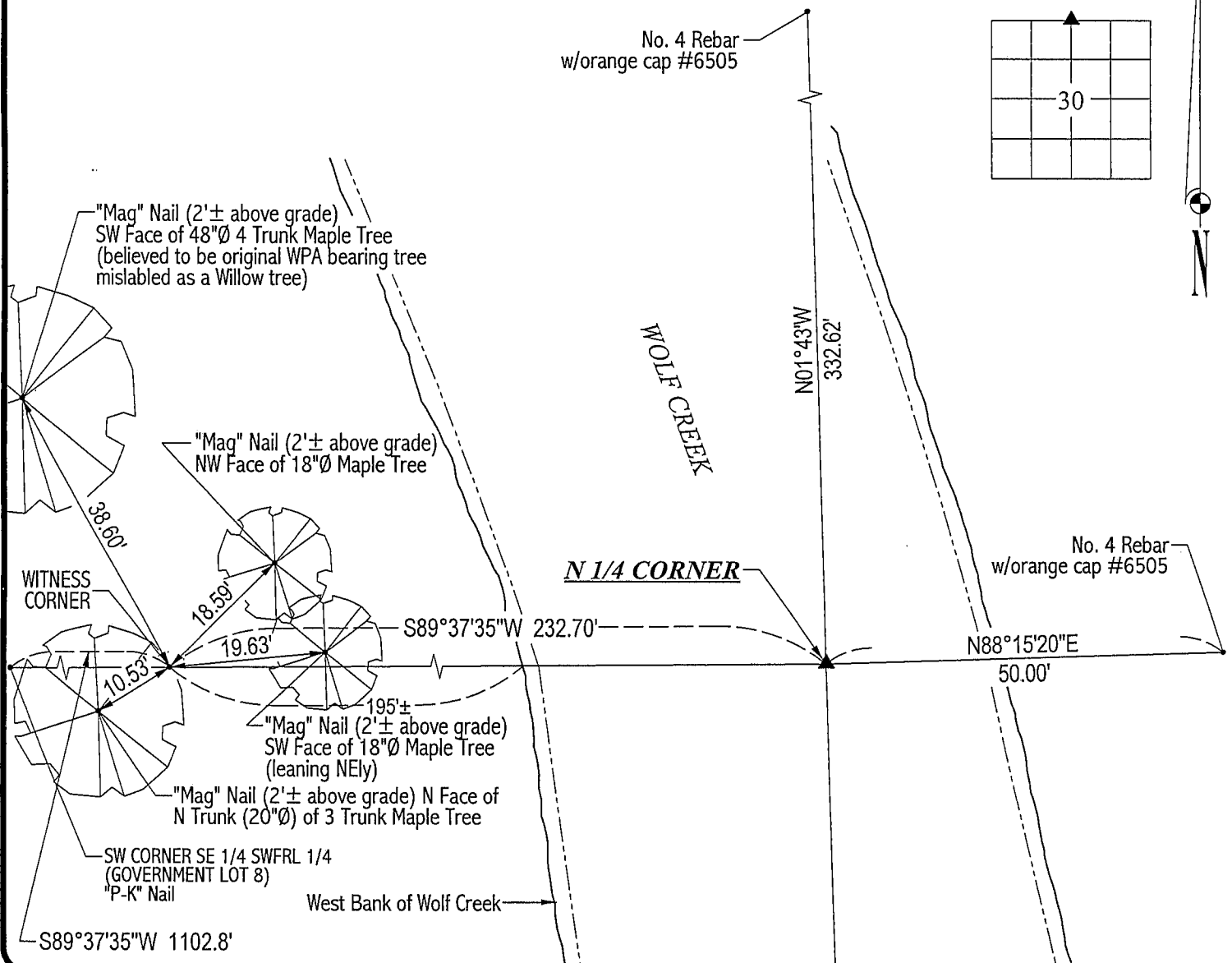
MONUMENT DESCRIPTION AND REMARKS:

SURVEY DONE ON THE NORTH & EAST LINES OF GOVERNMENT LOT 8 SEC. 19-T87N-R11W, NORTH LINE OF NE 1/4 SEC. 30.

N 1/4 CORNER: Corner falls in Wolf Creek. WPA notes dated 8/18/1941 call for a witness corner (concrete monument) set
232.7' West of the N 1/4 Corner. Using the SW Corner of Government Lot 8 ("P-K" nail in A.C.C.) measured over 1103' East and
started excavation. With the help of the Black Hawk County Engineer's Office backhoe, the concrete monument w/brass cap
was found 3.1' deep. Set No. 4 rebar on West side of C.M. flush w/top of same for magnetic detection. Set No. 4 rebar w/orange
cap #6505 above C.M. 0.3' deep.

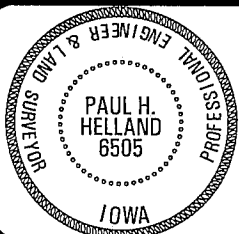
PLAN VIEW

(SHOW A MINIMUM OF THREE REFERENCE TIES TO DURABLE PHYSICAL OBJECTS, RELEVANT MONUMENTS AND PHYSICAL
CONDITIONS THAT WILL ENABLE RECOVERY OF THE CORNER.)



HELLAND ENGINEERING & SURVEYING, LTD.
1107 Technology Parkway
Cedar Falls, Iowa 50613-6951
(319)-266-0161

FILE NAME: 02-111C1.DRG



I hereby certify that this land surveying document was prepared
and the related survey work was performed by me or under my
direct personal supervision and that I am a duly licensed Land
Surveyor under the laws of the State of Iowa.

Paul H. Helland 2/1/02
Paul H. Helland
License Number 6505
My license renewal date is December 31, 2003.
All pages or sheets are covered by this seal except:

LIST CORNERS TO BE INDEXED
CORNER SECTION TOWNSHIP RANGE
N 1/4 CORNER 30 87N 11W