

MISC
INDEX
MARGIN
PROOF
COMPARE

BLACK HAWK COUNTY IOWA:SS
Filed for record MAY 4, 2001 at
4:00 P.M. and recorded in Book 342
of MISC at Page 584
Patricia J. Hess RECORDER
FEE 1-5.00X/.
HELLAND ENGINEERING & SURVEYING LTD

022820

Paul H. Helland, 1107 Technology Parkway, Cedar Falls, Iowa 50613-6951, (319)-266-0161

UNITED STATES PUBLIC LAND SURVEY CORNER CERTIFICATE OF

LAND SURVEY MONUMENTS SITUATED IN SECTION NO. 29, TOWNSHIP NO. 87 NORTH, RANGE
NO. 11 WEST OF THE FIFTH PRINCIPAL MERIDIAN, BLACK HAWK COUNTY, IOWA.
PREVIOUSLY RECORDED IN BOOK _____, PAGE _____.

(SHOW REASON FOR PREPARING THIS CERTIFICATE, THE EVIDENCE AND DETAILED PROCEDURES USED IN ESTABLISHING THE
CORNER POSITIONS AND MONUMENTATION FOUND OR PLACED.)

MONUMENT DESCRIPTION AND REMARKS:

SURVEY DONE IN NE 1/4 SE 1/4 OF SEC. 29-T87N-R11W.

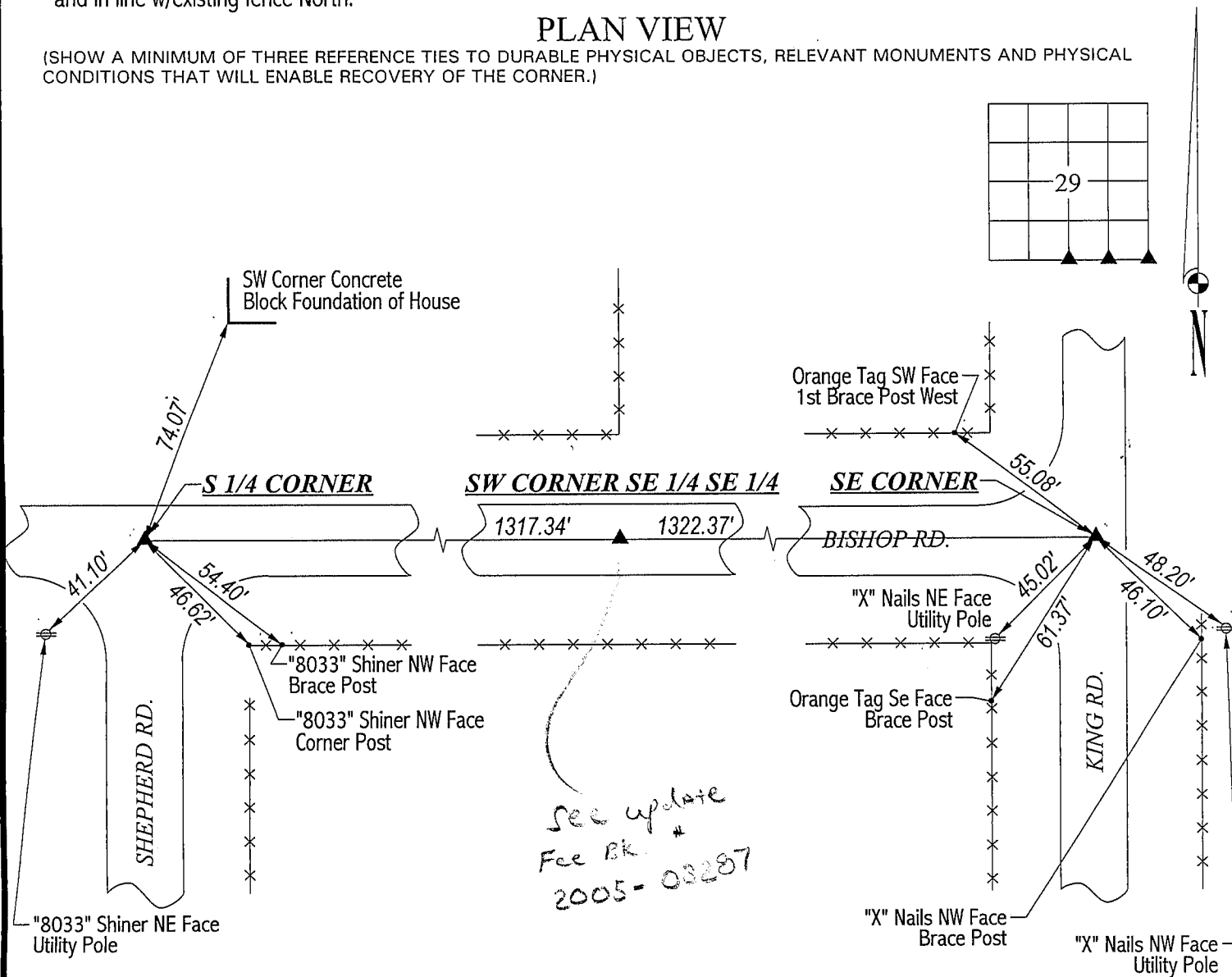
S 1/4 CORNER: Found No. 5 rebar w/aluminum cap labeled "Black Hawk County" 0.2' deep.

SE CORNER: Found pinched pipe 0.8' deep.

SW CORNER SE 1/4 SE 1/4: Set Mag nail in seal-coated road surface on line between the S 1/4 Corner & the SE Corner
and in line w/existing fence North.

PLAN VIEW

(SHOW A MINIMUM OF THREE REFERENCE TIES TO DURABLE PHYSICAL OBJECTS, RELEVANT MONUMENTS AND PHYSICAL
CONDITIONS THAT WILL ENABLE RECOVERY OF THE CORNER.)



HELLAND ENGINEERING & SURVEYING, LTD.
1107 Technology Parkway
Cedar Falls, Iowa 50613-6951
(319)-266-0161

FILE NAME: 00-351C1.DRG



I hereby certify that this land surveying document was prepared
and the related survey work was performed by me or under my
direct personal supervision and that I am a duly licensed Land
Surveyor under the laws of the State of Iowa.

Paul H. Helland 4/6/01
Paul H. Helland
License Number 6505
My license renewal date is December 31, 2001.
All pages or sheets are covered by this seal except:

LIST CORNERS TO BE INDEXED			
CORNER	SECTION	TOWNSHIP	RANGE
S 1/4 CORNER	29	87N	11W
SE CORNER	29	87N	11W
SW CORNER	29	87N	11W
SE 1/4 SE 1/4			