

Doc ID: 005055520001 Type: GEN  
Kind: CORNER  
Recorded: 02/05/2013 at 11:13:24 AM  
Fee Amt: \$7.00 Page 1 of 1  
Black Hawk County Iowa  
JUDITH A MCCARTHY RECORDER  
File **2013-00016389**

Paul H. Helland, 1107 Technology Parkway, Cedar Falls, Iowa 50613-6951, (319)-266-0161

UNITED STATES PUBLIC LAND SURVEY CORNER CERTIFICATE  
OF

LAND SURVEY MONUMENTS SITUATED IN SECTION NO. 29, TOWNSHIP NO. 87 NORTH, RANGE  
NO. 11 WEST OF THE FIFTH PRINCIPAL MERIDIAN, BLACK HAWK COUNTY, IOWA.  
PREVIOUSLY RECORDED IN 335 MISC. 452

(SHOW REASON FOR PREPARING THIS CERTIFICATE, THE EVIDENCE AND DETAILED PROCEDURES USED IN ESTABLISHING THE  
CORNER POSITIONS AND MONUMENTATION FOUND OR PLACED.)

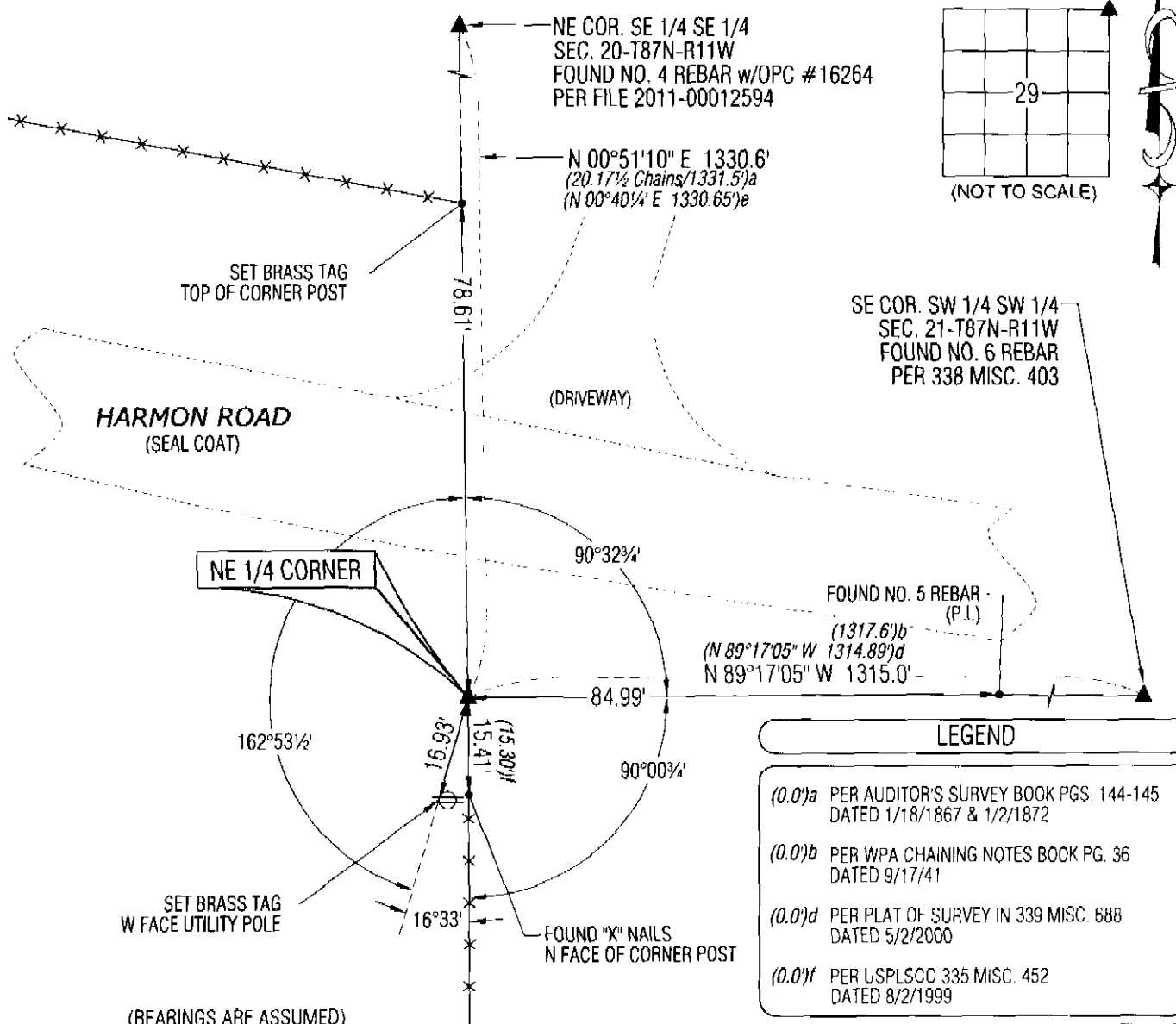
MONUMENT DESCRIPTION AND REMARKS:

ONLY ONE REFERENCE TIE REMAINS. SURVEY COMPLETED IN THE SW 1/4 OF SEC. 21-T87N-R11W.

**NE CORNER:** USPLSCC 335 MISC. 452 DATED CALLS FOR [FOUND PINCHED PIPE 0.6' DEEP IN ROAD DITCH.]. FOUND 1"  
o.d. PINCHED PIPE PER SAID USPLSCC.

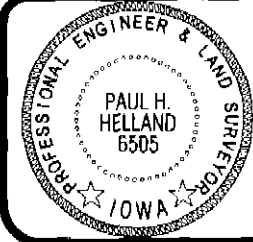
PLAN VIEW

(SHOW A MINIMUM OF THREE REFERENCE TIES TO DURABLE PHYSICAL OBJECTS, RELEVANT MONUMENTS AND PHYSICAL  
CONDITIONS THAT WILL ENABLE RECOVERY OF THE CORNER.)



**HES** HELLAND ENGINEERING & SURVEYING, LTD.  
1107 Technology Parkway  
Cedar Falls, Iowa 50613-6951  
(319)-266-0161

SHINER = 8D NAIL & 1 5/16"Ø METAL SHINER  
BRASS TAG = 8D NAIL & 13/16"Ø BRASS TAG  
OPC = PLASTIC CAP (O=ORANGE, R=RED, Y=YELLOW)  
(00') RECORDED AS FILE NAME: 13-102-25.DWG



I hereby certify that this land surveying document was prepared  
and the related survey work was performed by me or under my  
direct personal supervision and that I am a duly licensed Land  
Surveyor under the laws of the State of Iowa.  
Paul H. Helland  
License Number 6505  
My license renewal date is December 31, 2013.  
All pages or sheets are covered by this seal except:

LIST CORNERS TO BE INDEXED			
CORNER	SECTION	TOWNSHIP	RANGE
NE CORNER	29	87N	11W
SE CORNER	20	87N	11W
SW CORNER	21	87N	11W
NW CORNER	28	87N	11W

File Number: 2013-00016389 Seq: 1