

INDEX 18
MARGIN
PROOF
COMPARE

BLACK HAWK COUNTY IOWA:SS 021519
Filed for record FEB 6, 2002 at
4:00 P.M. and recorded in Book _____
of _____ Page _____
of Patricia J. Lass Recorder
Fee 1-5.00/
HELLAND ENGINEERING & SURVEYING

Paul H. Helland, 1107 Technology Parkway, Cedar Falls, Iowa 50613-6951, (319)-266-0161

UNITED STATES PUBLIC LAND SURVEY CORNER CERTIFICATE
OF

LAND SURVEY MONUMENTS SITUATED IN SECTION NO. 29, TOWNSHIP NO. 87 NORTH, RANGE
NO. 11 WEST OF THE FIFTH PRINCIPAL MERIDIAN, BLACK HAWK COUNTY, IOWA.
PREVIOUSLY RECORDED IN BOOK _____, PAGE _____.

(SHOW REASON FOR PREPARING THIS CERTIFICATE, THE EVIDENCE AND DETAILED PROCEDURES USED IN ESTABLISHING THE
CORNER POSITIONS AND MONUMENTATION FOUND OR PLACED.)

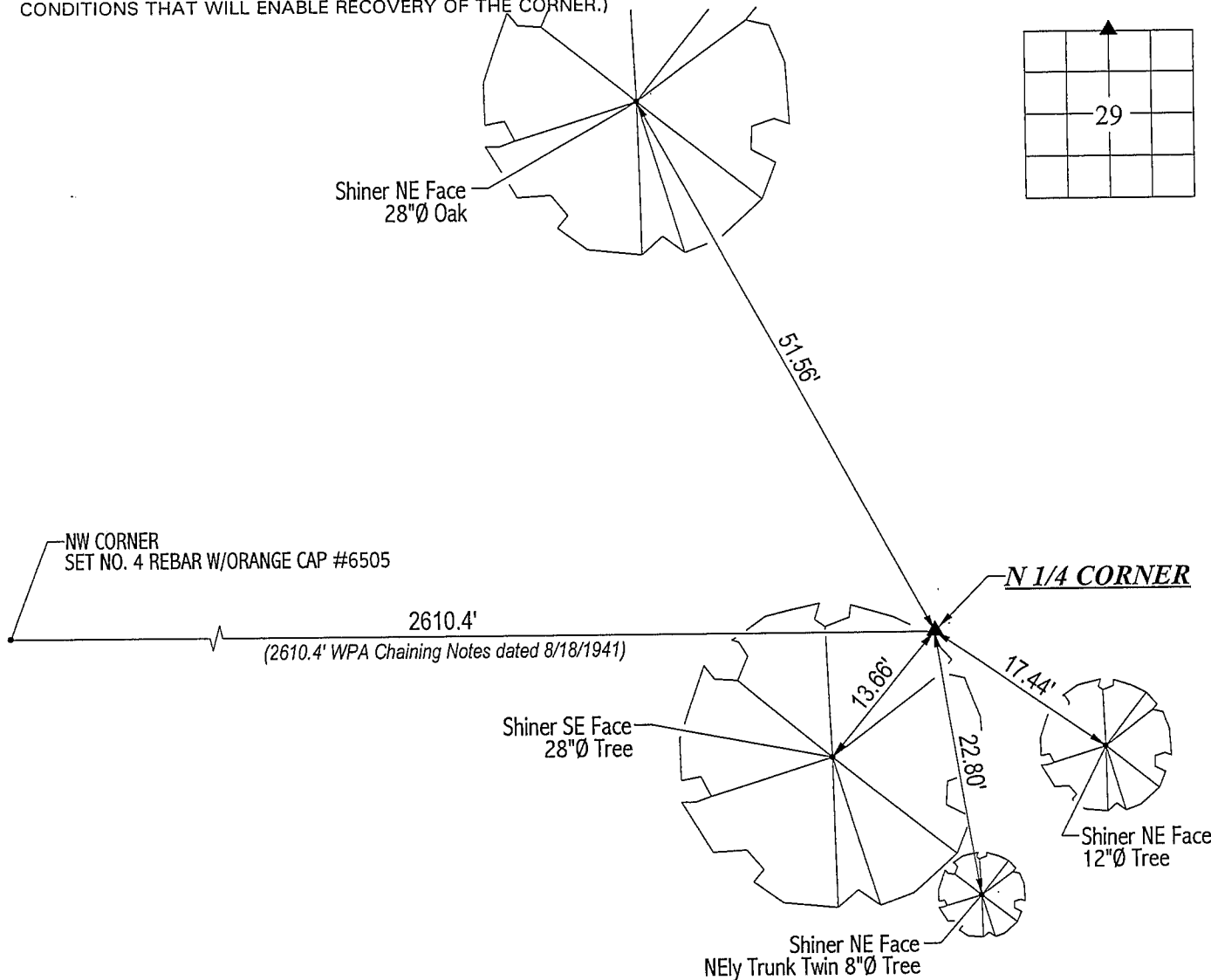
MONUMENT DESCRIPTION AND REMARKS:

SURVEY DONE ON THE NORTH & EAST LINES OF GOVERNMENT LOT 8 SEC. 19-T87N-R11W, NORTH LINE OF NE 1/4 SEC. 30.

N 1/4 CORNER: Black Hawk County Engineer reference ties call for a concrete monument found by Claasen Engineering
& Surveying in 1979. Found apparent bearing trees ("X" nails overgrown), crossed ties and started excavation. Found
concrete monument w/brass cap 1.3' deep. Set No. 4 rebar on North side of C.M. 0.3' above top of said C.M. for magnetic
detection.

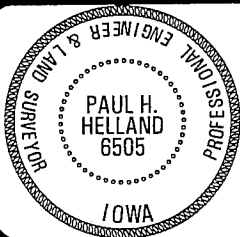
PLAN VIEW

(SHOW A MINIMUM OF THREE REFERENCE TIES TO DURABLE PHYSICAL OBJECTS, RELEVANT MONUMENTS AND PHYSICAL
CONDITIONS THAT WILL ENABLE RECOVERY OF THE CORNER.)



HELLAND ENGINEERING & SURVEYING, LTD.
1107 Technology Parkway
Cedar Falls, Iowa 50613-6951
(319)-266-0161

FILE NAME: 02-111C2.DRG



I hereby certify that this land surveying document was prepared
and the related survey work was performed by me or under my
direct personal supervision and that I am a duly licensed Land
Surveyor under the laws of the State of Iowa.

Paul H. Helland
License Number 6505
My license renewal date is December 31, 2003.
All pages or sheets are covered by this seal except:

LIST CORNERS TO BE INDEXED
CORNER SECTION TOWNSHIP RANGE
N 1/4 CORNER 29 87N 11W