

SC
MISC
INDEX *SF*
MARGIN
PROOF
COMPARE

BLACK HAWK COUNTY IOWA:SS 022821
Filed for record MAY 4, 2001 at
4:00 P.M. and recorded in Book 342
of MISC at Page 585
Patricia L. Lass RECORDER
FEE 1-5.00X/.
HELLAND ENGINEERING & SURVEYING LTD

Paul H. Helland, 1107 Technology Parkway, Cedar Falls, Iowa 50613-6951, (319)-266-0161

UNITED STATES PUBLIC LAND SURVEY CORNER CERTIFICATE OF

LAND SURVEY MONUMENTS SITUATED IN SECTION NO. 29, TOWNSHIP NO. 87 NORTH, RANGE
NO. 11 WEST OF THE FIFTH PRINCIPAL MERIDIAN, BLACK HAWK COUNTY, IOWA.
PREVIOUSLY RECORDED IN BOOK _____, PAGE _____.

(SHOW REASON FOR PREPARING THIS CERTIFICATE, THE EVIDENCE AND DETAILED PROCEDURES USED IN ESTABLISHING THE
CORNER POSITIONS AND MONUMENTATION FOUND OR PLACED.)

MONUMENT DESCRIPTION AND REMARKS:

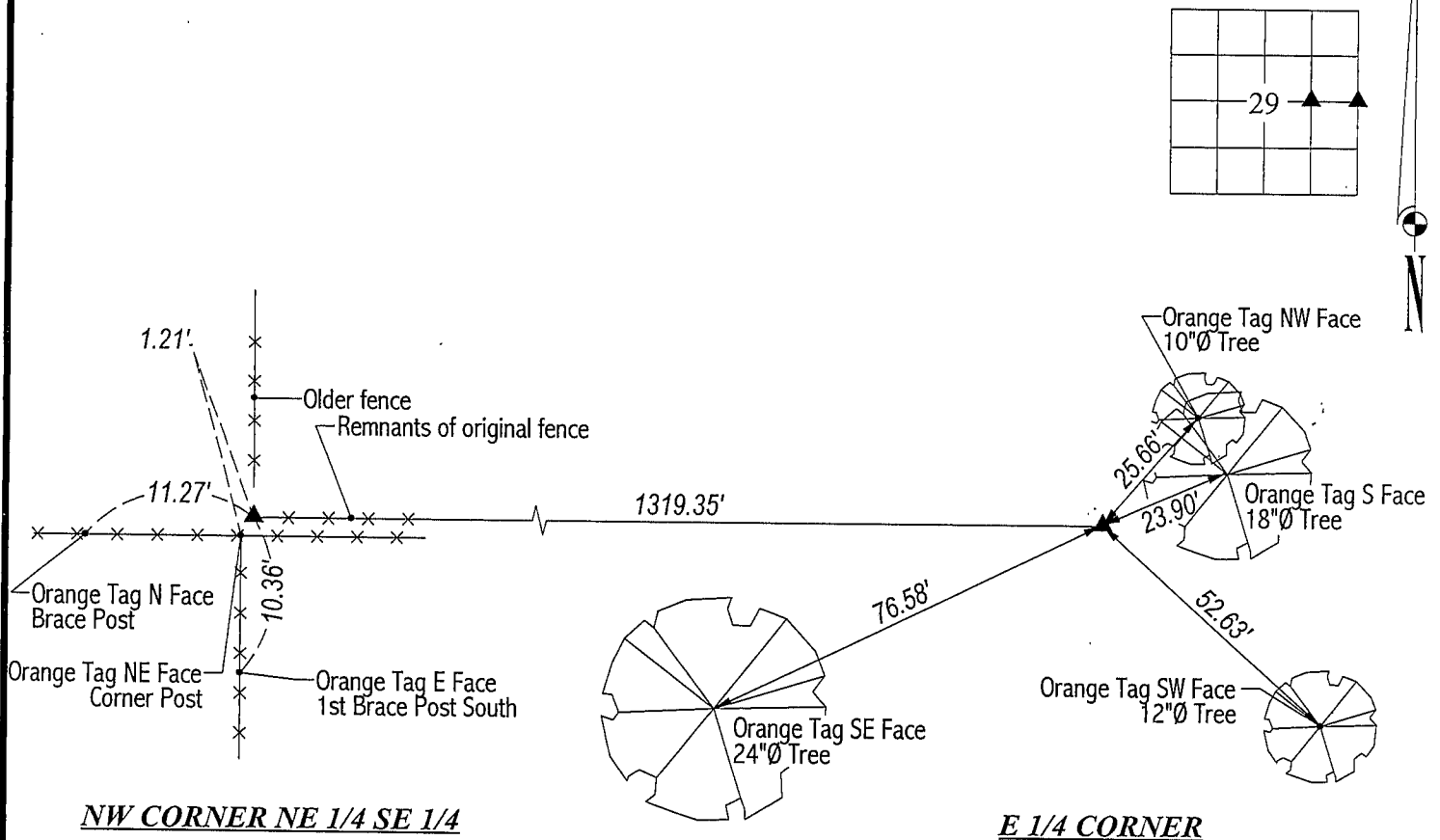
SURVEY DONE IN NE 1/4 SE 1/4 OF SEC. 29-T87N-R11W.

E 1/4 CORNER: A Plat of Survey (unrecorded) by Robert Schenk in 1958 shows he found a broken off concrete monument 1321.0'
East of a corner post at the Northwest corner of the NE 1/4 SE 1/4. Youngerman chaining notes dated 9-26-1941 show a distance
of 1312.75' from said corner post. After digging 4'x15' trench 3' deep in old pond bed, found broken off concrete monument
0.5' deep. Cut "X" on top of monument and set No. 4 rebars on the North & South side thereof for magnetic detection.

NW CORNER NE 1/4 SE 1/4: A Plat of Survey (unrecorded) by Robert Schenk in 1958 shows he found a corner post.
Youngerman chaining notes dated 9-26-1941 also show a corner post. Found decayed remnants of said corner post.
Set No. 4 rebar w/orange cap #6505.

PLAN VIEW

(SHOW A MINIMUM OF THREE REFERENCE TIES TO DURABLE PHYSICAL OBJECTS, RELEVANT MONUMENTS AND PHYSICAL
CONDITIONS THAT WILL ENABLE RECOVERY OF THE CORNER.)



HELLAND ENGINEERING & SURVEYING, LTD.
1107 Technology Parkway
Cedar Falls, Iowa 50613-6951
(319)-266-0161

FILE NAME: 00-351C2.DRG



I hereby certify that this land surveying document was prepared
and the related survey work was performed by me or under my
direct personal supervision and that I am a duly licensed Land
Surveyor under the laws of the State of Iowa.

Paul H. Helland 4/5/01
Paul H. Helland
License Number 6505
My license renewal date is December 31, 2001.
All pages or sheets are covered by this seal except:

LIST CORNERS TO BE INDEXED			
CORNER	SECTION	TOWNSHIP	RANGE
E 1/4 CORNER	29	87N	11W
NW CORNER NE 1/4 SE 1/4	29	87N	11W