

BOOK -
12-20-95

WAYNE CLAASSEN ENGINEERING AND SURVEYING, INC.
P.O. BOX 898 WATERLOO, IOWA 50704-0898

PHONE: (VOICE) 319-235-6294
(FAX) 319-235-0028

UNITED STATES PUBLIC LAND SURVEY CORNER CERTIFICATE

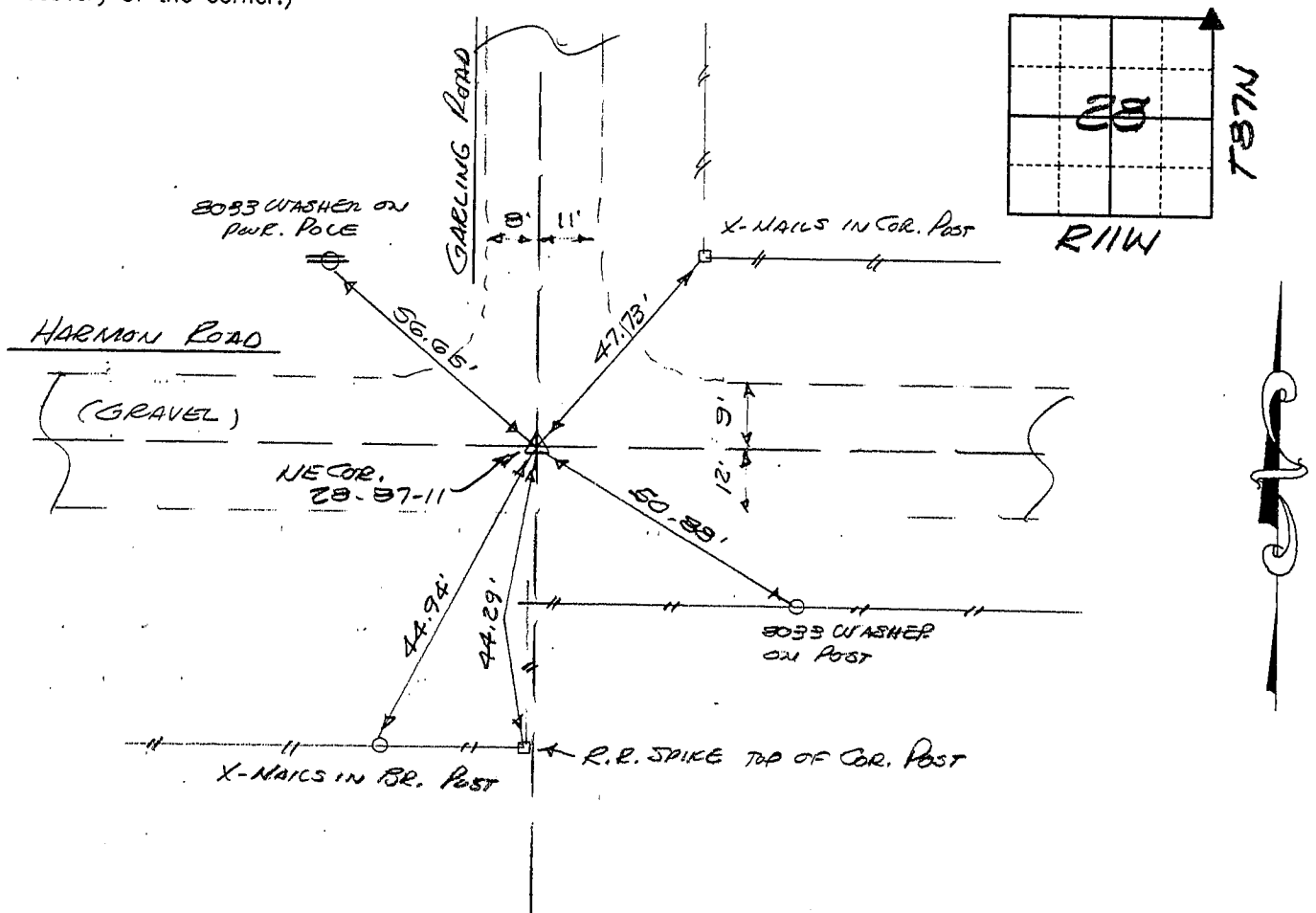
Land Survey Monuments situated in Section 28, Township 87N, Range 11W, of the Fifth Principal Meridian, BLACK HAWK County, Iowa.
Previously recorded in N/A in County Recorder's Office.
(book, page, document number, etc.)

(Show reason for preparing this certificate, the evidence and detailed procedures used in establishing the corner positions and monumentation found or placed.)

Monument Description and Remarks FOUND 3/4" IRON PIN 12" DEEP USING CES TIES OF 1982 WHEN THIS PIN WAS FOUND ALSO. SET 1/2" REBAR OVER PIN @ 2" DEEP IN GRAVEL

PLAN - VIEW

(Show a minimum of three reference ties to durable physical objects, relevant monuments and physical conditions that will enable recovery of the corner.)



337-78

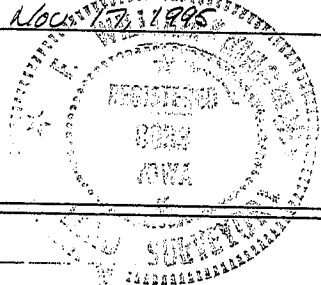
I hereby certify that the survey work was completed and this certificate was prepared by me or under my direct personal supervision and that I am a duly registered land surveyor under the laws of the state of Iowa.

Signature:

F. William King
(Name typed or printed:) F. WILLIAM KING

Date: Nov 13 1995 Reg. No. 8033

SEAL



List Corners to be Indexed

Corners	Section	Twp	Range
<u>NE</u>	<u>28</u>	<u>87N</u>	<u>11W</u>

MISC. BK 318 p. 633