

PAUL HELLAND

Jeffrey P. Helland, 1107 Technology Parkway, Cedar Falls, Iowa 50613-6951, (319)-266-0161

## UNITED STATES PUBLIC LAND SURVEY CORNER CERTIFICATE OF

LAND SURVEY MONUMENTS SITUATED IN SECTION NO. 28, TOWNSHIP NO. 87 NORTH, RANGE  
NO. 11 WEST OF THE FIFTH PRINCIPAL MERIDIAN, BLACK HAWK COUNTY, IOWA.  
PREVIOUSLY RECORDED IN BOOK 318, PAGE 635.

(SHOW REASON FOR PREPARING THIS CERTIFICATE, THE EVIDENCE AND DETAILED PROCEDURES USED IN ESTABLISHING THE  
CORNER POSITIONS AND MONUMENTATION FOUND OR PLACED.)

### MONUMENT DESCRIPTION AND REMARKS:

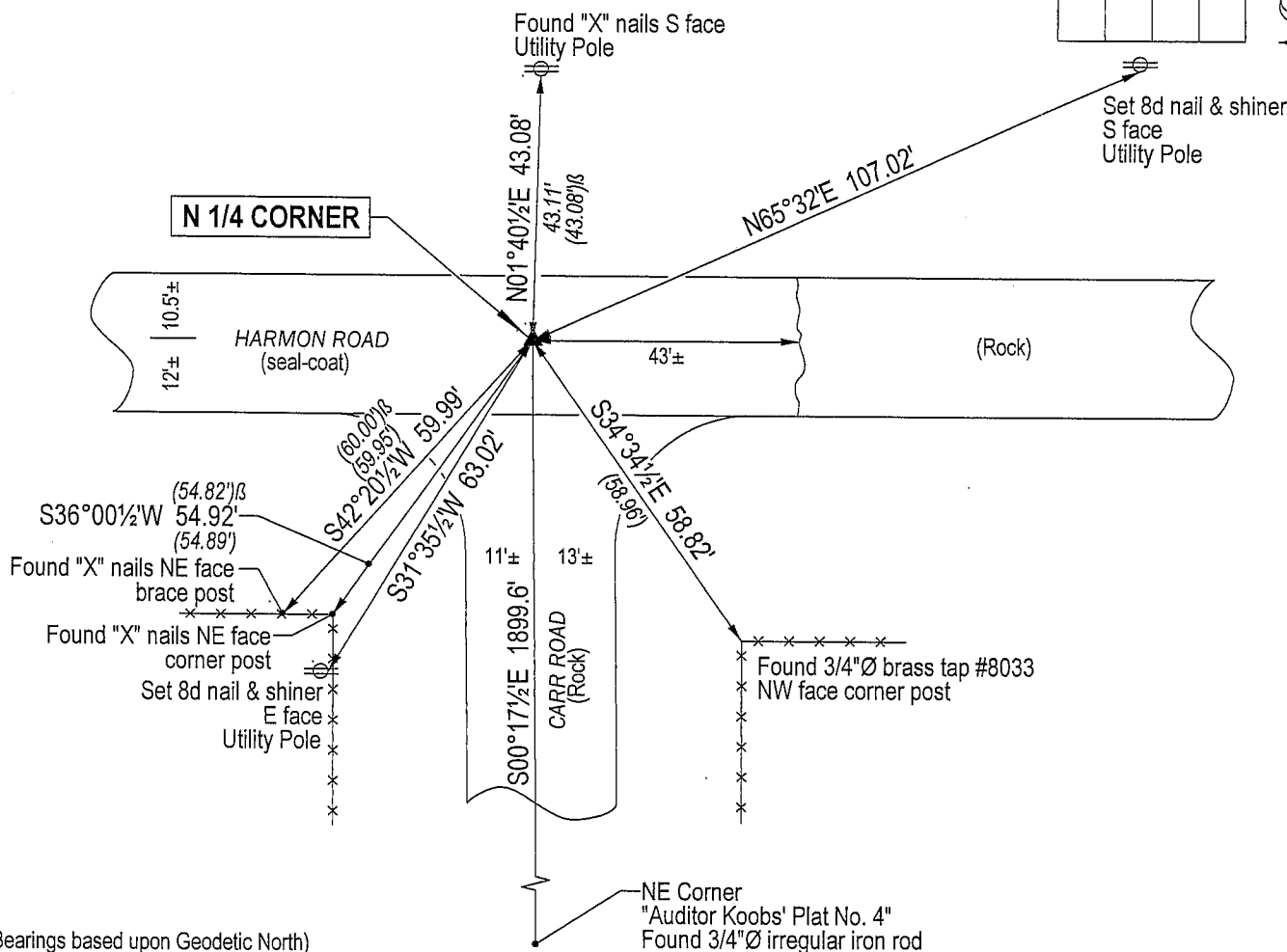
Monumentation has changed from 318 Misc. 635. Survey completed in the NE 1/4 of Sec. 28-T87N-R11W.

N 1/4 CORNER: 318 Misc. 635 calls for (found "P-K" nail in oiled surface, all ties matched CES ties of 1980 when 3/4" pin was found at this location 4" deep). Black Hawk County Engineer reference ties (no date) call for (fnd 3/4" iron pin). Found said "P-K" nail 0.05' below seal-coated road surface, but its position was questionable. Continued excavation and found called for No. 6 rebar inside 1" iron pipe w/remnants of orange flagging. Probed below said No. 6 rebar and hit concrete monument at a depth of 2.0'. Said No. 6 rebar is 0.45' deep. Said "P-K" nail was removed, its position was 0.3'± West and 0.05' North of said No. 6 rebar.

### PLAN VIEW

(SHOW A MINIMUM OF THREE REFERENCE TIES TO DURABLE PHYSICAL OBJECTS, RELEVANT MONUMENTS AND PHYSICAL  
CONDITIONS THAT WILL ENABLE RECOVERY OF THE CORNER.)

SE Corner of Lot 7, "Auditor Koobs' Plat No. 4", Found No. 6 rebar per 318 Misc. 637  
is S00°17'10"E 2601.2' from the N 1/4 Corner of Sec. 28-T87N-R11W, said corner is  
recorded as being 17.5' North of the Center of Sec. 28-T87N-R11W.



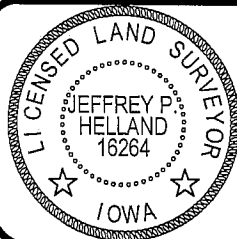
(Bearings based upon Geodetic North)



**HELLAND ENGINEERING & SURVEYING, LTD.**  
1107 Technology Parkway  
Cedar Falls, Iowa 50613-6951  
(319)-266-0161

(00.00')β - Per Black Hawk County Engineer ties (no date)

(00.00') - Recorded As File Name: 04-294c1.drg



I hereby certify that this land surveying document was prepared  
and the related survey work was performed by me or under my  
direct personal supervision and that I am a duly licensed Land  
Surveyor under the laws of the State of Iowa.

*Jeffrey P. Helland* 9/1/04  
Jeffrey P. Helland  
License Number 16264  
My license renewal date is December 31, 2005.  
All pages or sheets are covered by this seal except:

LIST CORNERS TO BE INDEXED			
CORNER	SECTION	TOWNSHIP	RANGE
N 1/4 CORNER	28	87N	11W