


PROOF  FILED FOR RECORD OCT 3, 2005, AT 2:00 P.M. FEE N/CCOMPARED  BLACK HAWK COUNTY RECORDER

BLACK HAWK COUNTY ENGINEER

PREPARED BY: BLACK HAWK COUNTY ENGINEERS OFFICE  
316 E. FIFTH STREET, ROOM 211 WATERLOO, IOWA 50703PH.# (319) 833-3008  
FAX.# (319) 833-3139SLSI 9-94  
CERT 12-96

UNITED STATES PUBLIC LAND SURVEY CORNER CERTIFICATE OF  
Land Survey Monuments situated in Section 27, Township 87 N,  
Range 11 W, of the Fifth Principal Meridian, BLACK HAWK County, Iowa.  
Previously recorded in Misc. Book n/a, Page n/a, in County Recorder's Office.

(Show reason for preparing this certificate, the evidence and detailed procedures used in establishing the corner positions and monumentation found or placed.)

Monument Description and Remarks: FOUND 40d NAIL w/ RIBBON & TEMP.  
REFERENCED TO FOUND 1-1/4" PINCHED PIPE @ 0.5' DEEP & DISCARDED NAIL.  
CORNER RECOVERED TO ASSIST w/ PROPORTION FOR RECOVERY OF N. 1/4  
CORNER SAID SECTION. RECORD CO. ENG. TIES STATE AS "FND. 1/2" SQ. ROD  
@ S.E. COR. LIMESTONE 48" DEEP & SET 3/4" IRON PIN 6" DEEP" (9-7-79).  
CORNER FILED TO UPDATE PUBLIC RECORD, w/ NO COR. CERT. ON FILE.

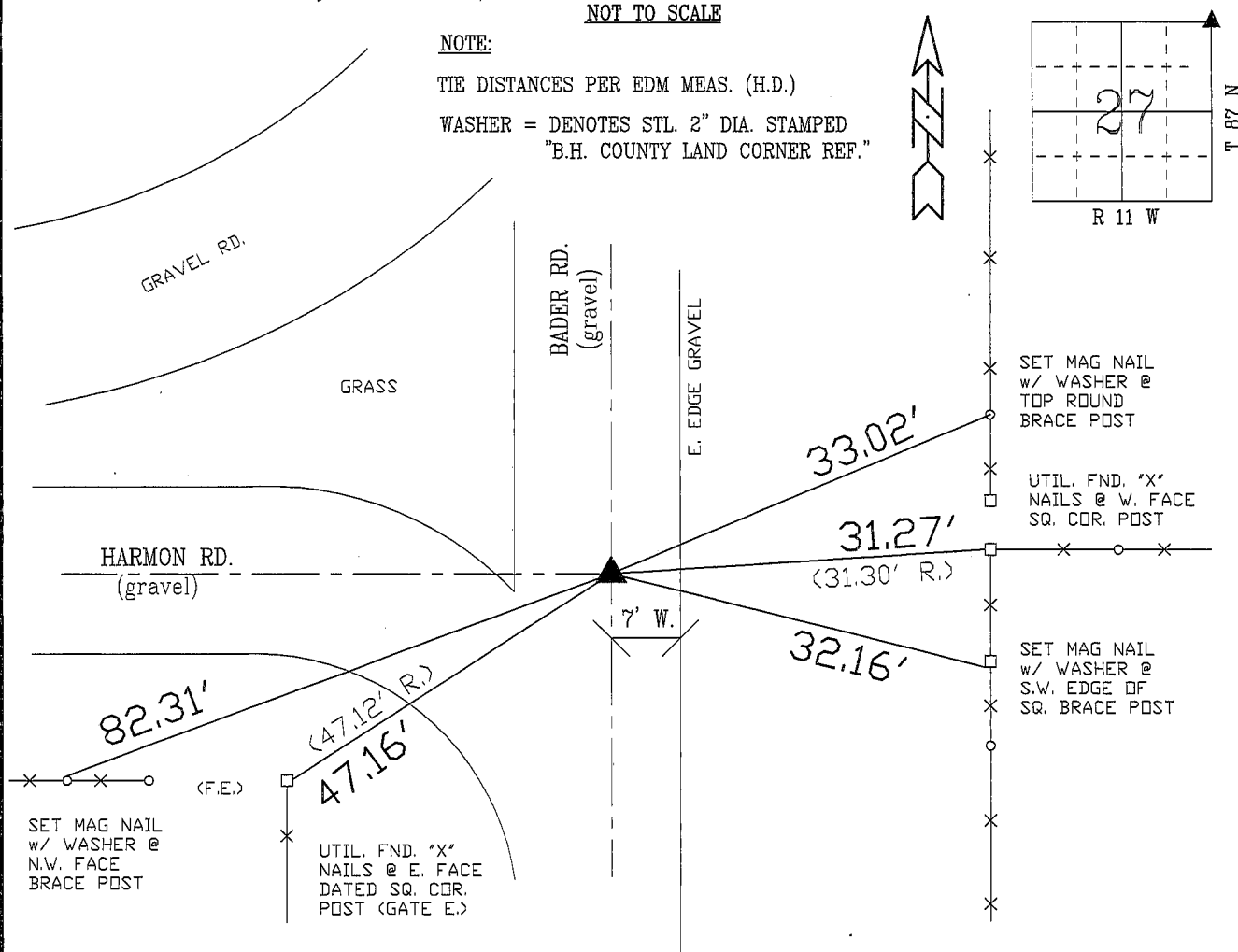
## PLAN - VIEW

(Show a minimum of three reference ties to durable physical objects, relevant monuments and physical conditions that will enable recovery of the corner.)

NOT TO SCALE

## NOTE:

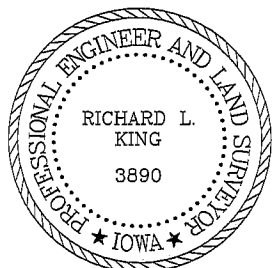
TIE DISTANCES PER EDM MEAS. (H.D.)

WASHER = DENOTES STL. 2" DIA. STAMPED  
"B.H. COUNTY LAND CORNER REF."

FIELD SURVEY: G.T. &amp; C.W. 9/27/2005

PREPARED BY: G. TINKER 9/28/2005

## CERTIFICATION



I hereby certify that this land surveying document was prepared and the related survey work was performed by me or under my direct personal supervision and that I am a duly licensed Land Surveyor under the laws of the State of Iowa.

  
Richard L. King (date)

License Number 3890

My license renewal date is December 31, 2005

Pages or sheets covered by this seal:

This Land Corner Certificate Only.

## LIST CORNERS TO BE INDEXED

Corner	Section	Township	Range
N.E. COR.	27	87 N	11 W
N.W. COR.	26	87 N	11 W
S.E. COR.	22	87 N	11 W
S.W. COR.	23	87 N	11 W