

\*HELLAND ENGINEERING

Jeffrey P. Helland, 1107 Technology Parkway, Cedar Falls, Iowa 50613-6951, (319)-266-0161

## UNITED STATES PUBLIC LAND SURVEY CORNER CERTIFICATE OF

LAND SURVEY MONUMENTS SITUATED IN SECTION NO. 27, TOWNSHIP NO. 87 NORTH, RANGE  
NO. 11 WEST OF THE FIFTH PRINCIPAL MERIDIAN, BLACK HAWK COUNTY, IOWA.  
PREVIOUSLY RECORDED IN N/A

(SHOW REASON FOR PREPARING THIS CERTIFICATE, THE EVIDENCE AND DETAILED PROCEDURES USED IN ESTABLISHING THE  
CORNER POSITIONS AND MONUMENTATION FOUND OR PLACED.)

### MONUMENT DESCRIPTION AND REMARKS:

NO USPLSCC ON FILE. SURVEY COMPLETED IN THE NW 1/4 OF SEC. 26-T87N-R11W.

→ E 1/4 CORNER: WPA NOTES DATED 10/2/1939 CALLS FOR [AT LOCATION INDICATED BY RANDOM LINE DUG HOLE 5 FT.  
SQUARE 18" DEEP, FOUND IRON BAR 3/4"x20" LONG, LOWERED ALL EVIDENCE IN PLACE AND SET C/M WITH CAP MARKED  
27+26, SET TOP OF C/M 12" DEEP]. ALL BLACK COUNTY ENGINEER REFERENCE TIES HAVE BEEN OBLITERATED. FOUND  
1"o.d. IRON PIPE w/YPC #3862 0.8' DEEP.

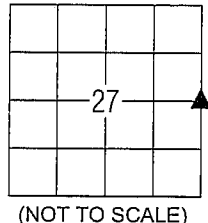
### PLAN VIEW

(SHOW A MINIMUM OF THREE REFERENCE TIES TO DURABLE PHYSICAL OBJECTS, RELEVANT MONUMENTS AND PHYSICAL  
CONDITIONS THAT WILL ENABLE RECOVERY OF THE CORNER.)

NE CORNER  
SEC. 27-T87N-R11W  
FOUND 1 1/4"o.d. IRON PINCHED PIPE  
PER FEE BK #2006 8838

ONE STORY HOUSE

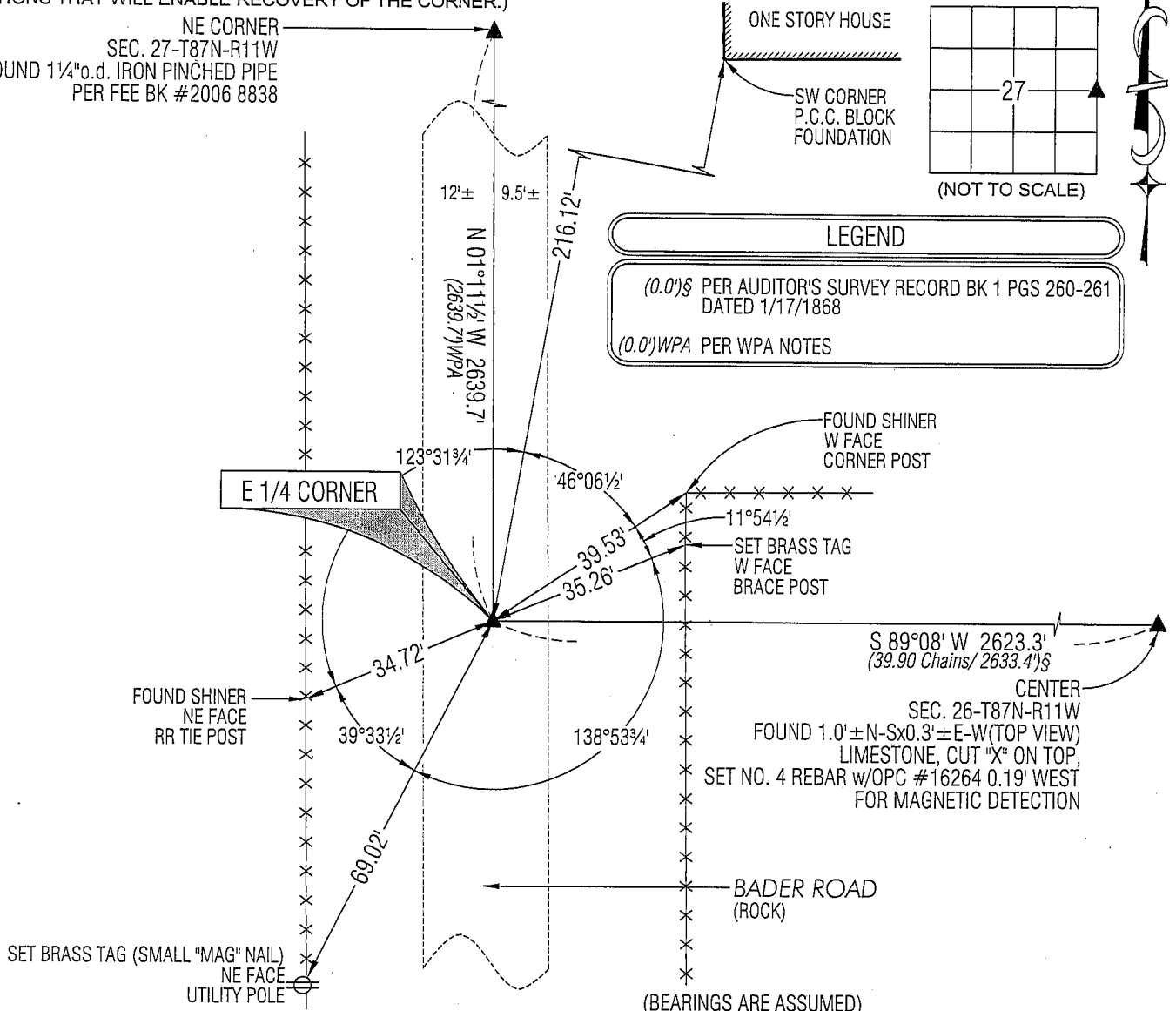
SW CORNER  
P.C.C. BLOCK  
FOUNDATION



### LEGEND

(0.0')\$ PER AUDITOR'S SURVEY RECORD BK 1 PGS 260-261  
DATED 1/17/1868

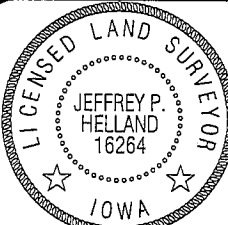
(0.0')WPA PER WPA NOTES



HELLAND ENGINEERING & SURVEYING, LTD.

1107 Technology Parkway  
Cedar Falls, Iowa 50613-6951  
(319)-266-0161

SHINER = 8D NAIL & 1 5/16"Ø METAL SHINER  
BRASS TAG = 8D NAIL & 13/16"Ø BRASS TAG  
OPC = PLASTIC CAP (O=ORANGE, R=RED, Y=YELLOW)  
(00') RECORDED AS FILE NAME: 09-253C1.DWG



I hereby certify that this land surveying document was prepared  
and the related survey work was performed by me or under my  
direct personal supervision and that I am a duly licensed Land  
Surveyor under the laws of the State of Iowa.

*Jeffrey P. Helland 10/20/09*  
Jeffrey P. Helland  
License Number 16264  
My license renewal date is December 31, 2009.  
All pages or sheets are covered by this seal except:

### LIST CORNERS TO BE INDEXED

CORNER	SECTION	TOWNSHIP	RANGE
E 1/4 CORNER	27	87N	11W
W 1/4 CORNER	26	87N	11W

( 9.00 )

Roe