

\*Great Plains Survey Inc  
407 Sycamore St  
La Porte City IA 50651

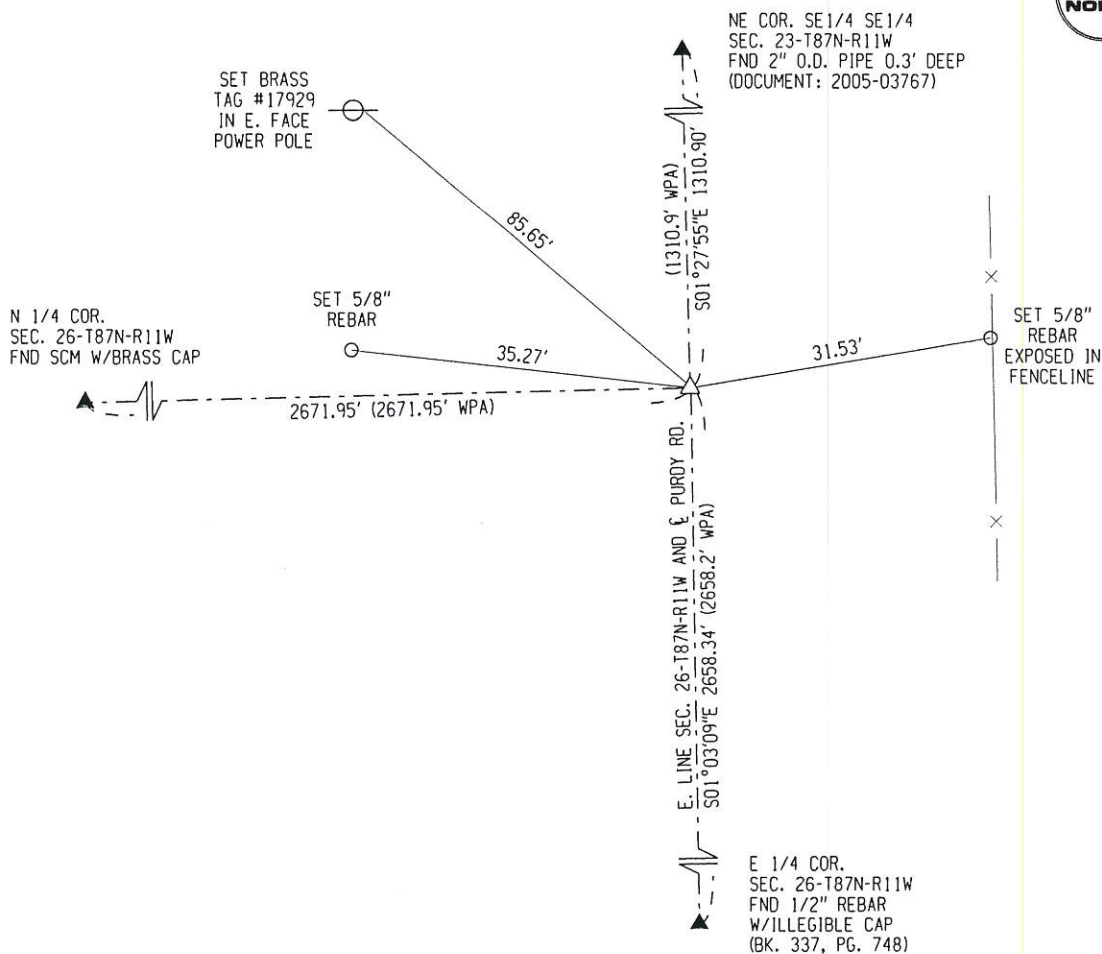
UNITED STATES PUBLIC LAND SURVEY CORNER CERTIFICATE  
OF

Land Survey Monuments situated in Section 26 , Township 87 , Range 11 of the Fifth Principal Meridian, BLACK HAWK County, Iowa, previously recorded in N/A in County Recorder's Office. (Book, Page, Document Number, etc.)

Monument Description and Remarks:

NO RECORDED DOCUMENT ON FILE WITH THE COUNTY RECORDER. RE-ESTABLISHED LOCATION FOR NE CORNER SEC. 26-T87N-R11W FROM WPA TIES DATED AUGUST, 1941 AT 2671.95' EAST OF THE N1/4 CORNER OF SAID SECTION 26 AND 1310.9' SOUTH OF THE NE CORNER SE1/4 SE1/4 OF SEC. 23-T87N-R11W. WPA CALLS FOR A SET CONCRETE MONUMENT. DUG 10" DIAMETER HOLE, PROBED AND USED METAL DETECTOR. FOUND NO EVIDENCE OF MONUMENT. SET 5/8" REBAR WITH ALUMINUM CAP #17929, SET TIES AND TIED OUT.

NE CORNER  
SEC. 26-T87N-R11W



I hereby certify that this land surveying document was prepared and the related survey work was performed by me or under my direct personal supervision and that I am a duly licensed Land Surveyor under the laws of the State of Iowa.

*Jeffrey R. Hutton* 5/17/16  
JEFFREY R. HUTTON LICENSE NO. 17929 DATE

My license is subject to renewal on December 31, 2017.  
This certification applies only to the page upon which it appears.

REASON FOR PREPARING CERTIFICATE:

- ☒ A) THERE IS NO CERTIFICATE FOR THE CORNER ON FILE WITH THE RECORDER OF THE COUNTY IN WHICH THE CORNER IS LOCATED.
- ☐ B) CORNER POSITION DIFFERS FROM THAT SHOWN IN THE PUBLIC RECORDS OF THE COUNTY IN WHICH THE CORNER IS LOCATED.
- ☒ C) THE CORNER MONUMENT HAS BEEN REPLACED OR MODIFIED.
- ☐ D) THE REFERENCE TIES REFERRED TO IN AN EXISTING PUBLIC RECORD ARE INCORRECT.

LEGEND  
— POWER POLE  
○ SET 5/8" REBAR  
△ SET SEC. CORNER  
▲ FOUND SEC. CORNER

SHEET NAME U.S. LAND SURVEY CORNER CERT.  
PROJECT NAME BATHEN FARMSTEAD SPLIT



407 SYCAMORE ST.  
LA PORTE CITY, IA 50651  
(319)342-4774

DATE	DRAWN BY	CHECKED BY	APPROVED BY	REVISION DATE	SCALE	FIELD BOOK No.	PROJECT No.
05/16/16	MJWH	JRH	JRH		NTS		161024

7.000K

(M)