

***HELLAND ENGINEERING**
Jeffrey P. Helland, 1107 Technology Parkway, Cedar Falls, Iowa 50613-6951, (319)-266-0161

UNITED STATES PUBLIC LAND SURVEY CORNER CERTIFICATE OF

LAND SURVEY MONUMENTS SITUATED IN SECTION NO. 26, TOWNSHIP NO. 87 NORTH, RANGE
NO. 11 WEST OF THE FIFTH PRINCIPAL MERIDIAN, BLACK HAWK COUNTY, IOWA.
PREVIOUSLY RECORDED IN N/A

(SHOW REASON FOR PREPARING THIS CERTIFICATE, THE EVIDENCE AND DETAILED PROCEDURES USED IN ESTABLISHING THE
CORNER POSITIONS AND MONUMENTATION FOUND OR PLACED.)

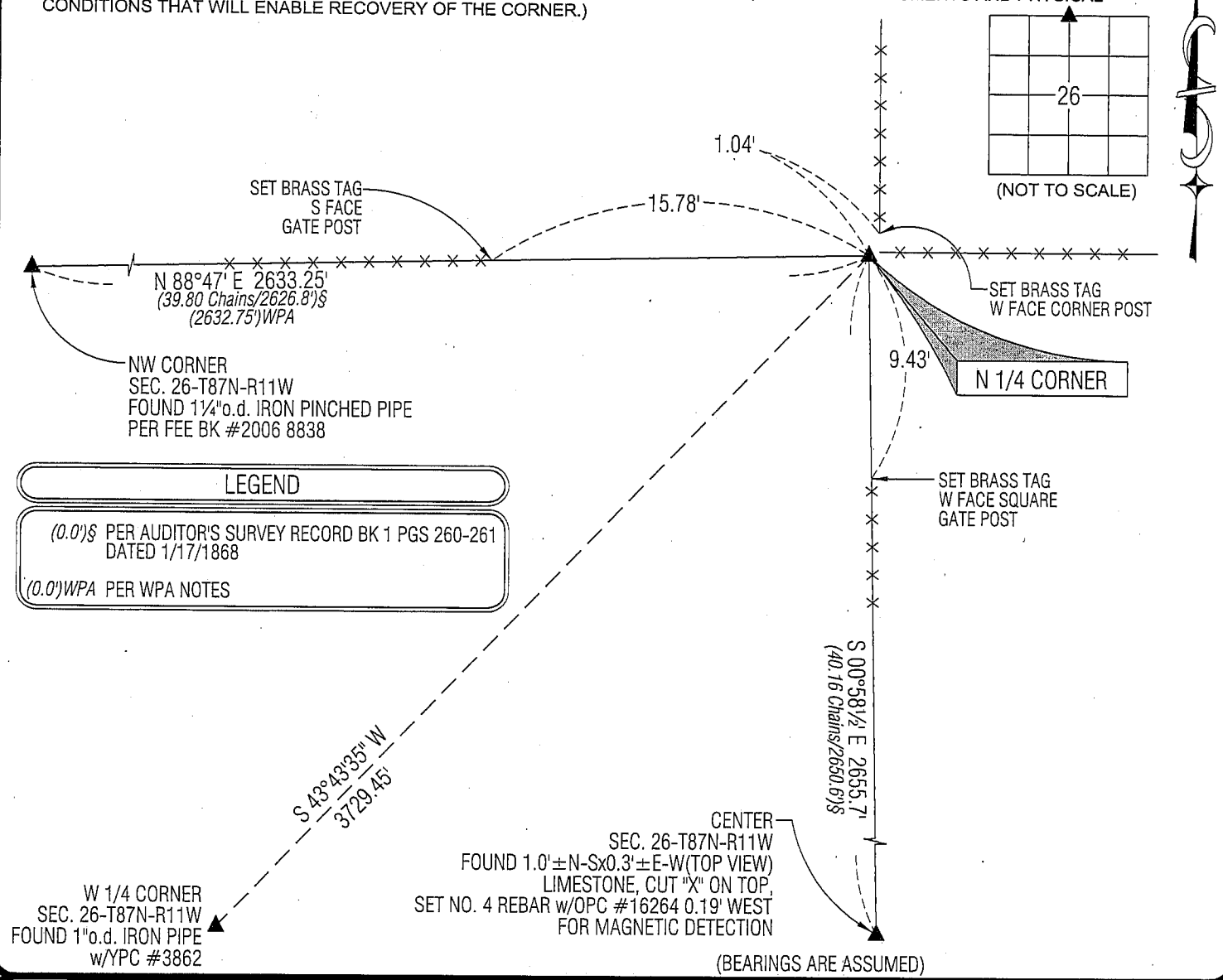
MONUMENT DESCRIPTION AND REMARKS:


NO USPLSCC ON FILE. SURVEY COMPLETED IN THE NW 1/4 OF SEC. 26-T87N-R11W.

→ N 1/4 CORNER: AUDITOR'S SURVEY RECORD BOOK 1 PAGES 260-261 DATED 1/17/1868 DOES NOT STATE WHAT IS AT THE
CORNER, BUT REFERENCES CORNER WITH DISTANCES FROM CENTER AND NW CORNER OF SEC. 26. WPA NOTES DATED
11/8/1939 CALLS FOR [AT LOCATION INDICATED BY RANDOM LINE DUG HOLE 5 FT. SQUARE 18" DEEP, FOUND
....(ERASURE).... S.C.M. 2"UP]. FOUND STANDARD 4" CONCRETE MONUMENT w/BRASS CAP 0.5' ABOVE GRADE, MONUMENT
IS LEANING SLIGHTLY NELY, UTILIZED TOP.

PLAN VIEW

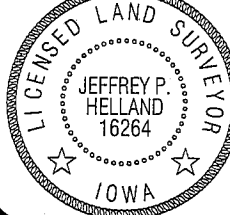
(SHOW A MINIMUM OF THREE REFERENCE TIES TO DURABLE PHYSICAL OBJECTS, RELEVANT MONUMENTS AND PHYSICAL
CONDITIONS THAT WILL ENABLE RECOVERY OF THE CORNER.)





HELLAND ENGINEERING & SURVEYING, LTD.
1107 Technology Parkway
Cedar Falls, Iowa 50613-6951
(319)-266-0161

SHINER = 8D NAIL & 1 5/16"Ø METAL SHINER
BRASS TAG = 8D NAIL & 13/16"Ø BRASS TAG
OPC = PLASTIC CAP (O=ORANGE, R=RED, Y=YELLOW)
(00') RECORDED AS FILE NAME: 09-253C3.DWG



I hereby certify that this land surveying document was prepared
and the related survey work was performed by me or under my
direct personal supervision and that I am a duly licensed Land
Surveyor under the laws of the State of Iowa.
Jeffrey P. Helland 10/20/09
Jeffrey P. Helland
License Number 16264
My license renewal date is December 31, 2009.
All pages or sheets are covered by this seal except:

LIST CORNERS TO BE INDEXED			
CORNER	SECTION	TOWNSHIP	RANGE
N 1/4 CORNER	26	87N	11W
S 1/4 CORNER	23	87N	11W

(9.00)

Rev