

2025-01016
RECORDED: 01/23/2025 10:44:05 AM
RECORDING FEE: \$7.00
REVENUE TAX: \$
COMBINED FEE: \$7.00
SANDIE L. SMITH, RECORDER
BLACK HAWK COUNTY, IOWA

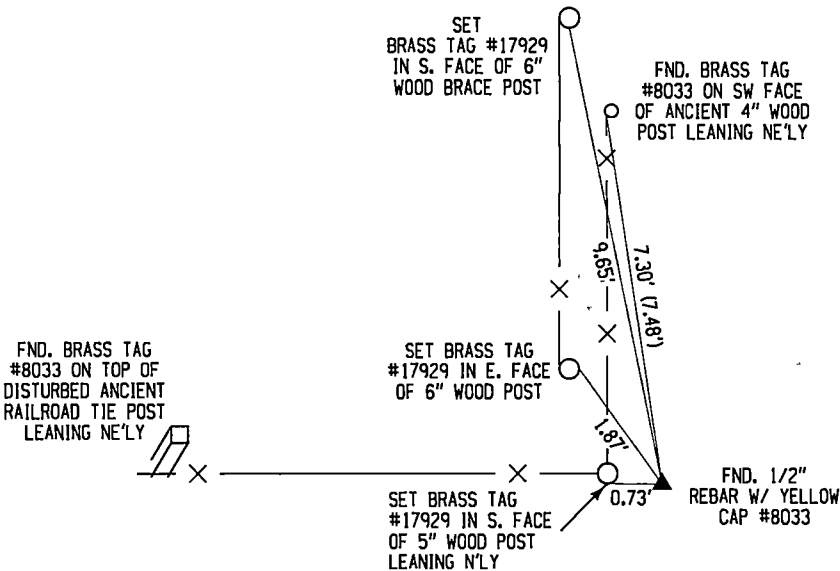
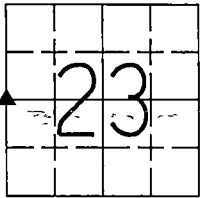
PREPARED BY / RETURN TO JEFFREY R HUTTON, PLS * 407 SYCAMORE ST LA PORTE CITY, IOWA 50651 * (319)342-4774

UNITED STATES PUBLIC LAND SURVEY CORNER CERTIFICATE
OF

Land Survey Monuments situated in Section 23 , Township 87N , Range 11W of the Fifth Principal Meridian, BLACK HAWK County, Iowa, previously recorded in N/A
in County Recorder's Office (Book, Page, Document Number, etc)

Monument Description and Remarks:
FOUND NO CORNER CERTIFICATE ON RECORD WITH THE BLACK HAWK COUNTY RECORDER. USING METAL DETECTOR, SEARCHED INTERSECTION OF A LINE BETWEEN EAST-WEST FENCELINE AND WEST LINE OF SECTION 23. FOUND 1/2" REBAR WITH YELLOW CAP PLS #8033 JUST EAST-SOUTHEAST OF WOOD CORNER POST; CONTACTED WILLIAM KING W/ WAYNE CLAASSEN ENGINEERING TO INQUIRE AND GOT COPY OF UN-RECORDED FIELD NOTES (FIELDBOOK 280, PAGE 43 DATED FEBRUARY 1989) WHICH SHOWS THE W1/4 CORNER AND TIES FOUND A COUPLE OF TIES REFERENCED IN THEIR FIELDNOTES, ACCEPTED SAID MONUMENT AS CORNER AND TIED-OUT

SE COR. NW1/4
SEC. 23, T87N-R11W



LIST CORNERS TO BE INDEXED			
CORNER	SECTION	TOWNSHIP	RANGE
SW COR. NW1/4	23	87N	11W
SE COR. NE1/4	22	87N	11W



I hereby certify that this land surveying document was prepared and the related survey work was performed by me or under my direct personal supervision and that I am a duly licensed Land Surveyor under the laws of the State of Iowa

Jeffrey R Hutton 21 Jan 25
JEFFREY R HUTTON LICENSE NO 17929 DATE

My license is subject to renewal on December 31, 2025
This certification applies only to the page upon which it appears.

- REASON FOR PREPARING CERTIFICATE
- ☒ A) THERE IS NO CERTIFICATE FOR THE CORNER ON FILE WITH THE RECORDER OF THE COUNTY IN WHICH THE CORNER IS LOCATED
 - ☐ B) CORNER POSITION DIFFERS FROM THAT SHOWN IN THE PUBLIC RECORDS OF THE COUNTY IN WHICH THE CORNER IS LOCATED
 - ☐ C) THE CORNER MONUMENT HAS BEEN REPLACED OR MODIFIED
 - ☐ D) THE REFERENCE TIES REFERRED TO IN AN EXISTING PUBLIC RECORD ARE INCORRECT

LEGEND	SHEET NAME U.S. LAND SURVEY CORNER CERT.		PROJECT NAME JESSE PLAT OF SURVEY		SCALE NTS	PROJECT No 231079
	DATE 01/20/2024					
DRAWN BY MJWH		CHECKED BY JRH	APPROVED BY JRH			



407 SYCAMORE ST
LA PORTE CITY, IA 50651
(319)342-4774