

PROOF

FILED FOR RECORD AUG 11

2004

AT 3:00 P. M.

FEE 1-5.00/- 1.00/

COMPARED

BLACK HAWK COUNTY RECORDER

PAUL HELLAND

Jeffrey P. Helland, 1107 Technology Parkway, Cedar Falls, Iowa 50613-6951, (319)-266-0161

UNITED STATES PUBLIC LAND SURVEY CORNER CERTIFICATE
OFLAND SURVEY MONUMENTS SITUATED IN SECTION NO. 23, TOWNSHIP NO. 87 NORTH, RANGE
NO. 11 WEST OF THE FIFTH PRINCIPAL MERIDIAN, BLACK HAWK COUNTY, IOWA.

PREVIOUSLY RECORDED IN BOOK _____, PAGE _____.

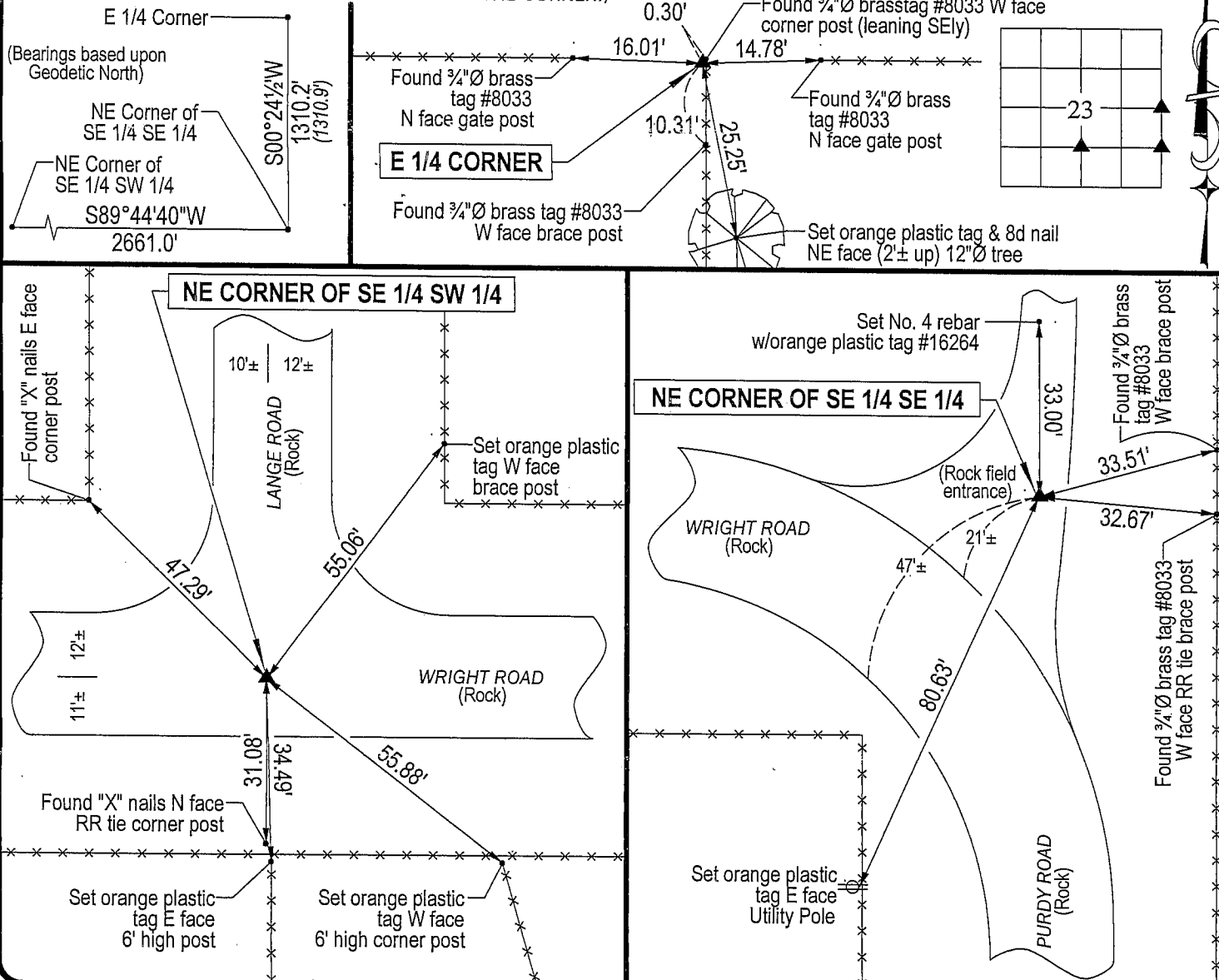
(SHOW REASON FOR PREPARING THIS CERTIFICATE, THE EVIDENCE AND DETAILED PROCEDURES USED IN ESTABLISHING THE
CORNER POSITIONS AND MONUMENTATION FOUND OR PLACED.)

MONUMENT DESCRIPTION AND REMARKS:

No corner certificates on file. Survey completed in the NE 1/4 SE 1/4 of Sec. 23-T87N-R11W.

→ E 1/4 CORNER: Found No. 4 rebar w/yellow plastic cap #8033. Contacted CES, Bill Adams stated Bill King (#8033)
established corner 2/1989 and stated concrete monument could not be found, believe concrete monument was
obliterated when former road was vacated and removed. No. 4 rebar is 0.2' above grade.→ NE CORNER OF SE 1/4 SE 1/4: Random chaining notes dated 4/10/1941 calls for (I.B.) at corner. Found 2"o.d. iron
pipe 0.3' deep corresponding to reference ties provided by CES.→ NE CORNER OF SE 1/4 SW 1/4: Found 1/2" square iron twist pin 0.8' deep corresponding to Plat of Survey recorded
in Misc. Bk 339 Pg 758.

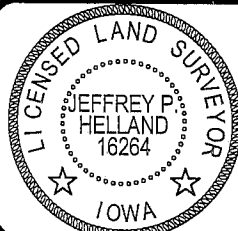
PLAN VIEW

(SHOW A MINIMUM OF THREE REFERENCE TIES TO DURABLE PHYSICAL OBJECTS, RELEVANT MONUMENTS AND PHYSICAL
CONDITIONS THAT WILL ENABLE RECOVERY OF THE CORNER.)

HELLAND ENGINEERING & SURVEYING, LTD.
1107 Technology Parkway
Cedar Falls, Iowa 50613-6951
(319)-266-0161

(00.00') - Per 4/10/1941 random chaining notes

File Name: 04-272c1.drg



I hereby certify that this land surveying document was prepared
and the related survey work was performed by me or under my
direct personal supervision and that I am a duly licensed Land
Surveyor under the laws of the State of Iowa.

Jeffrey P. Helland 8/6/04
Jeffrey P. Helland
License Number 16264
My license renewal date is December 31, 2005.
All pages or sheets are covered by this seal except:

LIST CORNERS TO BE INDEXED

CORNER	SECTION	TOWNSHIP	RANGE
E 1/4 CORNER	23	87N	11W
NE CORNER	23	87N	11W
SE 1/4 SE 1/4			
NE CORNER	23	87N	11W
SE 1/4 SW 1/4			