

File **2012-00006992**

PREPARED BY: *BLACK HAWK COUNTY ENGINEERS OFFICE
316 E. FIFTH STREET, ROOM 211 WATERLOO, IOWA 50703

PH.# (319) 833-3008
FAX.# (319) 833-3139

SLSI 9-94
BHCO 03-09

UNITED STATES PUBLIC LAND SURVEY CORNER CERTIFICATE OF

Land Survey Monuments situated in Section 22 , Township 87 N ,
Range 11 W , of the Fifth Principal Meridian, BLACK HAWK County, Iowa.
Previously recorded in File Book N/A, Page N/A, in County Recorder's Office.

(Show reason for preparing this certificate): **The corner monument has been Replaced or Modified, per Ia. Code 355.11(1)(c)**

(Evidence and detailed procedures used in establishing the corner position(s) and monumentation found or placed.)

Monument Description and Remarks: N.E. COR.,

NO CURRENT LAND CORNER CERT. ON RECORD, WITH RECORD TIES PER BHCO. ENG. HIST. TIES DATED 11-04-1980 (DENOTED AS SET "STUBBY"). PRIOR TO H.M.A. RESURFACING PROJ. (#LFM-1111--7X-07), NO EXISTING CORNER WAS FOUND AT LOCATION. RESURF. PROJECT MILLED -2" EXIST. A.C.C., AND RESURF. w/+4.5" H.M.A. (2.5" INT. & 2" SURF.). AFTER RESURFACING, SET CORNER w/ 5/8"x6"L. (#5) REBAR @ ±2.5' SOUTH OF C.L. JOINT AND ALIGNED WITH CENTERLINE OF ROAD TO NORTH AND CENTERLINE (TANG.) OF ROAD TO EAST. CORNER RESET PER RECORD CLAASSEN ENG. (C.E.S.) TIES DATED 1990/91 FOR BHCO. PROJ. #RS-4669(4)--61-07 (SHT. #6 of 16), WITH PLAN GEOMETRICS FROM N. 1/4 CORNER SECTION 23-T87-R11, AS OBSERVED. DEFL. (CORNER) ANGLE DENOTED FOR SECTION LINE TO E./W. PER COGO OF RTK GPS MEAS. CORNERS (AS OBSERVED).

PLAN VIEW

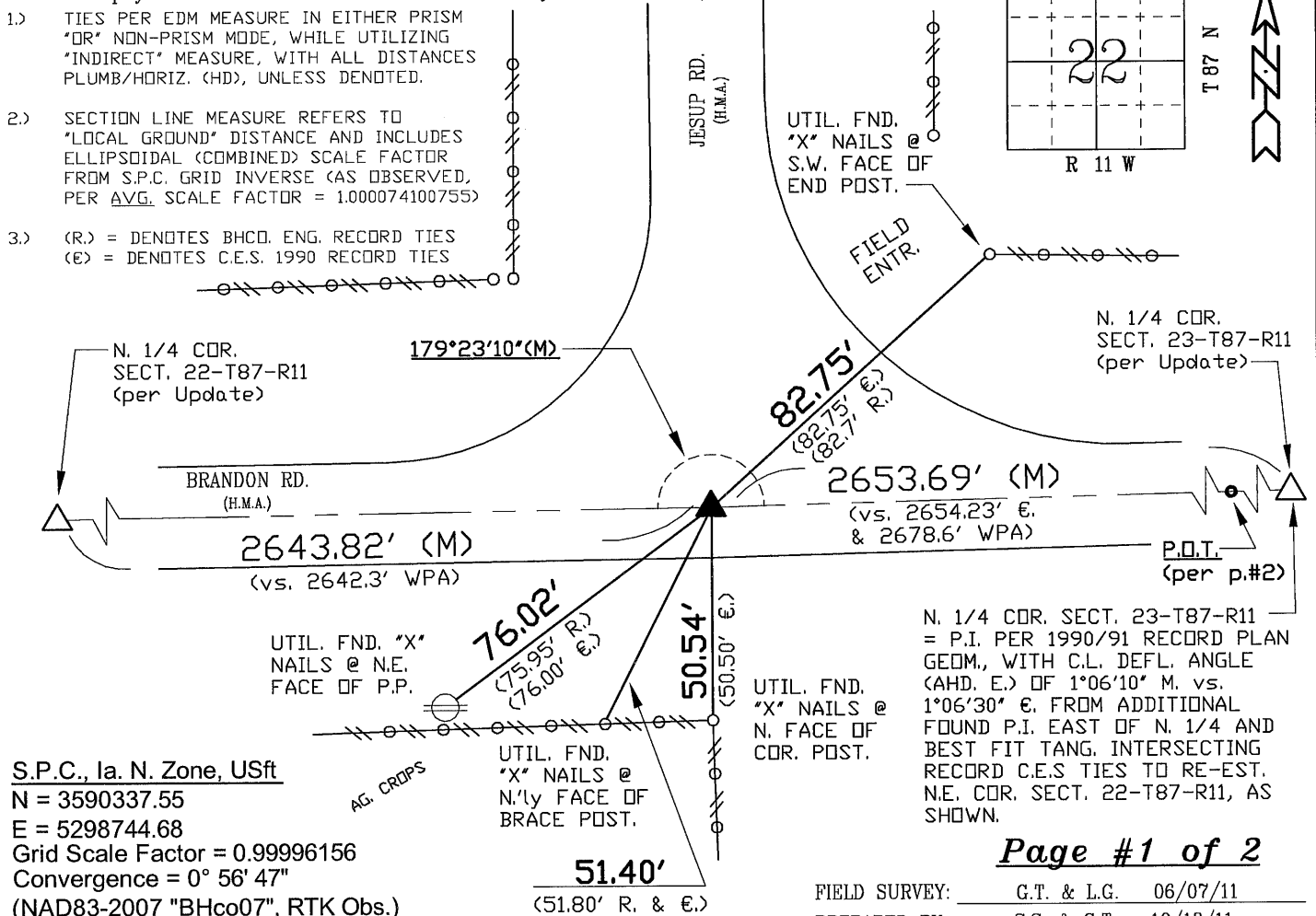
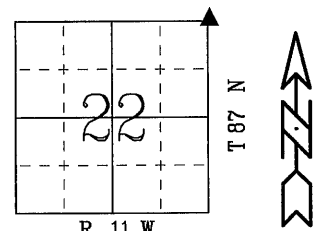
"NOT TO SCALE"

BHco Hist. Ties: BK. #1000 p.22 T87-R11

FIELD BOOK: Ties per Topcon 7003i #Z0115

(Show a minimum of three reference ties to durable physical objects, relevant monuments and physical conditions that will enable recovery of the corner.)

- 1.) TIES PER EDM MEASURE IN EITHER PRISM "OR" NON-PRISM MODE, WHILE UTILIZING "INDIRECT" MEASURE, WITH ALL DISTANCES PLUMB/HORIZ. (HD), UNLESS DENOTED.
- 2.) SECTION LINE MEASURE REFERS TO "LOCAL GROUND" DISTANCE AND INCLUDES ELLIPSOIDAL (COMBINED) SCALE FACTOR FROM S.P.C. GRID INVERSE (AS OBSERVED, PER AVG. SCALE FACTOR = 1.000074100755)
- 3.) (R.) = DENOTES BHCO. ENG. RECORD TIES
(E) = DENOTES C.E.S. 1990 RECORD TIES



Page #1 of 2

FIELD SURVEY: G.T. & L.G. 06/07/11
PREPARED BY: S.S. & G.T. 10/18/11

CERTIFICATION



I hereby certify that this land surveying document was prepared and the related survey work was performed by me or under my direct personal supervision and that I am a duly licensed Land Surveyor under the laws of the State of Iowa.

Geoffrey Allen Tinker 10/18/2011
(date)

License Number 15748

My license renewal date is December 31, 2012

Pages or sheets covered by this seal:

#1 AND #2 of this Corner Cert. Only.

LIST CORNERS TO BE INDEXED

<u>Corner</u>	<u>Section -</u>	<u>Township -</u>	<u>Range</u>
N.E. Cor.	22	87 N	11 W
N.W. Cor.	23	87 N	11 W
S.E. Cor.	15	87 N	11 W
S.W. Cor.	14	87 N	11 W

INDEX OF ABBREVIATIONS

(M) = "Measured" Dimension "NP" = Reflectorless EDM Meas.
(P) = "Platted" Dimension "MLM" = Indirect Measure
(R) = "Record" Dimension "CM" = Concrete Monument
(C) = "Calculated" Dimension "SM" = Survey Marker Spike/Tag
"IGS" = Iowa Geodetic Survey "PK" = PK/MAG Nail Brand Style
"WPA" = Works Progress Admin. Survey
"Φ" = per George Miller Survey (BHC Surveyor 1858-1860)
"B" = per John Ball Survey (BHC Surveyor 1868-1891)
"N" = per Nathan Barber Survey (BHC Surveyor 1908-1931)

PREPARED BY: *BLACK HAWK COUNTY ENGINEERS OFFICE
316 E. FIFTH STREET, ROOM 211 WATERLOO, IOWA 50703

PH.# (319) 833-3008
FAX.# (319) 833-3139

SLSI 9-94
CERT 12-96

UNITED STATES PUBLIC LAND SURVEY CORNER CERTIFICATE OF
Land Survey Monuments situated in Section 23, Township 87 N,
Range 11 W, of the Fifth Principal Meridian, BLACK HAWK County, Iowa.
Previously recorded in File Book N/A, Page N/A, in County Recorder's Office.

(Show reason for preparing this certificate, the evidence and detailed procedures used in establishing the corner positions and monumentation found or placed.)

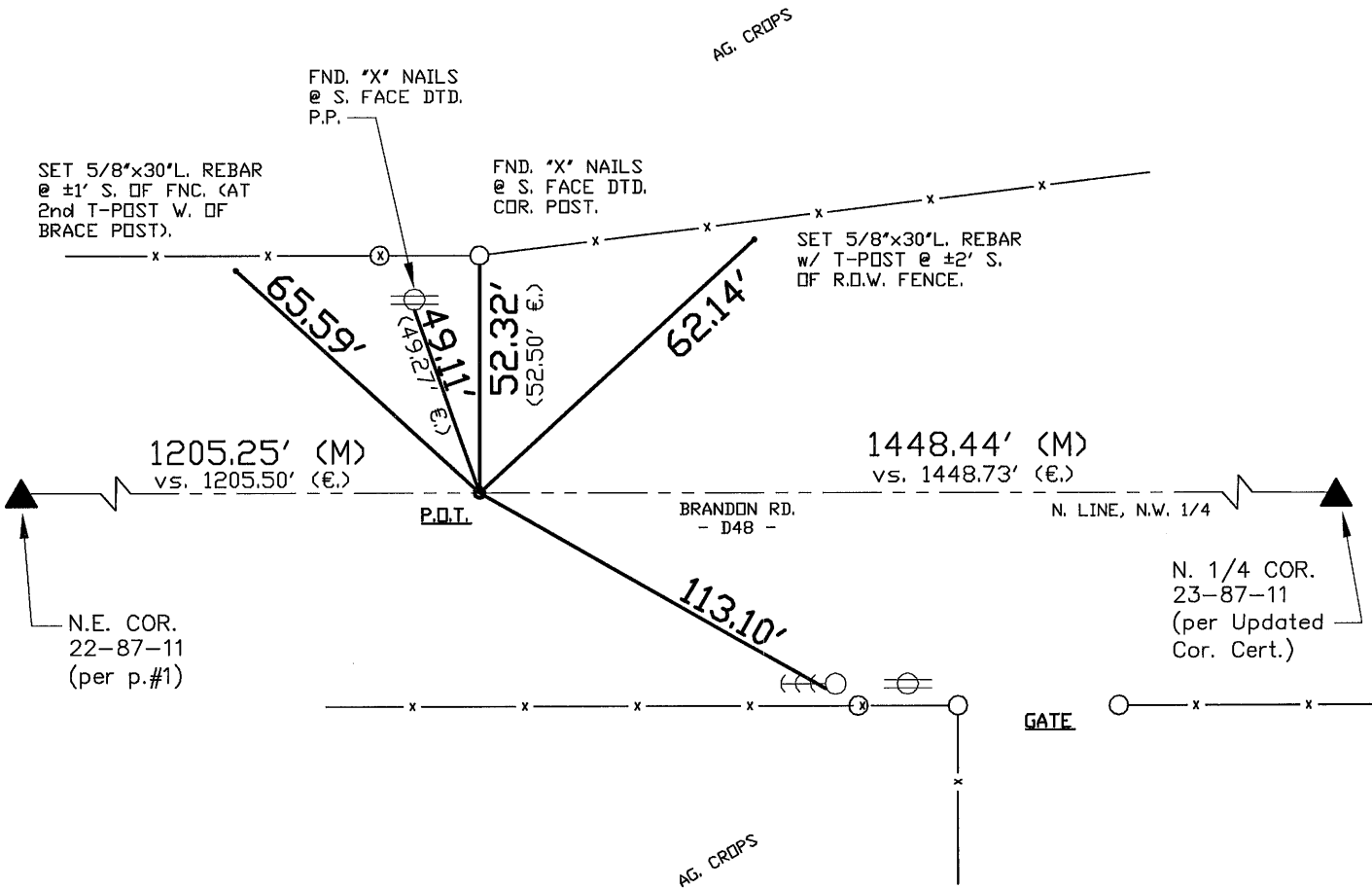
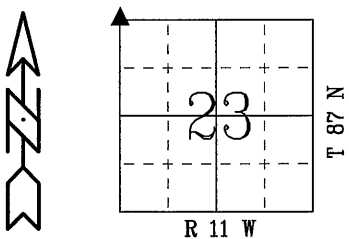
Monument Description and Remarks: CONTINUED: Page #2 of 2
PAGE #2 REFERENCE TIES TO P.O.T. RESET EAST OF SAID SECTION CORNER.
HISTORICAL REF. FOR P.O.T. (NOTHING FOUND), BEING "P.I." OF OLD ROAD
ALIGN. TO THE N.E. (EXISTING R.O.W.) LOCATED 1205.50' EAST OF N.W. COR.
SECT. 23, PER p.#1 DETAILS. BHCD. PROJECT RS-4669(4)--61-07 (PER C.E.S.
PLANS) DETAIL P.I. (HEREIN P.O.T.) AS 0.50' "SOUTH" OF SECTION LINE, WITH
A DEFL. OF 0°02'37" LT. (EAST AHEAD). TWO EXISTING REF. TIES WERE
FOUND @ LOCATION, AND REFERENCED TO THE SECTION LINE PER RESET OF
N.W. COR. DETAILS ON p.#1. ESTABLISHED AS P.O.T. "ON" THE SECTION LINE
AT PROPORTIONAL MEAS. WITH 1990/91 C.E.S PLANS. THIS BEST FIT REF. TO
EXIST. TIES, AND PROVIDE CLARITY FOR ANY FUTURE GEOMETRIC USE / ROW
ESTABLISHMENT. P.O.T ESTABLISHED w/ 5/8"x±6"L. REBAR LOCATED @ C.L.
H.M.A. (A.C.C.) PAVEMENT JOINT, RETIED, AND INCLUDED w/ CORNER RECORD
FOR AS-BUILT PLAN DETAILS AND SECTION LINE GEOM. REFERENCE.

(Show a minimum of three reference ties to durable physical objects, relevant monuments and physical conditions that will enable recovery of the corner.)

NOTE:

TIE DISTANCES MEAS. PER REF. NOTE #1, p.#1
MTL/STL = DENOTES METAL / STEEL WASHER
€ = DENOTES C.E.S RECORD DIM.'S, 1990/91

PLAN - VIEW
NOT TO SCALE



FIELD SURVEY: G.T. & L.G. 06/07/11
PREPARED BY: S.S. & G.T. 10/18/11