

File **2012-00006991**

PH.# (319) 833-3008  
FAX.# (319) 833-3139

SLSI 9-94  
BHCO 03-09

UNITED STATES PUBLIC LAND SURVEY CORNER CERTIFICATE OF  
Land Survey Monuments situated in Section 22 , Township 87 N ,  
Range 11 W , of the Fifth Principal Meridian, BLACK HAWK County, Iowa.  
Previously recorded in File Book N/A, Page N/A, in County Recorder's Office.

(Show reason for preparing this certificate): The corner monument has been Replaced or Modified, per Ia. Code 355.11(1)(c)

(Evidence and detailed procedures used in establishing the corner position(s) and monumentation found or placed.)

Monument Description and Remarks: N. 1/4 CORNER

NO CURRENT LAND CORNER CERT. ON RECORD, WITH RECORD TIES PER BHCO, ENG. HIST. TIES DATED 11-03-1980 (DENOTED AS SET "STUBBY"). PRIOR TO H.M.A. RESURFACING PROJ. (#LFM-1111--7X-07), FOUND 5/8" REBAR FLUSH w/ EXIST. A.C.C. PVMT. & TEMP. REF. CORNER PER RTK GPS, MILLED -2" EXIST. A.C.C., AND RESURF. w/+4.5' H.M.A. (2.5' INT. & 2" SURF.). AFTER RESURFACING (NO SOUNDING REMAINED), RESET CORNER w/ 5/8"x±6"L. (#5) REBAR LOCATED @ 0.25' NORTH OF C.L. JOINT. CORNER ALIGNED (±) @ 2.3' WEST OF FENCELINE TO SOUTH AND @ 2.0' EAST OF FENCELINE TO NORTH. DEFL. (CORNER) ANGLE DENOTED FOR SECTION LINE TO E./W. PER COGO OF RTK GPS MEAS. CORNERS (AS OBSERVED).

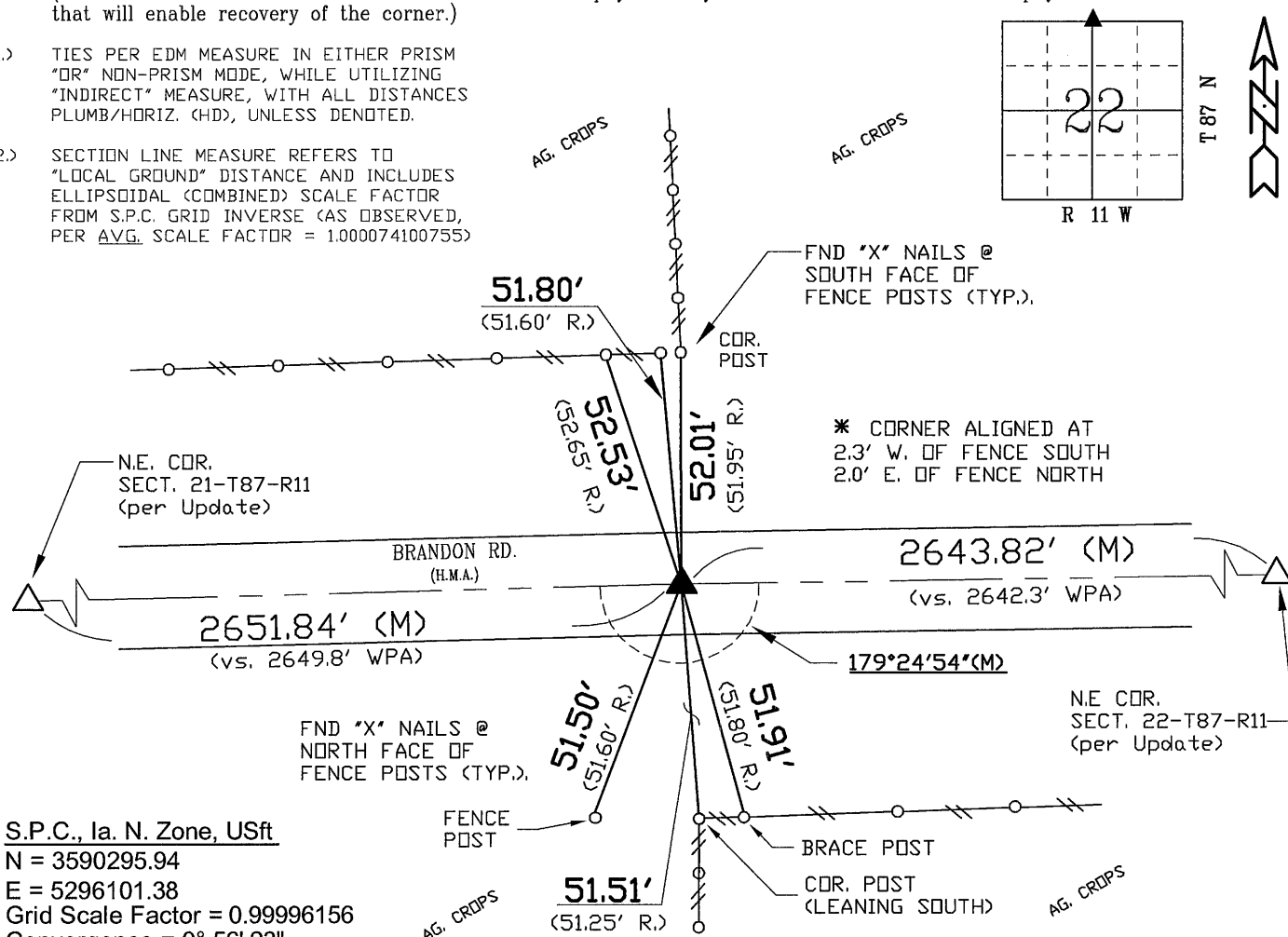
BHco Hist. Ties: BK. #1000 p.22 T87-R11

"NOT TO SCALE"

FIELD BOOK: Ties per Topcon 7003i #Z0115

(Show a minimum of three reference ties to durable physical objects, relevant monuments and physical conditions that will enable recovery of the corner.)

- 1.) TIES PER EDM MEASURE IN EITHER PRISM  
"OR" NON-PRISM MODE, WHILE UTILIZING  
"INDIRECT" MEASURE, WITH ALL DISTANCES  
PLUMB/HORIZ. (HD), UNLESS DENOTED.
- 2.) SECTION LINE MEASURE REFERS TO  
"LOCAL GROUND" DISTANCE AND INCLUDES  
ELLIPSOIDAL (COMBINED) SCALE FACTOR  
FROM S.P.C. GRID INVERSE (AS OBSERVED,  
PER AVG. SCALE FACTOR = 1.000074100755)



S.P.C., Ia. N. Zone, USft

$$N = 3590295.94$$
$$E = 5296101.38$$

Grid Scale Factor = 0.99996156

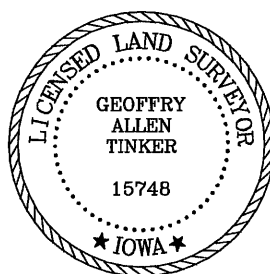
Convergence =  $0^{\circ} 56' 23''$

(NAD83-2007 "BHco07", RTK Obs.)

FIELD SURVEY: G.T. & L.G. 06/07/11

PREPARED BY: S.S. & G.T. 10/18/11

## CERTIFICATION



I hereby certify that this land surveying document was prepared and the related survey work was performed by me or under my direct personal supervision and that I am a duly licensed Land Surveyor under the laws of the State of Iowa.

Geoffrey Allen Tinker 10/18/2011  
Geoffrey Allen Tinker (date)

License Number 15748

My license renewal date is December 31, 2012

Pages or sheets covered by this seal:

This Land Corner Certificate Only.

## LIST CORNERS TO BE INDEXED

<u>Corner</u>	<u>Section</u> -	<u>Township</u> -	<u>Range</u>
N. 1/4 Cor.	22	87 N	11 W
S. 1/4 Cor.	15	87 N	11 W

## INDEX OF ABBREVIATIONS

(M)	= "Measured" Dimension	"NP"	= Reflecterless EDM Meas.
(P)	= "Platted" Dimension	"MLM"	= Indirect Measure
(R)	= "Record" Dimension	"CM"	= Concrete Monument
(C)	= "Calculated" Dimension	"SM"	= Survey Marker Spike/Tag
"GS"	= Iowa Geodetic Survey	"PK"	= PK/MAG Nail Brand Style
"WPA"	= Works Progress Admin. Survey		
"G"	= per George Miller Survey (BHC Surveyor 1858-1860)		
"B"	= per John Ball Survey (BHC Surveyor 1866-1891)		
"N"	= per Nathan Barber Survey (BHC Surveyor 1908-1931)		