

SC  
MISC  
INDEX *1*  
MARGIN  
PROOF  
COMPARE

FILED FOR RECORD May 19, 2000 AT  
4:00 P. M., AND RECORDED IN BOOK 338  
OF MISC PAGE 403  
*Paul H. Helland* RECORDER  
FEE 1-5.00  
PAUL HELLAND

Paul H. Helland, 1107 Technology Parkway, Cedar Falls, Iowa 50613-6951, (319)-266-0161

## UNITED STATES PUBLIC LAND SURVEY CORNER CERTIFICATE OF

LAND SURVEY MONUMENTS SITUATED IN SECTION NO. 21, TOWNSHIP NO. 87 NORTH, RANGE  
NO. 11 WEST OF THE FIFTH PRINCIPAL MERIDIAN, BLACK HAWK COUNTY, IOWA.  
PREVIOUSLY RECORDED IN BOOK \_\_\_\_\_, PAGE \_\_\_\_\_.

(SHOW REASON FOR PREPARING THIS CERTIFICATE, THE EVIDENCE AND DETAILED PROCEDURES USED IN ESTABLISHING THE  
CORNER POSITIONS AND MONUMENTATION FOUND OR PLACED.)

### MONUMENT DESCRIPTION AND REMARKS:

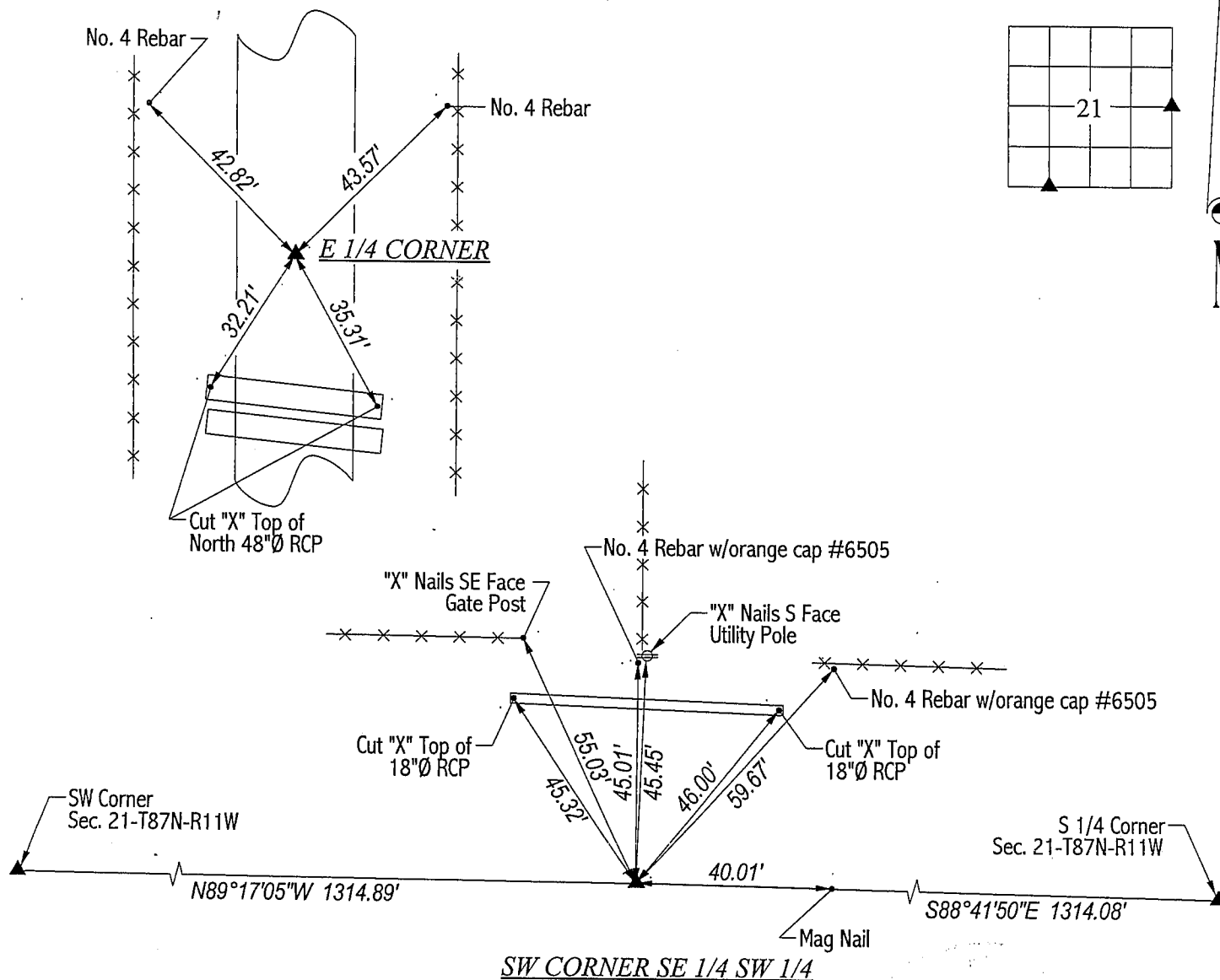
SURVEY DONE IN E 1/2 SW 1/4 OF SEC. 21-T87N-R11W.

E 1/4 CORNER: All county reference ties were obliterated. Using chaining notes from the NE Corner, found broken off  
concrete monument 2.6 feet, set No. 4 rebar w/orange cap #6505 above.

SW CORNER of SE 1/4 SW 1/4: No county reference ties. Found No. 6 rebar in seal-coated surface 6.73' North of a line between  
the SW Corner & S 1/4 Corner. Corner fits R.O.W. fences to the North.

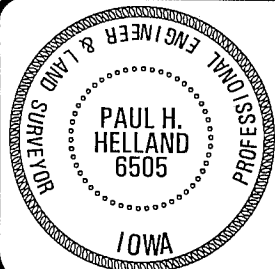
### PLAN VIEW

(SHOW A MINIMUM OF THREE REFERENCE TIES TO DURABLE PHYSICAL OBJECTS, RELEVANT MONUMENTS AND PHYSICAL  
CONDITIONS THAT WILL ENABLE RECOVERY OF THE CORNER.)



HELLAND ENGINEERING & SURVEYING, LTD.  
1107 Technology Parkway  
Cedar Falls, Iowa 50613-6951  
(319)-266-0161

FILE NAME: 00-131CC.DRG



I hereby certify that this land surveying document was prepared  
and the related survey work was performed by me or under my  
direct personal supervision and that I am a duly licensed Land  
Surveyor under the laws of the State of Iowa.

*Paul H. Helland 5/19/00*  
Paul H. Helland  
License Number 6505  
My license renewal date is December 31, 2001.  
All pages or sheets are covered by this seal except:

LIST CORNERS TO BE INDEXED			
CORNER	SECTION	TOWNSHIP	RANGE
E 1/4 CORNER	21	87N	11W
SW CORNER SE 1/4 SW 1/4	21	87N	11W