

PREPARED BY: *BLACK HAWK COUNTY ENGINEERS OFFICE
316 E. FIFTH STREET, ROOM 211 WATERLOO, IOWA 50703

PH.# (319) 833-3008
FAX.# (319) 833-3139

SLSI 9-94
BHCO 03-09

UNITED STATES PUBLIC LAND SURVEY CORNER CERTIFICATE OF
Land Survey Monuments situated in Section 20, Township 87 N,
Range 11 W, of the Fifth Principal Meridian, BLACK HAWK County, Iowa.
Previously recorded in Misc. Book 338, Page 616, in County Recorder's Office.

(Show reason for preparing this certificate): The corner monument has been Replaced or Modified, per Ia. Code 355.11(1)(c)

(Evidence and detailed procedures used in establishing the corner position(s) and monumentation found or placed.)

Monument Description and Remarks: N.E. CORNER
CURRENT LAND CORNER CERT. ON RECORD CALLS FOR 1/2" REBAR IN A.C.C. PAVEMENT.
FOUND 5/8" REBAR & TEMP. REF. CORNER PER RTK GPS FOR H.M.A. RESURF. PROJECT
#LFM-1111--7X-07. EXIST. A.C.C. MILLED -2" w/EXIST. STUB REBAR REMOVED, AND RD.
RESURFACED w/+4.5" H.M.A. (2.5" INT. & 2" SURF.). PROJECT ALSO INCLUDED EXTENSION
OF EXIST. R.C.B. JUST N. OF CORNER (CUR. COR. TIES). MAGNETIC SOUNDING REMAINED
AFTER RESURFING, & RESET CORNER w/ 5/8"x±6"L. (#5) REBAR FLUSH w/PVMT. @ ±4.1'
NORTH OF C.L. JOINT (HORIZ. CURVE) AND ALIGNED w/ C.L. RD. TO NORTH. CORNER ALSO
REF. IN "ACQUISITION PLAT" FOR PARCEL IN N.W. CORNER OF INTERSECTION, WITH CURVE
GEOM. AND LAND CORNER GEOM. FURTHER DETAILED PER CO. RECORDER FILE 2011-009289.

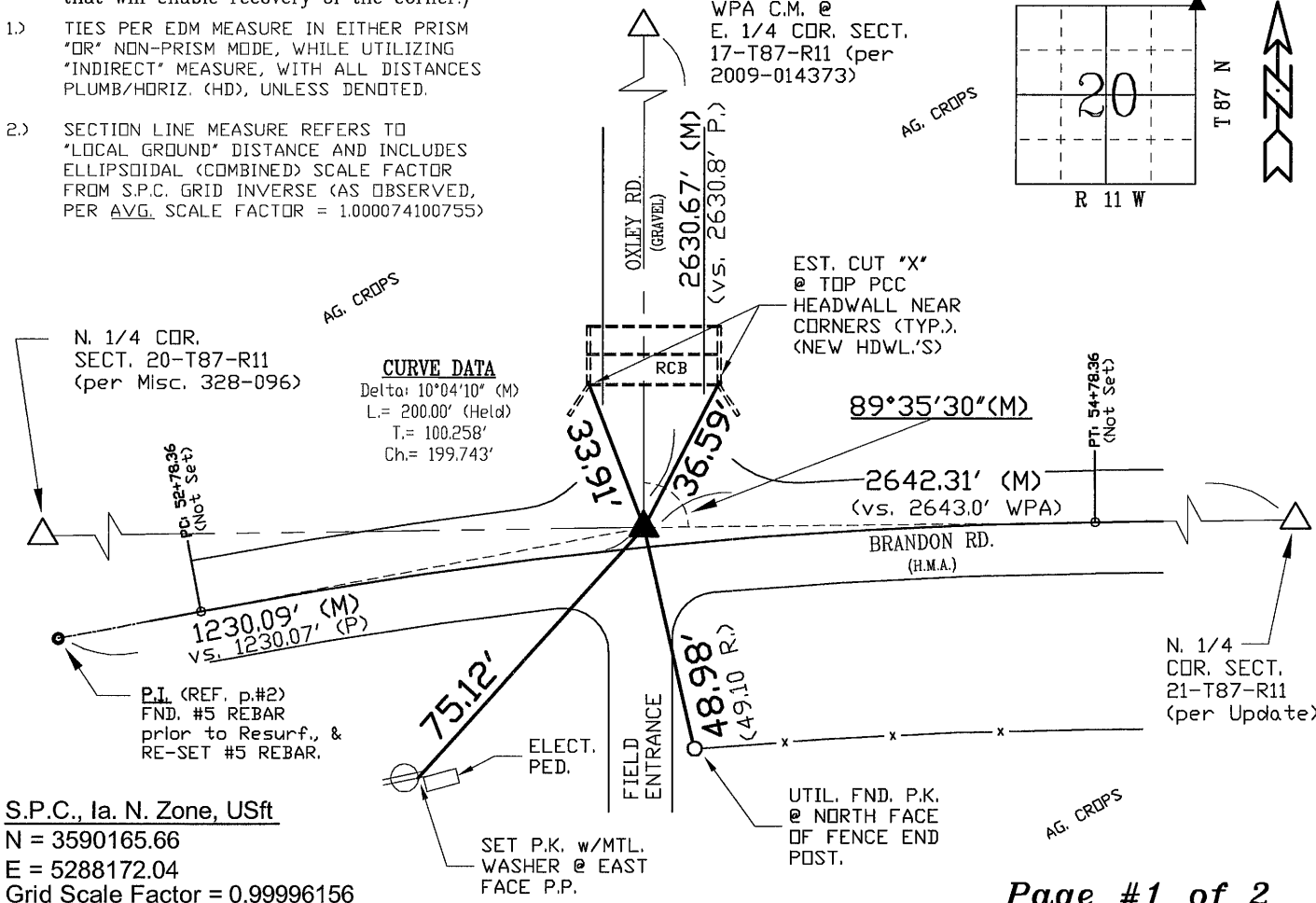
PLAN VIEW

"NOT TO SCALE"

BHco Hist. Ties: BK. #1000 p.20 T87-R11
FIELD BOOK: Ties per Topcon 7003i #Z0115

(Show a minimum of three reference ties to durable physical objects, relevant monuments and physical conditions that will enable recovery of the corner.)

- 1.) TIES PER EDM MEASURE IN EITHER PRISM
'OR' NON-PRISM MODE, WHILE UTILIZING
'INDIRECT' MEASURE, WITH ALL DISTANCES
PLUMB/HORIZ. (HD), UNLESS DENOTED.
- 2.) SECTION LINE MEASURE REFERS TO
'LOCAL GROUND' DISTANCE AND INCLUDES
ELLIPSOIDAL (COMBINED) SCALE FACTOR
FROM S.P.C. GRID INVERSE (AS OBSERVED,
PER AVG. SCALE FACTOR = 1.000074100755)



S.P.C., Ia. N. Zone, USft
N = 3590165.66
E = 5288172.04
Grid Scale Factor = 0.99996156
Convergence = 0° 55' 12"
(NAD83-2007 "BHco07", RTK Obs.)

FIELD SURVEY: G.T. & L.G. 06/07/11
PREPARED BY: S.S. & G.T. 10/18/11

CERTIFICATION



I hereby certify that this land surveying document was prepared and the related survey work was performed by me or under my direct personal supervision and that I am a duly licensed Land Surveyor under the laws of the State of Iowa.
Geoffrey Allen Tinker 10/18/2011 (date)
Geoffrey Allen Tinker
License Number 15748
My license renewal date is December 31, 2012
Pages or sheets covered by this seal:
#1 AND #2 of this Corner Cert. Only.

LIST CORNERS TO BE INDEXED

Corner	Section -	Township -	Range
N.E. Cor.	20	87 N	11 W
N.W. Cor.	21	87 N	11 W
S.E. Cor.	17	87 N	11 W
S.W. Cor.	16	87 N	11 W

INDEX OF ABBREVIATIONS

(M) = "Measured" Dimension
(P) = "Platted" Dimension
(R) = "Record" Dimension
(C) = "Calculated" Dimension
"IGS" = Iowa Geodetic Survey
"WPA" = Works Progress Admin. Survey
"G" = per George Miller Survey (BHco Surveyor 1858-1860)
"B" = per John Ball Survey (BHco Surveyor 1866-1891)
"N" = per Nathan Barber Survey (BHco Surveyor 1908-1931)
"NP" = Reflectorless EDM Meas.
"MLM" = Indirect Measure
"CM" = Concrete Monument
"SM" = Survey Marker Spike/Tag
"PK" = PK/MAG Nail Brand Style

PREPARED BY: *BLACK HAWK COUNTY ENGINEERS OFFICE
316 E. FIFTH STREET, ROOM 211 WATERLOO, IOWA 50703

PH.# (319) 833-3008
FAX.# (319) 833-3139

SLSI 9-94
CERT 12-96

UNITED STATES PUBLIC LAND SURVEY CORNER CERTIFICATE OF
Land Survey Monuments situated in Section 20, Township 87 N,
Range 11 W, of the Fifth Principal Meridian, BLACK HAWK County, Iowa.
Previously recorded in Misc. Book 338, Page 616, in County Recorder's Office.

(Show reason for preparing this certificate, the evidence and detailed procedures used in establishing the corner positions and monumentation found or placed.)

Monument Description and Remarks: CONTINUED: Page #2 of 2
PAGE #2 REFERENCE TIES TO P.I. FOUND SOUTHWEST OF SAID SECTION COR.
w/ FOUND P.I. BEING PREV. LOCATED PER ACQ. PLAT FILE 2011-009289.
FOUND 5/8" REBAR PRIOR TO RESURF. PROJECT & TEMP. REF. PER RTK GPS.
AFTER RESURF. (AS DENOTED ON p.#1), RESET P.I. w/ 5/8"x±6"L. STUB REBAR
LOCATED AT ±2.6' NORTH OF C.L. H.M.A. JOINT (HORIZ. CURVE).
P.I. REFERENCE INCLUDED WITH COR. TIE FOR PUBLIC RECORD OF TANG.
GEOM. FOR LAND CORNER DETAILED PER p.#1, & RETIED FOR AS-BUILT PLAN
(PROJECT) INFORMATION.

(Show a minimum of three reference ties to durable physical objects, relevant monuments and physical conditions that will enable recovery of the corner.)

NOTE:

TIE DISTANCES MEAS. PER REF. NOTE #1, p.#1

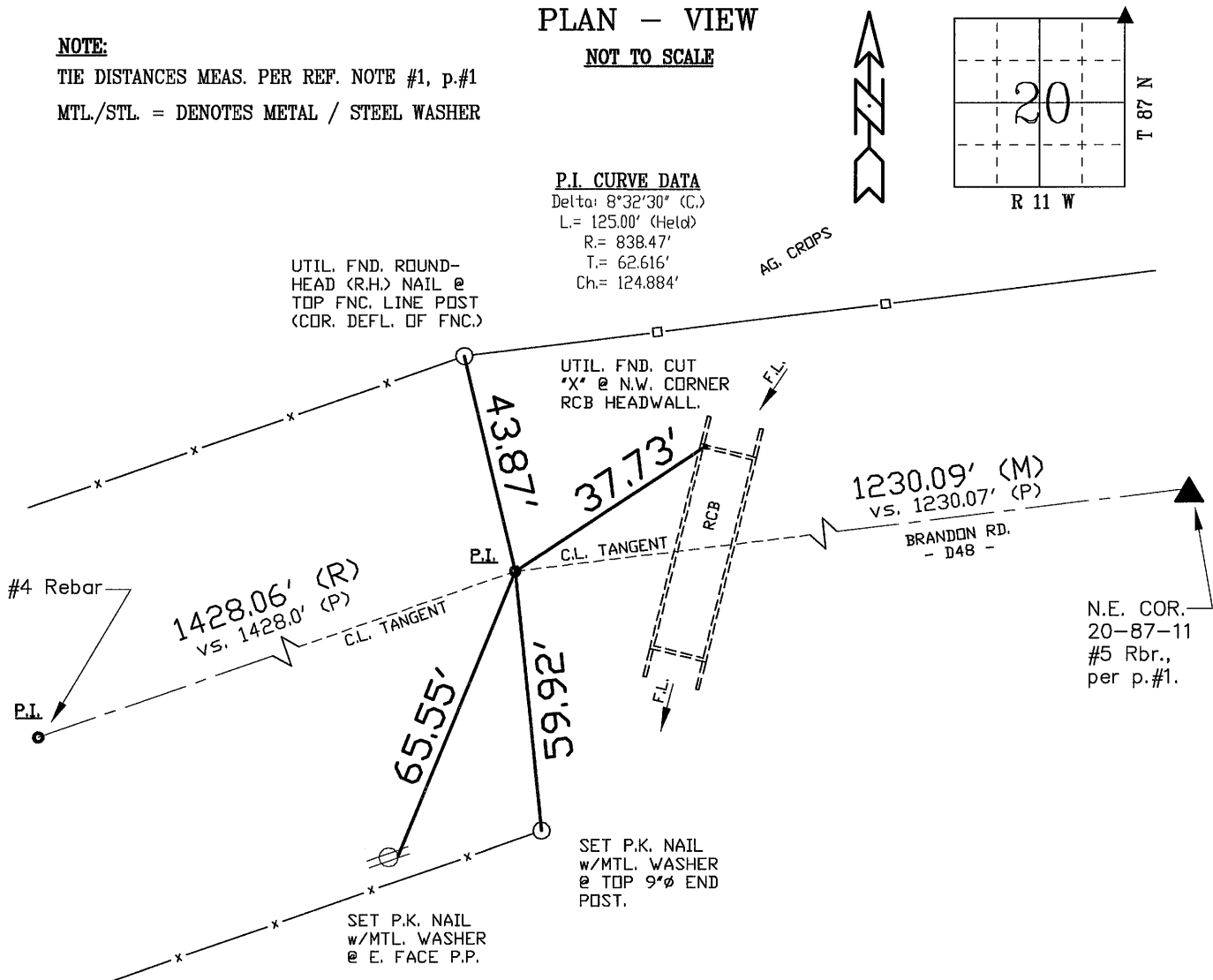
MTL/STL = DENOTES METAL / STEEL WASHER

PLAN - VIEW

NOT TO SCALE

P.I. CURVE DATA

Delta: 8°32'30" (C.)
L= 125.00' (Held)
R= 838.47'
T= 62.616'
Ch= 124.884'



FIELD SURVEY: G.T. & L.G. 06/07/11
PREPARED BY: S.S. & G.T. 10/18/11