



Doc ID: 004972950001 Type: GEN
Kind: CORNER
Recorded: 11/16/2012 at 08:46:14 AM
Fee Amt: \$7.00 Page 1 of 1
Black Hawk County Iowa
JUDITH A MCCARTHY RECORDER
File **2013-00010138**

Prepared by & Return to: Herold - Reicks Surveying, 10 East Main Street, New Hampton, IA 50659, Ph. 641-394-2725

UNITED STATES PUBLIC LAND SURVEY CORNER CERTIFICATE

Land Survey Monuments situated in Section **19**, Township **87** North, Range **11** West of the Fifth Principal Meridian, **Black Hawk** County, Iowa. **1.)** Previously recorded in Document # **2002-1517**, in the County Recorder's office. **2.)** Previously recorded in Document # **2005-19151**, in the County Recorder's office.

This certificate is being prepared in compliance with Iowa Code Chapter 355.11 because:



1 & 2

- ☐ There is no certificate on file for this corner.
- ☐ There are no longer three valid ties of record.
- ☐ There are changes to reference ties of record.
- ☒ There is change of monumentation of record.
- ☐ To clarify description of record monument (ties).

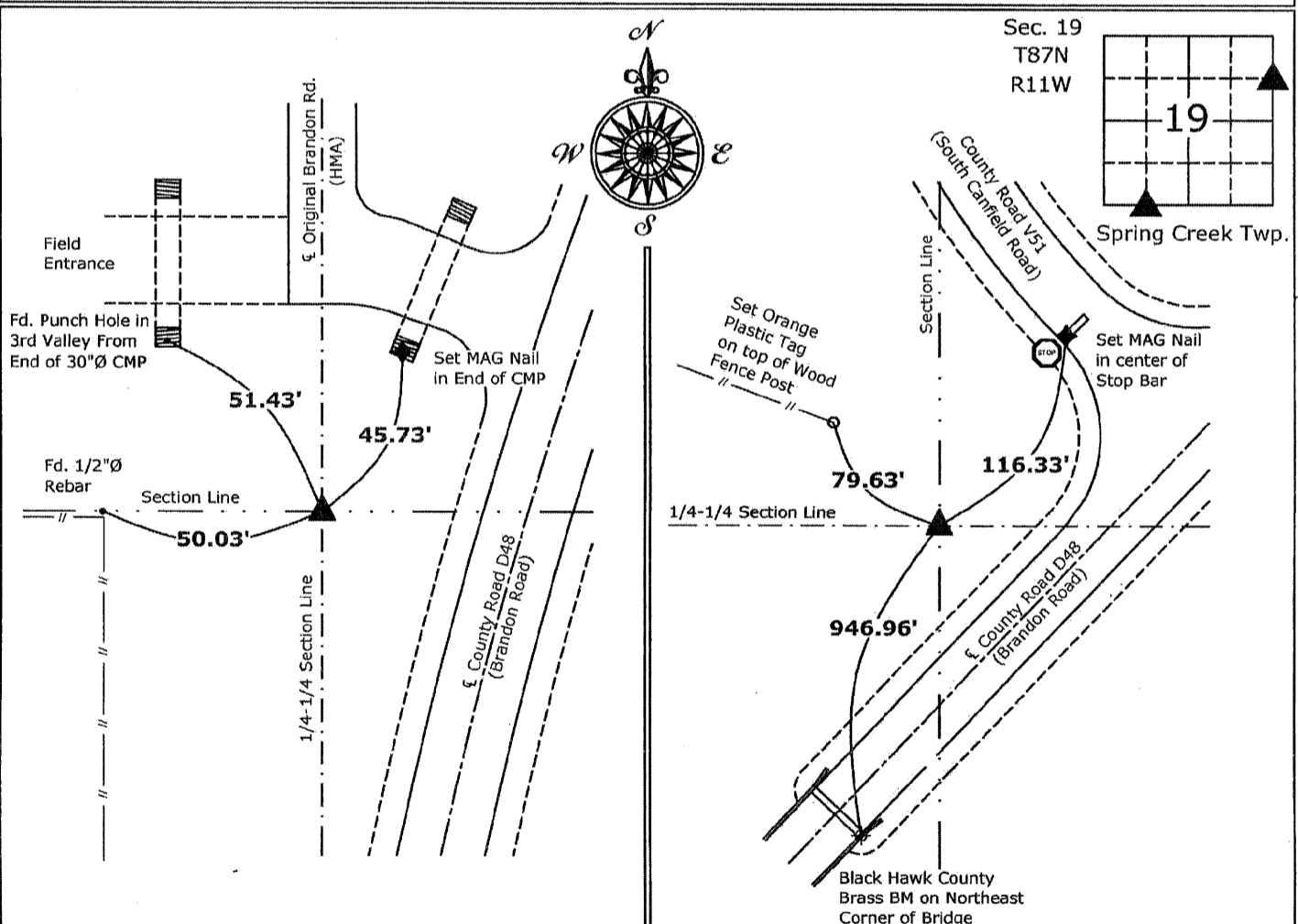
Monument Description and Remarks:

1.) Southwest Corner SE 1/4-SW 1/4: Set 5/8"Ø rebar w/2"Ø aluminum cap PLS 19211 at previous location (Found PK Nail) by means of coordinates obtained prior to highway reconstruction, Project No. LFM-1109-7X-07.

2.) Northeast Corner SE 1/4-NE 1/4 Corner: Set 5/8"Ø rebar w/2"Ø aluminum cap PLS 19211 at previous location (Found 5/8"Ø Rebar) by means of coordinates obtained prior to highway reconstruction, Project No. LFM-1109-7X-07.

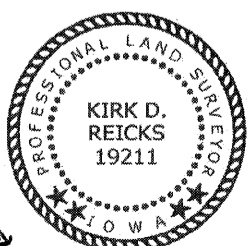
PLAN - VIEW

(Show a minimum of three reference ties to durable physical objects, relevant monuments and physical conditions that will enable recovery of the corner.)



1.) Southwest Corner SE 1/4-SW 1/4 Section 19-87-11
Set 5/8"Ø rebar w/2"Ø aluminum cap PLS 19211

2.) Northeast Corner SE 1/4-NE 1/4 Section 19-87-11
Set 5/8"Ø rebar w/2"Ø aluminum cap PLS 19211



I hereby certify that this land surveying document was prepared and the related survey work was performed by me or under my direct personal supervision and that I am a duly licensed Land Surveyor under the laws of the State of Iowa.

Kirk D. Reicks 11-15-12
Kirk D. Reicks Date:

License number 19211

My license renewal date is December 31, 2012.

Sheets covered by this seal: Individual sheet only

List Corners to be Indexed

Corners	Section	Twp.	Range
NE SE SW	19	87	11
NE SE NE	19	87	11

Project Number: 2011-063

FB: Misc. 1, Pg. 66