

INDEX &
MARGIN
PROOF
COMPARE

BLACK HAWK COUNTY IOWA:SS 021517
Filed for record FEB 6, 2002 at
4:00 P.M. and recorded in Book _____
of _____ Page _____
of Catherine J. Soss Recorder
Fee 1-5.00/
HELLAND ENGINEERING & SURVEYING

Paul H. Helland, 1107 Technology Parkway, Cedar Falls, Iowa 50613-6951, (319)-266-0161

UNITED STATES PUBLIC LAND SURVEY CORNER CERTIFICATE OF

LAND SURVEY MONUMENTS SITUATED IN SECTION NO. 19, TOWNSHIP NO. 87 NORTH, RANGE
NO. 11 WEST OF THE FIFTH PRINCIPAL MERIDIAN, BLACK HAWK COUNTY, IOWA.

PREVIOUSLY RECORDED IN BOOK _____, PAGE _____.

(SHOW REASON FOR PREPARING THIS CERTIFICATE, THE EVIDENCE AND DETAILED PROCEDURES USED IN ESTABLISHING THE
CORNER POSITIONS AND MONUMENTATION FOUND OR PLACED.)

MONUMENT DESCRIPTION AND REMARKS:

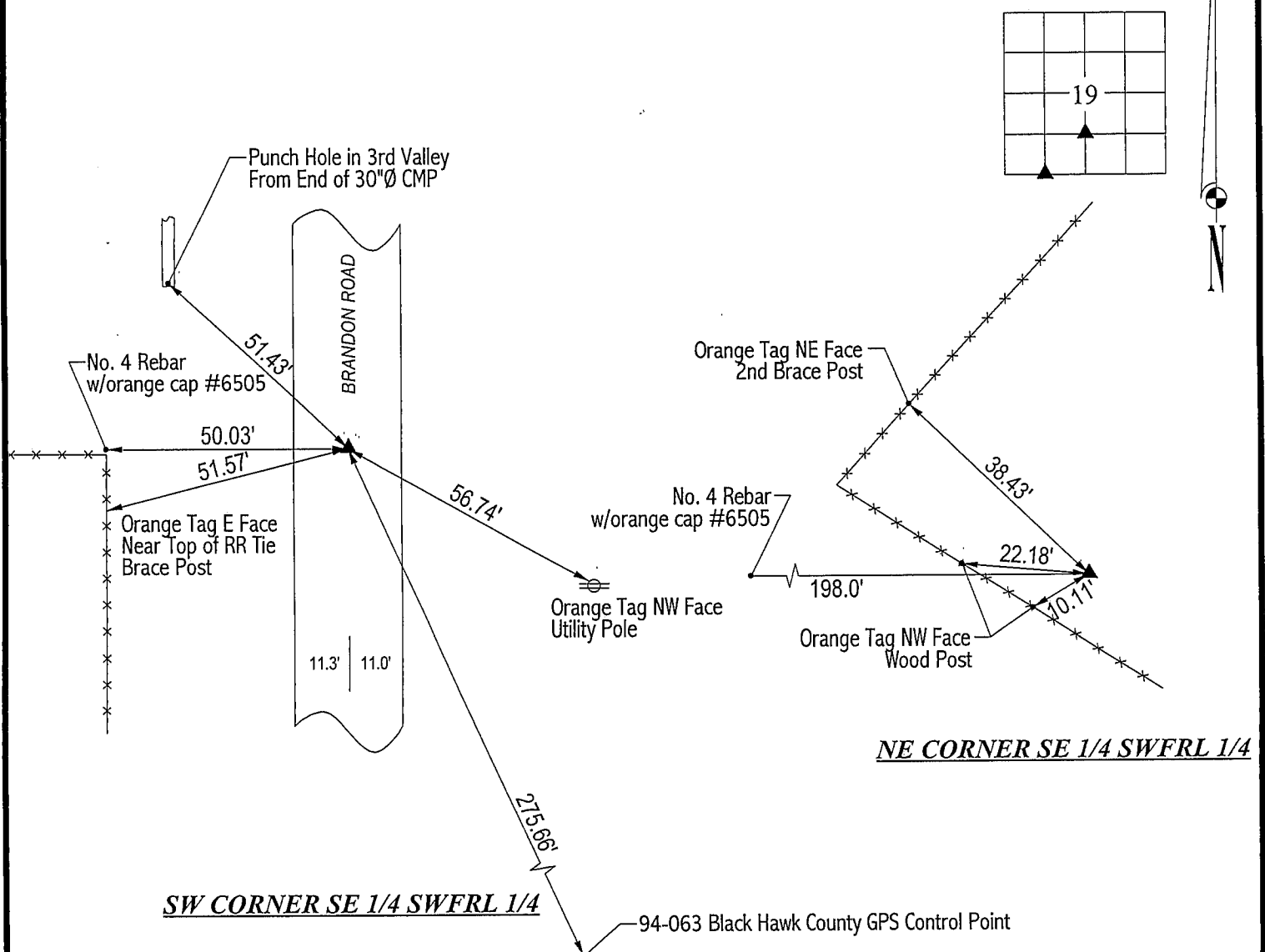
SURVEY DONE ON THE NORTH & EAST LINES OF GOVERNMENT LOT 8 SEC. 19-T87N-R11W, NORTH LINE OF NE 1/4 SEC. 30.

SW CORNER SE 1/4 SWFRL 1/4: There are no Black Hawk County Engineer reference ties. Found "P-K" Nail in A.C.C. pavement
in center of large painted white "X" and in line with fence running West.

NE CORNER SE 1/4 SWFRL 1/4: There are no Black Hawk County Engineer reference ties. Set No. 4 rebar w/orange cap #6505
in line with the S 1/4 Corner of Sec. 19 and the center of Sec. 19 based upon Black Hawk County Conservation Commission
Acquisition Plat of Survey dated 1997.

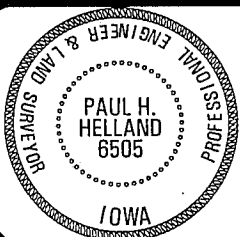
PLAN VIEW

(SHOW A MINIMUM OF THREE REFERENCE TIES TO DURABLE PHYSICAL OBJECTS, RELEVANT MONUMENTS AND PHYSICAL
CONDITIONS THAT WILL ENABLE RECOVERY OF THE CORNER.)



HELLAND ENGINEERING & SURVEYING, LTD.
1107 Technology Parkway
Cedar Falls, Iowa 50613-6951
(319)-266-0161

FILE NAME: 02-111C4.DRG



I hereby certify that this land surveying document was prepared
and the related survey work was performed by me or under my
direct personal supervision and that I am a duly licensed Land
Surveyor under the laws of the State of Iowa.

Paul H. Helland 2/1/02
Paul H. Helland
License Number 6505
My license renewal date is December 31, 2003.
All pages or sheets are covered by this seal except:

LIST CORNERS TO BE INDEXED			
CORNER	SECTION	TOWNSHIP	RANGE
SW CORNER	19	87N	11W
SE 1/4 SWFRL 1/4			
NE CORNER	19	87N	11W
SE 1/4 SWFRL 1/4			

BOOK 0345 592