

File **2012-00005433**

PH.# (319) 833-3008
FAX.# (319) 833-3139

SLSI 9-94
BHCO 03-09

(Show reason for preparing this certificate): The corner monument has been Replaced or Modified, per Ia. Code 355.11(1)(c)

(Evidence and detailed procedures used in establishing the corner position(s) and monumentation found or placed.)

Monument Description and Remarks: **N.E. CORNER:**

CORNER RESET FOR COLD-IN-PLACE RECYL. & H.M.A. RESURF. PROJECT LFM-121--7X-07. PRIOR TO RESURF. PROJECT, FOUND 5/8" REBAR PER CURRENT RECORD AND TEMP. REF. COR. LOCATION PER RTK GPS. AFTER 4" DP. MILL (RECYCLE), FOUND 5/8" SMOOTH STEEL PIN x 6"L. @ ± RTK REFERENCED LOCATION (LAYING ON SIDE). REMOVED AND EXCAVATED TO -0.30' DEEP WITH NO SOUNDING REMAINING & NO FURTHER EXCAVATION. PVMT. RESURFACED w/+3" H.M.A. SURFACE COURSE, THEN RESET CORNER WITH 5/8" (#5) x 6"L REBAR ALIGNED w/ ±C.L. S.R. INTERSECTION E/W. DELF. (CORNER) ANGLE DENOTED FOR SECTION LINE TO N/S. PER COGO OF RTK GPS MEAS. CORNERS (AS OBSERVED).

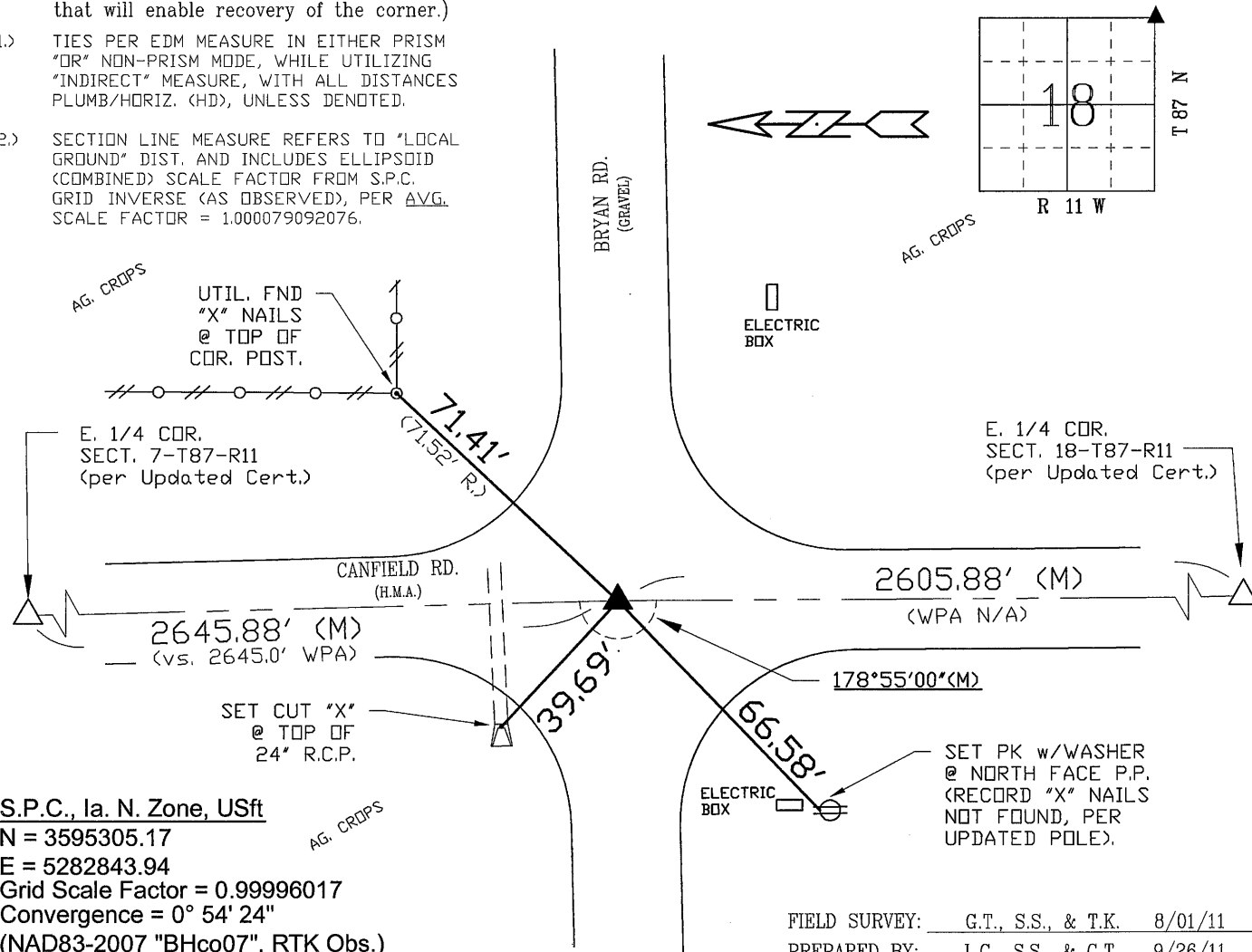
"NOT TO SCALE"

BHco Hist. Ties: BK. #1000 p. 18 T88-R11

FIELD BOOK: Ties per Topcon 7003i #Z0115

(Show a minimum of three reference ties to durable physical objects, relevant monuments and physical conditions that will enable recovery of the corner.)

- 1.) TIES PER EDM MEASURE IN EITHER PRISM "OR" NON-PRISM MODE, WHILE UTILIZING "INDIRECT" MEASURE, WITH ALL DISTANCES PLUMB/HORIZ. (HD), WITH ALL DENOTED.
- 2.) SECTION LINE MEASURE REFERS TO "LOCAL GROUND" DIST. AND INCLUDES ELLIPSOID (COMBINED) SCALE FACTOR FROM S.P.C. GRID INVERSE (AS OBSERVED), PER AVG. SCALE FACTOR = 1.000079092076.

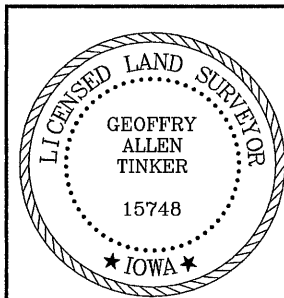


S.P.C., Ia. N. Zone, USft
N = 3595305.17
E = 5282843.94
Grid Scale Factor = 0.99996017
Convergence = 0° 54' 24"
(NAD83-2007 "BHco07", RTK Obs.)

FIELD SURVEY: G.T., S.S., & T.K. 8/01/11

PREPARED BY: L.G., S.S., & G.T. 9/26/11

CERTIFICATION



I hereby certify that this land surveying document was prepared and the related survey work was performed by me or under my direct personal supervision and that I am a duly licensed Land Surveyor under the laws of the State of Iowa.

Geoffrey Allen Tinker 9/26/2011
Geoffrey Allen Tinker (date)

License Number 15748

My license renewal date is December 31, 2012

Pages or sheets covered by this seal:

This Land Corner Certificate Only.

LIST CORNERS TO BE INDEXED

<u>Corner</u>	<u>Section</u> -	<u>Township</u> -	<u>Range</u>
N.E. Cor.	18	87 N	11 W
N.W. Cor.	17	87 N	11 W
S.E. Cor.	7	87 N	11 W
S.W. Cor.	8	87 N	11 W

INDEX OF ABBREVIATIONS

(M) = "Measured" Dimension	"NP" = Reflectorless EDM Meas.
(P) = "Platted" Dimension	"MLM" = Indirect Measure
(R) = "Record" Dimension	"CM" = Concrete Monument
(C) = "Calculated" Dimension	"SM" = Survey Marker Spike/Tag
"IGS" = Iowa Geodetic Survey	"PK" = PK/MAG Nail Brand Style
"WPA" = Works Progress Admin. Survey	
"Φ" = per George Miller Survey (BhCo Surveyor 1858-1860)	
"B" = per John Ball Survey (BhCo Surveyor 1866-1891)	
"N" = per Nathan Barber Survey (BhCo Surveyor 1908-1931)	