

SC  
MISC  
INDEX  
MARGIN  
PROOF  
COMPARE

BLACK HAWK COUNTY IOWA:SS  
Filed for record MAY 4, 2001 at  
4:00 P.M. and recorded in Book 342  
of MISC at Page 587  
RECORDED  
FEE 1-5.00X/  
HELLAND ENGINEERING & SURVEYING LTD

Paul H. Helland, 1107 Technology Parkway, Cedar Falls, Iowa 50613-6951, (319)-266-0161

## UNITED STATES PUBLIC LAND SURVEY CORNER CERTIFICATE OF

LAND SURVEY MONUMENTS SITUATED IN SECTION NO. 18, TOWNSHIP NO. 87 NORTH, RANGE NO. 11 WEST OF THE FIFTH PRINCIPAL MERIDIAN, BLACK HAWK COUNTY, IOWA.  
PREVIOUSLY RECORDED IN BOOK, PAGE.

(SHOW REASON FOR PREPARING THIS CERTIFICATE, THE EVIDENCE AND DETAILED PROCEDURES USED IN ESTABLISHING THE CORNER POSITIONS AND MONUMENTATION FOUND OR PLACED.)

### MONUMENT DESCRIPTION AND REMARKS:

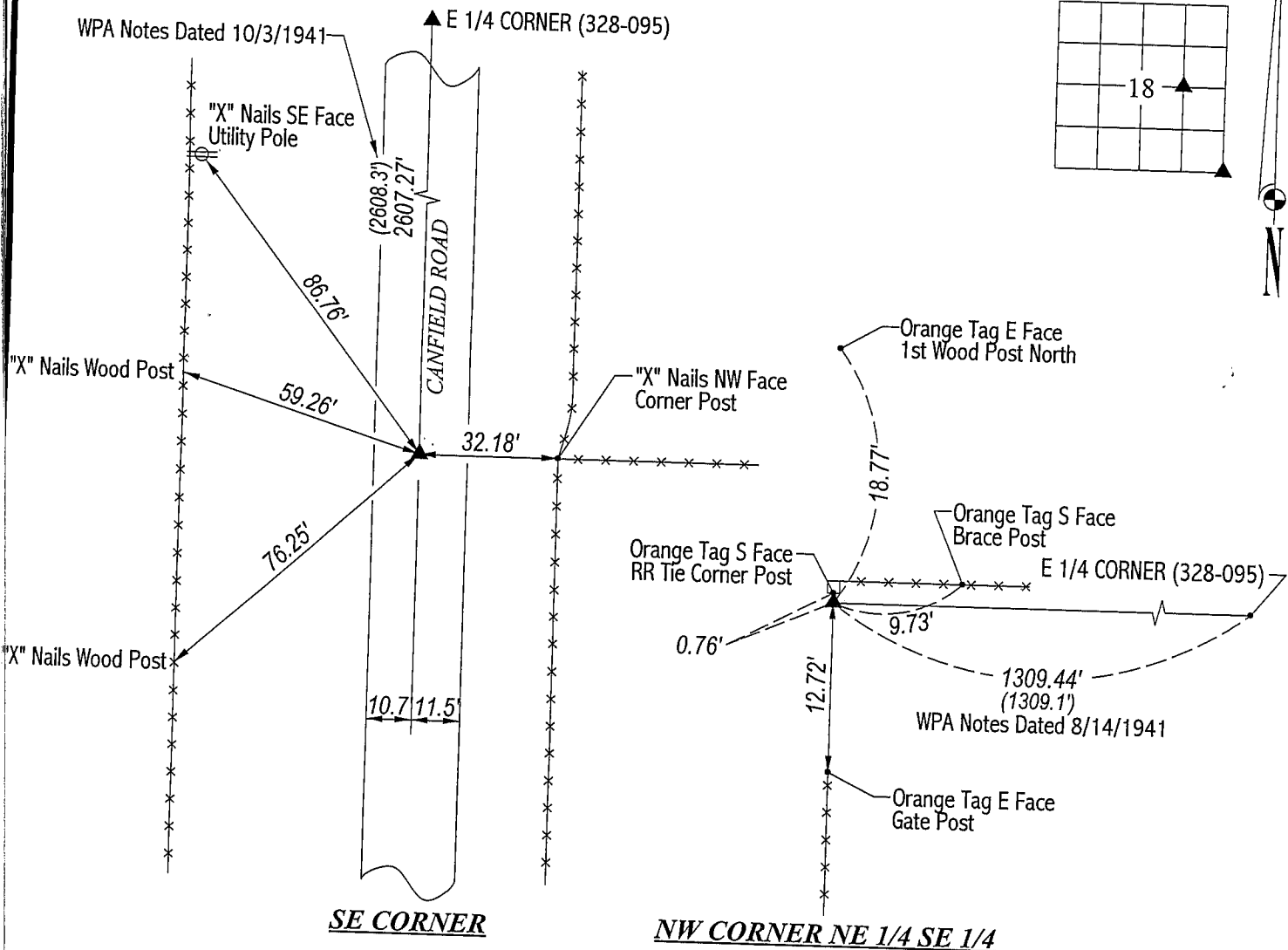
SURVEY DONE IN NE 1/4 SE 1/4 OF SEC. 18-T87N-R11W.

SE CORNER: Found No. 5 rebar in A.C.C. pavement per Black Hawk County reference ties.

NW CORNER OF NE 1/4 SE 1/4: No county reference ties. WPA notes dated 8/14/1941 show a corner post referred to as being 1.3' North of a straight line between the Center and the E 1/4 Corner. Found 15"x12"x2" thick limestone lying flat 0.4' deep South of RR tie corner post. Cut "X" on top center of stone and set No. 4 rebar w/orange cap #6505 0.47' East of "X" for magnetic detection.

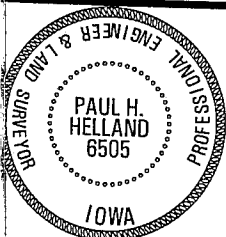
### PLAN VIEW

(SHOW A MINIMUM OF THREE REFERENCE TIES TO DURABLE PHYSICAL OBJECTS, RELEVANT MONUMENTS AND PHYSICAL CONDITIONS THAT WILL ENABLE RECOVERY OF THE CORNER.)



**HES**

HELLAND ENGINEERING & SURVEYING, LTD.  
1107 Technology Parkway  
Cedar Falls, Iowa 50613-6951  
(319)-266-0161



I hereby certify that this land surveying document was prepared and the related survey work was performed by me or under my direct personal supervision and that I am a duly licensed Land Surveyor under the laws of the State of Iowa.

Paul H. Helland 5/2/01  
Paul H. Helland  
License Number 6505  
My license renewal date is December 31, 2001.  
All pages or sheets are covered by this seal except:

FILE NAME: 01-180CC.DRG

### LIST CORNERS TO BE INDEXED

CORNER	SECTION	TOWNSHIP	RANGE
SE CORNER	18	87N	11W
NW CORNER NE 1/4 SE 1/4	18	87N	11W