

SC  
Misc

4:00 P  
Misc

Nov 14, 1997  
Book 328  
Page 94

9725

1-5-00/  
CLAASSEN ENGINEERING

WAYNE CLAASSEN ENGINEERING AND SURVEYING, INC.  
P.O. BOX 898 WATERLOO, IOWA 50704-0898

PHONE: (VOICE) 319-235-6294  
(FAX) 319-235-0028

### UNITED STATES PUBLIC LAND SURVEY CORNER CERTIFICATE

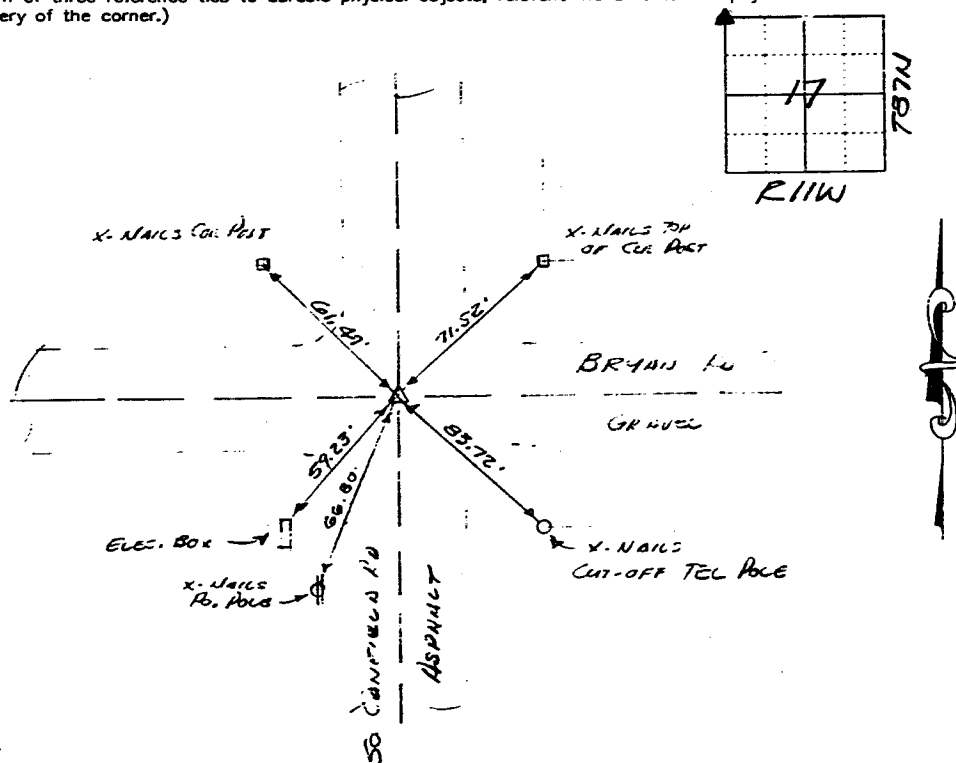
Land Survey Monuments situated in Section 17, Township 87N, Range 11W, of the Fifth Principal Meridian, BLACK HAWK County, Iowa.  
Previously recorded in N/A in County Recorder's Office.  
(book, page, document number, etc.)

(Show reason for preparing this certificate, the evidence and detailed procedures used in establishing the corner positions and monumentation found or placed.)

Monument Description and Remarks NEW CORNER FOUND 2 1/2" REBAR EMBED IN ASPHALT  
PROVING PER B.N.G. TIES.

#### PLAN - VIEW

(Show a minimum of three reference ties to durable physical objects, relevant monuments and physical conditions that will enable recovery of the corner.)



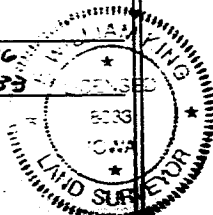
475-41

I hereby certify that the survey work was completed and this certificate was prepared by me or under my direct personal supervision and that I am a duly licensed land surveyor under the laws of the state of Iowa.

Signature: Edwin A. King  
(Name typed or printed: EDWIN A. KING)

Date: Nov. 14, 1997 Lic. No. 6033

SEAL



#### List Corners to be Indexed

Corners	Section	Twp	Range
NEW	17	87N	11W

BOOK 328 PAGE 094