

SC  
MISC  
INDEX  
MARGIN  
PROOF  
COMPARE

BLACK HAWK COUNTY IOWA:SS

024902

Filed for record JUN 1, 2000 at  
4:00 P.M. and recorded in Book 338  
of MISC Page 617

*Catherine J. Lass* RECORDER

FEE 1-5.00/

WAYNE CLAASSEN ENGINEERING & SURVEYING INC.

WAYNE CLAASSEN ENGINEERING AND SURVEYING, INC.  
P.O. BOX 898 WATERLOO, IOWA 50704-0898

PHONE: (VOICE) 319-235-6294  
(FAX) 319-235-0028

## UNITED STATES PUBLIC LAND SURVEY CORNER CERTIFICATE

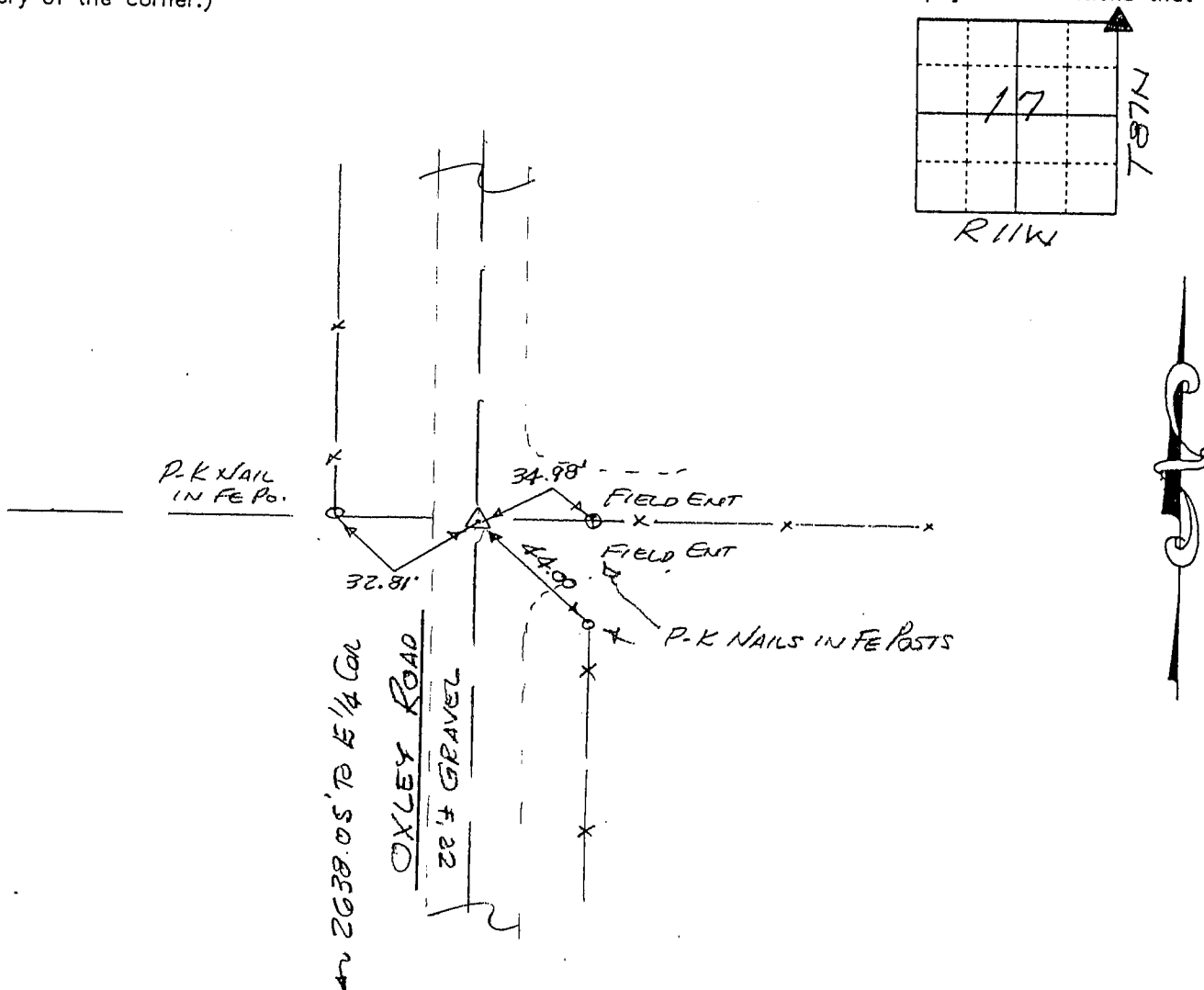
Land Survey Monuments situated in Section 17, Township 87N, Range 11W, of the Fifth Principal Meridian, BLACK HAWK County, Iowa.  
Previously recorded in N/A in County Recorder's Office.  
(book, page, document number, etc.)

(Show reason for preparing this certificate, the evidence and detailed procedures used in establishing the corner positions and monumentation found or placed.)

Monument Description and Remarks NE CORNER - FOUND BROKEN SCM (Top cut off by grading of roadway?), with 3/4" rebar on No. side, approx. 6" deep in gravel road. Used center of remaining monument as NE corner.

### PLAN - VIEW

(Show a minimum of three reference ties to durable physical objects, relevant monuments and physical conditions that will enable recovery of the corner.)



416-73

I hereby certify that the survey work was completed and this certificate was prepared by me or under my direct personal supervision and that I am a duly licensed land surveyor under the laws of the state of Iowa.

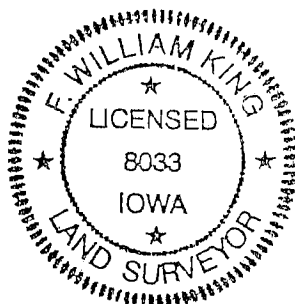
Signature: *F. William King*  
(Name typed or printed:) F. WILLIAM KING

Date: 5-31-2000 Lic. No. 8033

SEAL

#### List Corners to be Indexed

Corners	Section	Twp	Range
NE	17	87N	11W



BOOK 338 PAGE 617