

Misc

Nov 14, 1997
recorded in Cook 328
Page 98

9729

4:00 p
Misc _____ Page 98

[Signature] Recorder

Net 1-5.00/

WAYNE CLAASSEN ENGINEERING AND SURVEYING, INC. **CLAASSEN ENGINEERING**
P.O. BOX 898 WATERLOO, IOWA 50704-0898 PHONE: (VOICE) 319-235-6294
(FAX) 319-235-0028

UNITED STATES PUBLIC LAND SURVEY CORNER CERTIFICATE

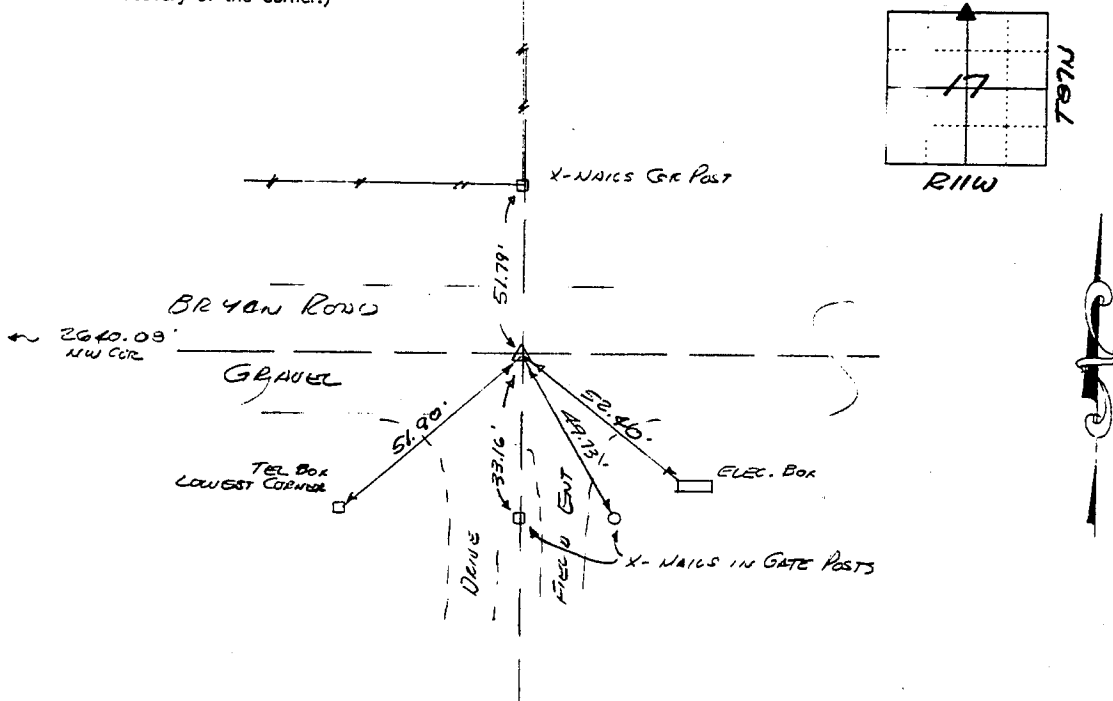
Land Survey Monuments situated in Section 17, Township 87N, Range 114W, of the Fifth Principal Meridian, BLACK HAWK County, Iowa. Previously recorded in 111A in County Recorder's Office.
(book, page, document number, etc.)

(Show reason for preparing this certificate, the evidence and detailed procedures used in establishing the corner positions and monumentation found or placed.)

Monument Description and Remarks N¹/₄ COR. FOUND 3/8" P. REBAR 6" DEEP IN GRAVE
2nd B.H. Co. TIES.

PLAN - VIEW

(Show a minimum of three reference ties to durable physical objects, relevant monuments and physical conditions that will enable recovery of the corner.)



475-41

I hereby certify that the survey work was completed and this certificate was prepared by me or under my direct personal supervision and that I am a duly licensed land surveyor under the laws of the state of Iowa.

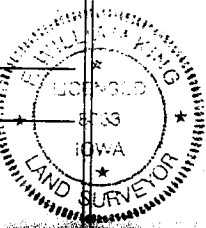
List Corners to be Indexed

Corners	Section	Twp	Range
N 1/4	17	87N	11W

Signature: F. William King
(Name typed or printed:) F. William King

Date: Nov. 14, 1997 Lic. No. 8033

SEAL



329-008