

File 2009-00014374

Jeffrey P. Helland, 1107 Technology Parkway, Cedar Falls, Iowa 50613-6951, (319)-266-0161

# UNITED STATES PUBLIC LAND SURVEY CORNER CERTIFICATE OF

LAND SURVEY MONUMENTS SITUATED IN SECTION NO. 16, TOWNSHIP NO. 87 NORTH, RANGE  
NO. 11 WEST OF THE FIFTH PRINCIPAL MERIDIAN, BLACK HAWK COUNTY, IOWA.  
PREVIOUSLY RECORDED IN N/A

(SHOW REASON FOR PREPARING THIS CERTIFICATE, THE EVIDENCE AND DETAILED PROCEDURES USED IN ESTABLISHING THE CORNER POSITIONS AND MONUMENTATION FOUND OR PLACED.)

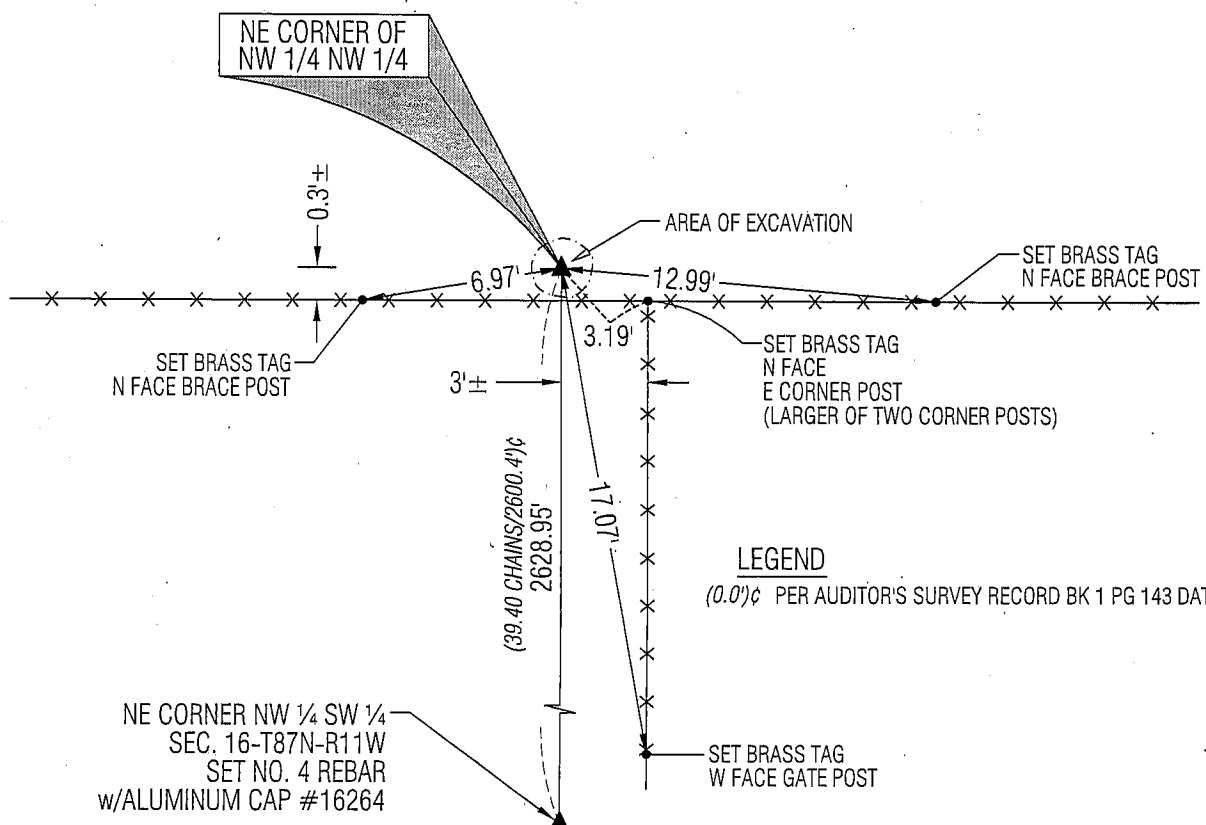
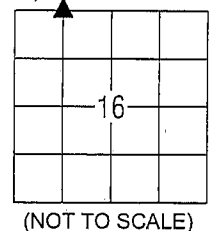
MONUMENT DESCRIPTION AND REMARKS:

NO USPLSCC ON FILE. SURVEY COMPLETED IN THE NW 1/4 OF SEC. 16-T87N-R11W.

→ **NE CORNER NW 1/4 NW 14:** AUDITOR'S SURVEY RECORD BK 1 PG 143 DATED 1/3/1867 CALLS FOR [STAKE (DIFFICULT TO DECIPHER)]. W.P.A. CHAINING NOTES DATED 1941 CALLS FOR [FOUND STONE]. EXCAVATED IN A 3'±Ø AREA AND FOUND A 0.7'±Ø LIMESTONE 2.5' DEEP ALONG FENCELINE. FOUND REMINANTS OF AN OLD CORNER POST WHILE EXCAVATING. SET NO. 4 REBAR w/ALUMINUM CAP #16264 ON TOP CENTER OF SAID LIMESTONE. UTILIZED SAID REBAR AS CORNER.

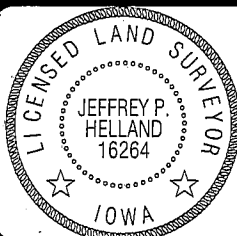
### PLAN VIEW

(SHOW A MINIMUM OF THREE REFERENCE TIES TO DURABLE PHYSICAL OBJECTS, RELEVANT MONUMENTS AND PHYSICAL CONDITIONS THAT WILL ENABLE RECOVERY OF THE CORNER.)



**HELLAND ENGINEERING & SURVEYING, LTD.**  
1107 Technology Parkway  
Cedar Falls, Iowa 50613-6951  
(319)-266-0161

SHINER = 8D NAIL & 1 5/16"Ø METAL SHINER  
BRASS TAG = 13/16"Ø BRASS TAG  
OPC = PLASTIC CAP (O=ORANGE, R=RED, Y=YELLOW)  
(00) RECORDED AS FILE NAME: 08-104C3.DWG



I hereby certify that this land surveying document was prepared and the related survey work was performed by me or under my direct personal supervision and that I am a duly licensed Land Surveyor under the laws of the State of Iowa.

Jeffrey P. Hellard 1/29/09  
License Number 16264  
My license renewal date is December 31, 2009.  
All pages or sheets are covered by this seal except:

## LIST CORNERS TO BE INDEXED

CORNER	SECTION	TOWNSHIP	RANGE
NE COR. NW ¼ NW ¼	16	87N	11W
SE COR. SW ¼ SW ¼	9	87N	11W
SW COR. SE ¼ SW ¼	9	87N	11W
NW COR. NE ¼ NW ¼	16	87N	11W

Rec'd