

Reserved for County Recorder's use.



Doc ID: 007685930001 Type: GEN
Recorded: 07/20/2017 at 11:07:35 AM
Fee Amt: \$7.00 Page 1 of 1
Black Hawk County Iowa
SANDIE L. SMITH RECORDER

File 2018-00001089

* Kyle J. Helland, 1107 Technology Parkway, Cedar Falls, Iowa 50613-6951, (319)-266-0161

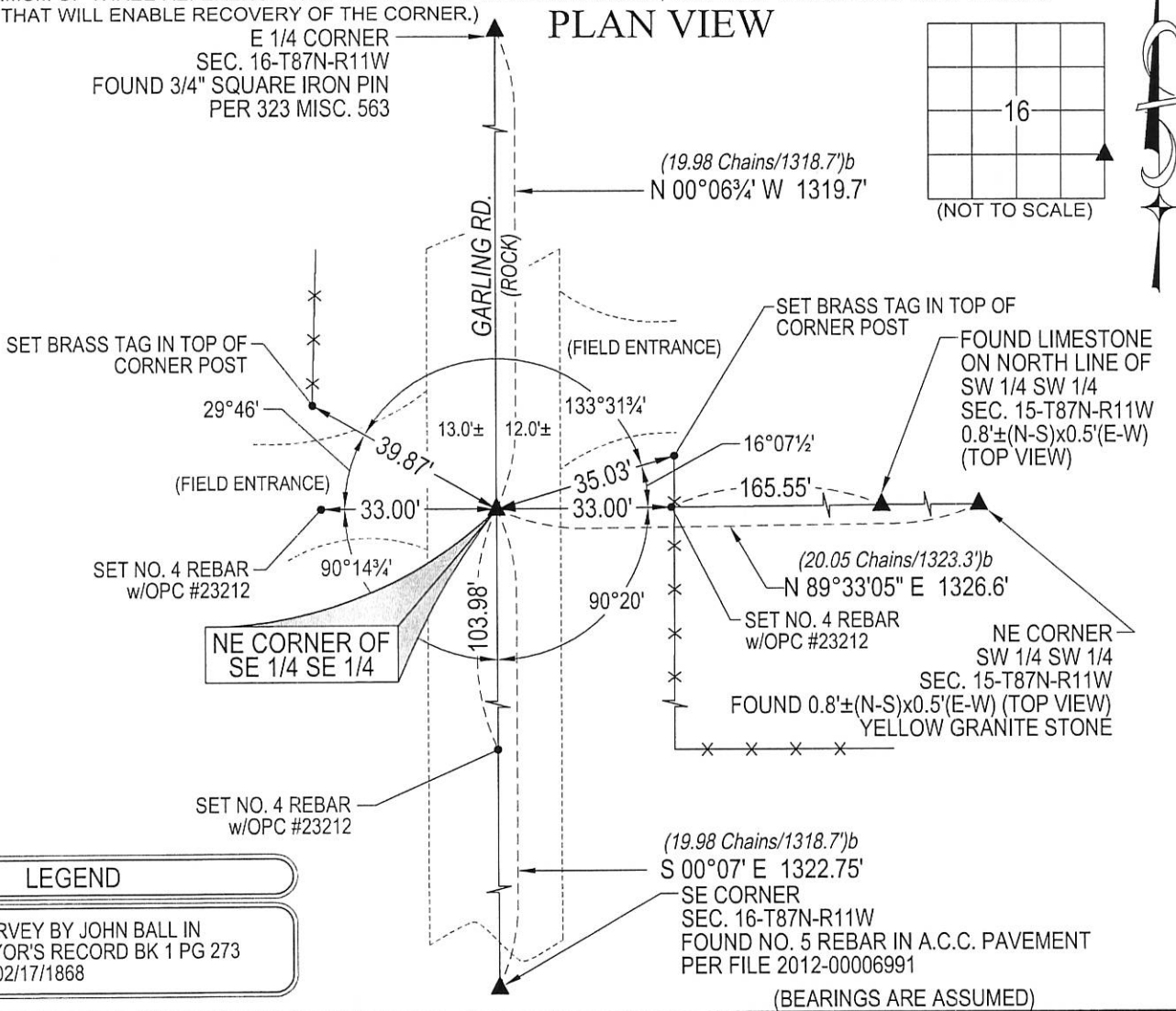
UNITED STATES PUBLIC LAND SURVEY CORNER CERTIFICATE
OF

LAND SURVEY MONUMENTS SITUATED IN SECTION NO. 16, TOWNSHIP NO. 87 NORTH, RANGE
NO. 11 WEST OF THE FIFTH PRINCIPAL MERIDIAN, BLACK HAWK COUNTY, IOWA.
PREVIOUSLY RECORDED IN N/A

(SHOW REASON FOR PREPARING THIS CERTIFICATE, THE EVIDENCE AND DETAILED PROCEDURES USED IN ESTABLISHING THE
CORNER POSITIONS AND MONUMENTATION FOUND OR PLACED.)

MONUMENT DESCRIPTION AND REMARKS:
NO USPLSCC ON FILE. SURVEY COMPLETED IN THE SE 1/4 OF SEC. 16-T87N-R11W.

→ **NE CORNER OF SE 1/4 SE 1/4:** NO BLACK HAWK COUNTY ENGINEER'S REFERENCE TIES AVAILABLE. SURVEY
BY JOHN BALL IN SURVEYOR'S RECORD BOOK 1 PAGE 273 DATED 02/17/1868 CALLS FOR [STONE]. SEARCHED
AREA WITH MAGNETIC LOCATOR, DUG A 3.0'± x 2.0'± DEEP HOLE AND PROBED IN ALL DIRECTIONS TO A
DEPTH OF 4.0'± AT APPROXIMATE LOCATION, NOTHING FOUND. THEREFORE SET NO. 4 REBAR x 24" LONG
w/OPC #23212 ON A LINE BETWEEN THE E 1/4 CORNER AND SE 1/4 CORNER AND AN EXTENSION OF THE NE
CORNER OF SW 1/4 SW 1/4 OF SECTION 15-T87N-R11W AND FOUND LIMESTONE 0.8'±(N-S)x0.5'±(E-W) (TOP
VIEW) ON THE NORTH LINE OF SW 1/4 SW 1/4 OF SECTION 15-T87N-R11W.
(SHOW A MINIMUM OF THREE REFERENCE TIES TO DURABLE PHYSICAL OBJECTS, RELEVANT MONUMENTS AND PHYSICAL
CONDITIONS THAT WILL ENABLE RECOVERY OF THE CORNER.)



LEGEND

(0.0')^b PER SURVEY BY JOHN BALL IN
SURVEYOR'S RECORD BK 1 PG 273
DATED 02/17/1868

HELLAND ENGINEERING & SURVEYING, LTD.
1107 Technology Parkway
Cedar Falls, Iowa 50613-6951
(319)-266-0161

SHINER = 8d. NAIL & 1 5/16"Ø METAL SHINER DRAWN BY: JBL
BRASS TAG = 8d. NAIL & 13/16"Ø BRASS TAG
OPC = PLASTIC CAP (O=ORANGE, R=RED, Y=YELLOW)
(00') RECORDED AS FILE NAME: 17-152-16-42.DWG



I hereby certify that this land surveying document was prepared
and the related survey work was performed by me or under my
direct personal supervision and that I am a duly licensed
Professional Land Surveyor under the laws of the State of Iowa.
Kyle J. Helland 6/24/17
Kyle J. Helland
License Number 23212
My license renewal date is December 31, 2017.
All pages or sheets are covered by this seal except:

LIST CORNERS TO BE INDEXED			
CORNER	SECTION	TOWNSHIP	RANGE
NE COR. SE 1/4 SE 1/4	16	87N	11W
SE COR. NE 1/4 SE 1/4	16	87N	11W
SW COR. NW 1/4 SW 1/4	15	87N	11W
NW COR. SW 1/4 SW 1/4	15	87N	11W