

Reserved for County Recorder's use.

Kyle J. Helland, 6109 Chancellor Drive, Cedar Falls, Iowa 50613-6919, (319)-266-0161

UNITED STATES PUBLIC LAND SURVEY CORNER CERTIFICATE OF

LAND SURVEY MONUMENTS SITUATED IN SECTION NO. 16, TOWNSHIP NO. 87 NORTH, RANGE
NO. 11 WEST OF THE FIFTH PRINCIPAL MERIDIAN, BLACK HAWK COUNTY, IOWA.
PREVIOUSLY RECORDED IN 323 MISC. 563.

(SHOW REASON FOR PREPARING THIS CERTIFICATE, THE EVIDENCE AND DETAILED PROCEDURES USED IN ESTABLISHING THE
CORNER POSITIONS AND MONUMENTATION FOUND OR PLACED.)

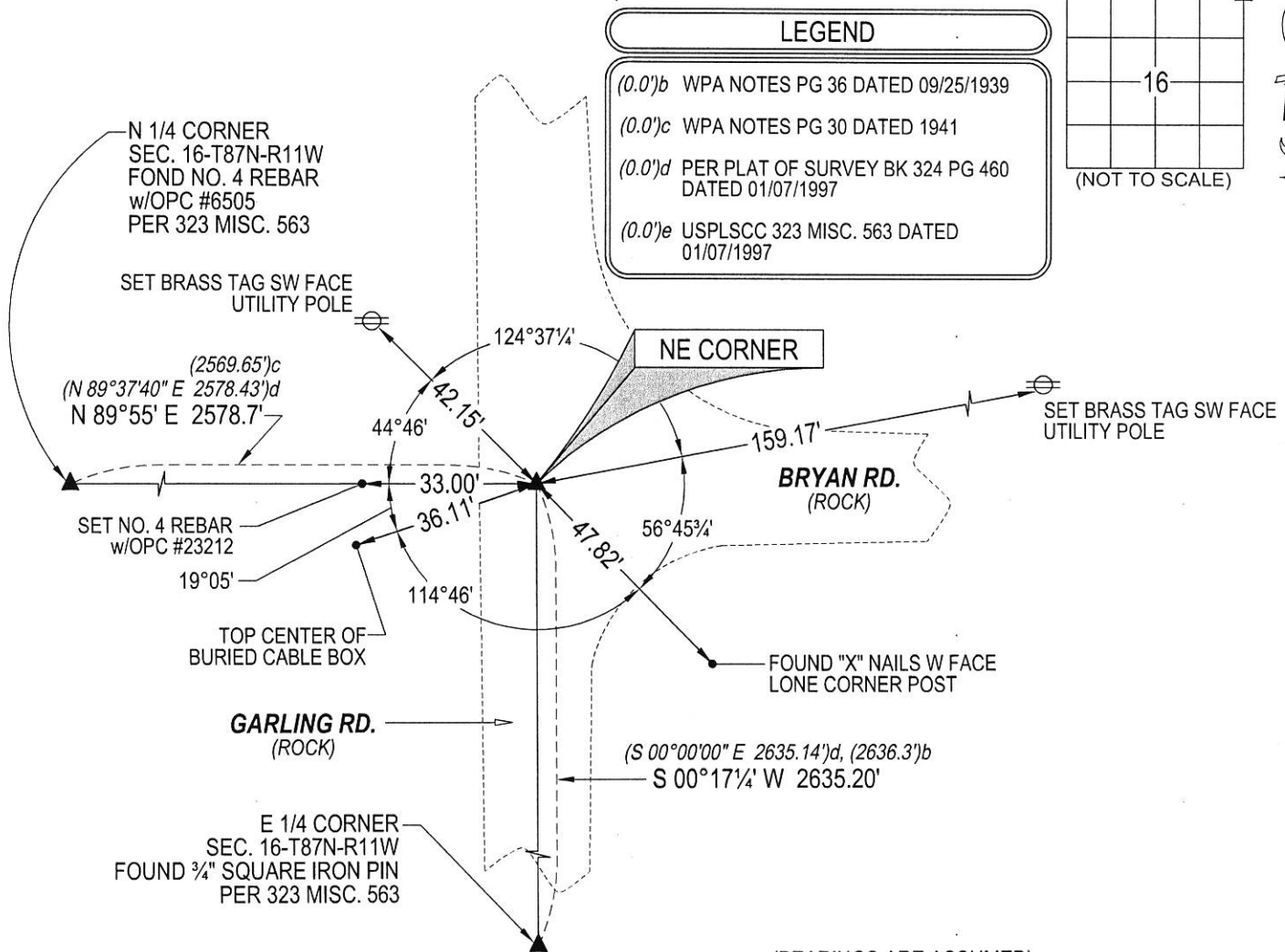
MONUMENT DESCRIPTION AND REMARKS:

MONUMENTATION HAS CHANGED. SURVEY COMPLETED IN THE NE 1/4 OF SEC. 16-T87N-R11W.

→ **NE CORNER:** WPA NOTES PG 36 DATED 09/25/1939 CALLS FOR [FOUND N1***RHEAD 8" x 17" x 29" LIMESTONE 4" x 6" x 8"
IRON BAR 1/2" x 24" C/M SET]. WPA NOTES PG 30 DATED 1941 CALLS FOR [C.M. ON R.L.]. USPLSCC 323 MISC. 563 DATED
01/07/1997 CALLS FOR [FOUND 60D NAIL W/FLAGGING]. SEARCHED AREA FOUND 60D NAIL AND NO. 4 REBAR 0.3' DEEP.
EXCAVATED FURTHER FOUND STANDARD CONCRETE MONUMENT 1.0' DEEP DIRECTLY BELOW FOUND NO. 4 REBAR.
THEREFORE UTILIZED NO. 4 REBAR AS CORNER.

PLAN VIEW

(SHOW A MINIMUM OF THREE REFERENCE TIES TO DURABLE PHYSICAL OBJECTS, RELEVANT MONUMENTS AND PHYSICAL
CONDITIONS THAT WILL ENABLE RECOVERY OF THE CORNER.)



HELLAND ENGINEERING & SURVEYING, LTD.
6109 Chancellor Drive
Cedar Falls, Iowa 50613-6919
(319)-266-0161

SHINER = 4d. NAIL & 1 5/16"Ø METAL SHINER
BRASS TAG = 4d. NAIL & 13/16"Ø BRASS TAG
OPC = PLASTIC CAP (O=ORANGE, R=RED, Y=YELLOW)
(00') RECORDED AS FILE NAME: 18-261-21.DWG



I hereby certify that this land surveying document was prepared
and the related survey work was performed by me or under my
direct personal supervision and that I am a duly licensed
Professional Land Surveyor under the laws of the State of Iowa.
Kyle J. Helland
License Number 23212
My license renewal date is December 31, 2019.
All pages or sheets are covered by this seal except:

LIST CORNERS TO BE INDEXED			
CORNER	SECTION	TOWNSHIP	RANGE
NE CORNER	16	87N	11W
SE CORNER	9	87N	11W
SW CORNER	10	87N	11W
NW CORNER	15	87N	11W