



Doc ID: 009472780001 Type: GEN
Recorded: 01/22/2019 at 12:14:06 PM
Fee Amt: \$7.00 Page 1 of 1
Black Hawk County Iowa
SANDIE L. SMITH RECORDER

File 2019-00011278

Reserved for County Recorder's use.

Kyle J. Helland, 6109 Chancellor Drive, Cedar Falls, Iowa 50613-6919, (319)-266-0161

UNITED STATES PUBLIC LAND SURVEY CORNER CERTIFICATE
OF

LAND SURVEY MONUMENTS SITUATED IN SECTION NO. 16, TOWNSHIP NO. 87 NORTH, RANGE NO. 11 WEST OF THE FIFTH PRINCIPAL MERIDIAN, BLACK HAWK COUNTY, IOWA.
PREVIOUSLY RECORDED IN N/A

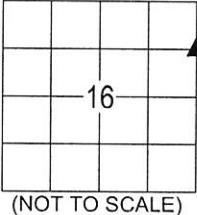
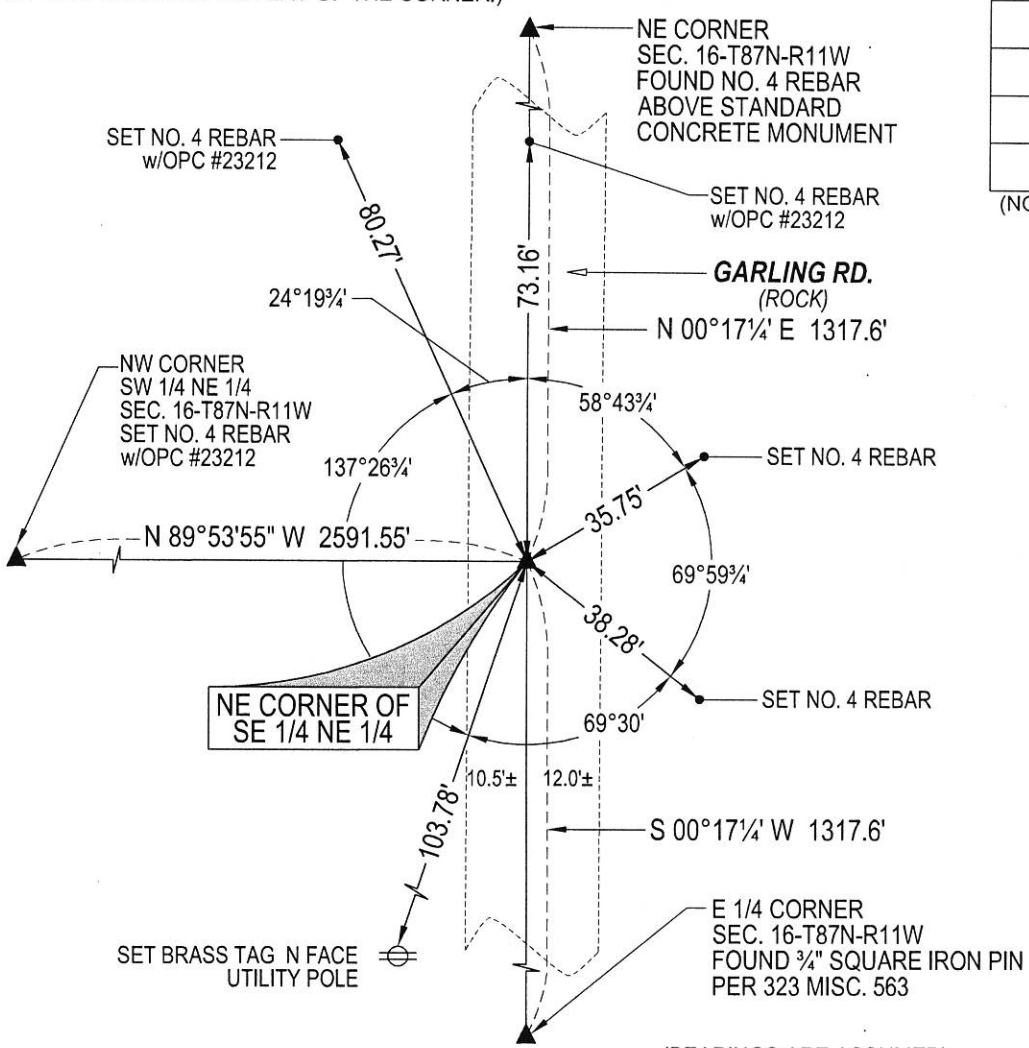
(SHOW REASON FOR PREPARING THIS CERTIFICATE, THE EVIDENCE AND DETAILED PROCEDURES USED IN ESTABLISHING THE CORNER POSITIONS AND MONUMENTATION FOUND OR PLACED.)

MONUMENT DESCRIPTION AND REMARKS:
NO USPLSCC ON FILE. SURVEY COMPLETED IN THE NE 1/4 OF SEC. 16-T87N-R11W.

NE CORNER OF THE SE 1/4 OF THE NE 1/4: NO BLACK HAWK COUNTY ENGINEER TIES ARE AVAILABLE NOR ANY OTHER PUBLIC DOCUMENTATION OF THE HISTORY AND PERPETUATION OF CORNER WAS AVAILABLE. PLAT OF SURVEY PARCEL "A" DATED 01/07/1997 RECORDED IN BOOK 324 PAGE 460 IN THE OFFICE OF THE BLACK HAWK COUNTY RECORDER. PLAT SHOWS 1/4 1/4 CALCULATED AT MIDPOINT. SEARCHED AREA WITH MAGNETIC DETECTOR, NOTHING FOUND, THEREFORE SET NO. 4 REBAR w/OPC LICENSE #23212 ON LINE AND AT MIDPOINT BETWEEN THE NE CORNER AND EAST 1/4 CORNER OF SAID SECTION 16-T87N-R11W.

PLAN VIEW

(SHOW A MINIMUM OF THREE REFERENCE TIES TO DURABLE PHYSICAL OBJECTS, RELEVANT MONUMENTS AND PHYSICAL CONDITIONS THAT WILL ENABLE RECOVERY OF THE CORNER.)



(BEARINGS ARE ASSUMED)



HELLAND ENGINEERING & SURVEYING, LTD.
6109 Chancellor Drive
Cedar Falls, Iowa 50613-6919
(319)-266-0161

SHINER = 4d. NAIL & 1 5/16"Ø METAL SHINER DRAWN BY: CDR
BRASS TAG = 4d. NAIL & 13/16"Ø BRASS TAG
OPC = PLASTIC CAP (O=ORANGE, R=RED, Y=YELLOW)
(00') RECORDED AS FILE NAME: 18-261-32.DWG



I hereby certify that this land surveying document was prepared and the related survey work was performed by me or under my direct personal supervision and that I am a duly licensed Professional Land Surveyor under the laws of the State of Iowa.
Kyle J. Helland 01/22/2019
Kyle J. Helland
License Number 23212
My license renewal date is December 31, 2019.
All pages or sheets are covered by this seal except:

LIST CORNERS TO BE INDEXED			
CORNER	SECTION	TOWNSHIP	RANGE
NE COR. SE 1/4 NE 1/4	16	87N	11W
SE COR. NE 1/4 NE 1/4	16	87N	11W
SW COR. NW 1/4 NW 1/4	15	87N	11W
NW COR. SW 1/4 NW 1/4	15	87N	11W