

SC
Misc
INDEX
MARGIN
PROOF
COMPARE

BLACK HAWK COUNTY IOWA: SS
Filed for record Jan 7, 1997 at
4:00 P.M. and recorded in Book 323
of Misc Page 563.
Patricia A. Sess Recorder
Fee 1-5.00x.

12838

PAUL H. HELLAND, 2322 W. 1ST ST., SUITE B, CEDAR FALLS, IOWA 50613, (319)-266-0161

UNITED STATES PUBLIC LAND SURVEY CORNER CERTIFICATE
OF

Land Survey Monuments situated in Section 16, Township 87, Range 11, of the Fifth Principal Meridian, BLACK HAWK County, Iowa.
Previously recorded in Book _____, Page _____.

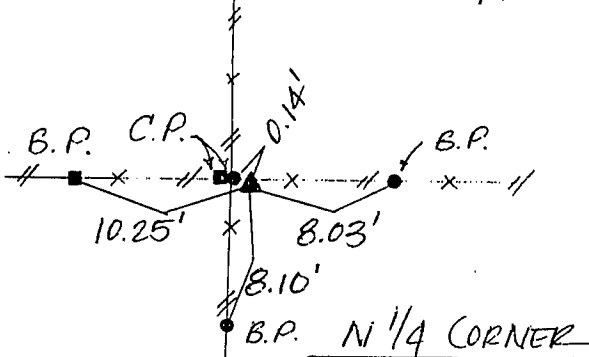
(Show reason for preparing this certificate, the evidence and detailed procedures used in establishing the corner positions and monumentation found or placed.)

Monument Description and Remarks: SURVEY DONE IN NE 1/4 SEC. 16-87-11
NE CORNER -> FOUND WOOD NAIL W/FLAGGING
E 1/4 CORNER -> FOUND 3/4" SQUARE PIN, 0.4' DEEP
CENTER -> SET NO. 4 REBAR W/CAP #6505 IN LINE W/ FENCES N & S
N 1/4 CORNER -> SET NO. 4 REBAR W/CAP #6505 NEAR C.P. AS PER TIES.

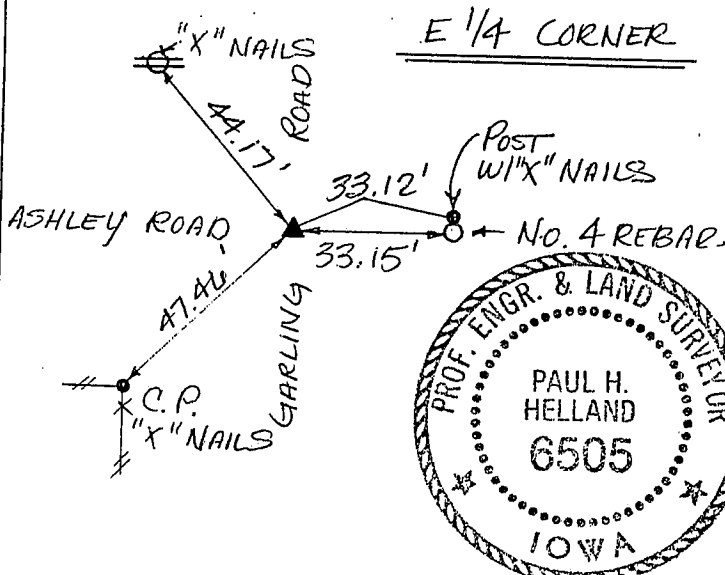
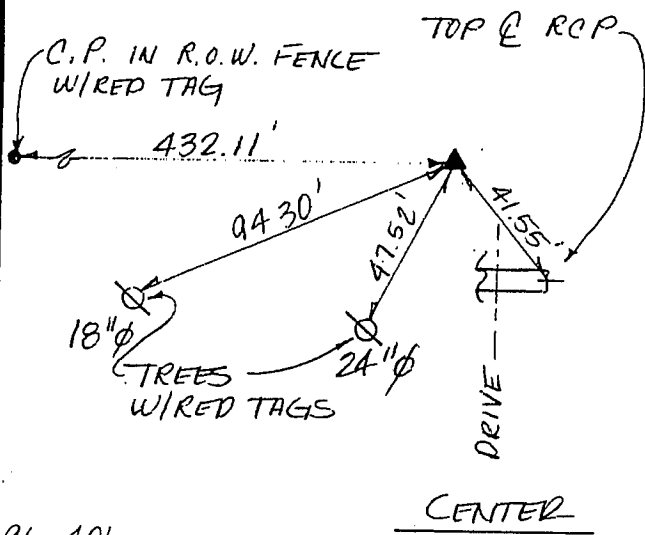
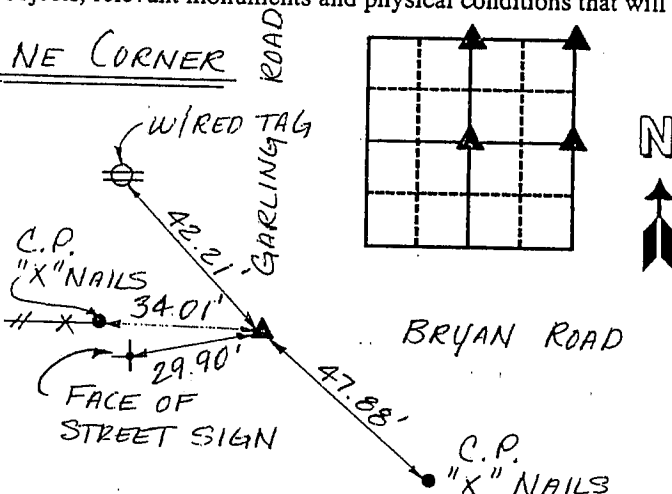
PLAN - VIEW

(Show a minimum of three reference ties to durable physical objects, relevant monuments and physical conditions that will enable recovery of the corner.)

ALL TIES ARE TO RED TAGS



NE CORNER



96-406

I HEREBY CERTIFY THAT THIS PLAT, MAP, SURVEY OR REPORT WAS MADE BY ME OR UNDER MY DIRECT PERSONAL SUPERVISION AND THAT I AM A DULY REGISTERED LAND SURVEYOR UNDER THE LAWS OF THE STATE OF IOWA

Paul H. Helland DATE 1/7/97
PAUL H. HELLAND, P.E. & R.L.S. IOWA REGISTRATION NO. 6505
MY REGISTRATION EXPIRES DECEMBER 31, 1997

HES

HELLAND ENGINEERING & SURVEYING, LTD.

THUNDER RIDGE BANK BUILDING
2322 WEST 1ST ST., SUITE B
CEDAR FALLS, IOWA 50613
319-266-0161

List Corners to be Indexed

Corners	Section	Twp	Range
NE	16	87	11
E 1/4	16	87	11
CENTER	16	87	11
N 1/4	16	87	11