

Jeffrey P. Helland, 1107 Technology Parkway, Cedar Falls, Iowa 50613-6951, (319)-266-0161

## UNITED STATES PUBLIC LAND SURVEY CORNER CERTIFICATE OF

LAND SURVEY MONUMENTS SITUATED IN SECTION NO. 16, TOWNSHIP NO. 87 NORTH, RANGE  
NO. 11 WEST OF THE FIFTH PRINCIPAL MERIDIAN, BLACK HAWK COUNTY, IOWA.  
PREVIOUSLY RECORDED IN N/A

(SHOW REASON FOR PREPARING THIS CERTIFICATE, THE EVIDENCE AND DETAILED PROCEDURES USED IN ESTABLISHING THE  
CORNER POSITIONS AND MONUMENTATION FOUND OR PLACED.)

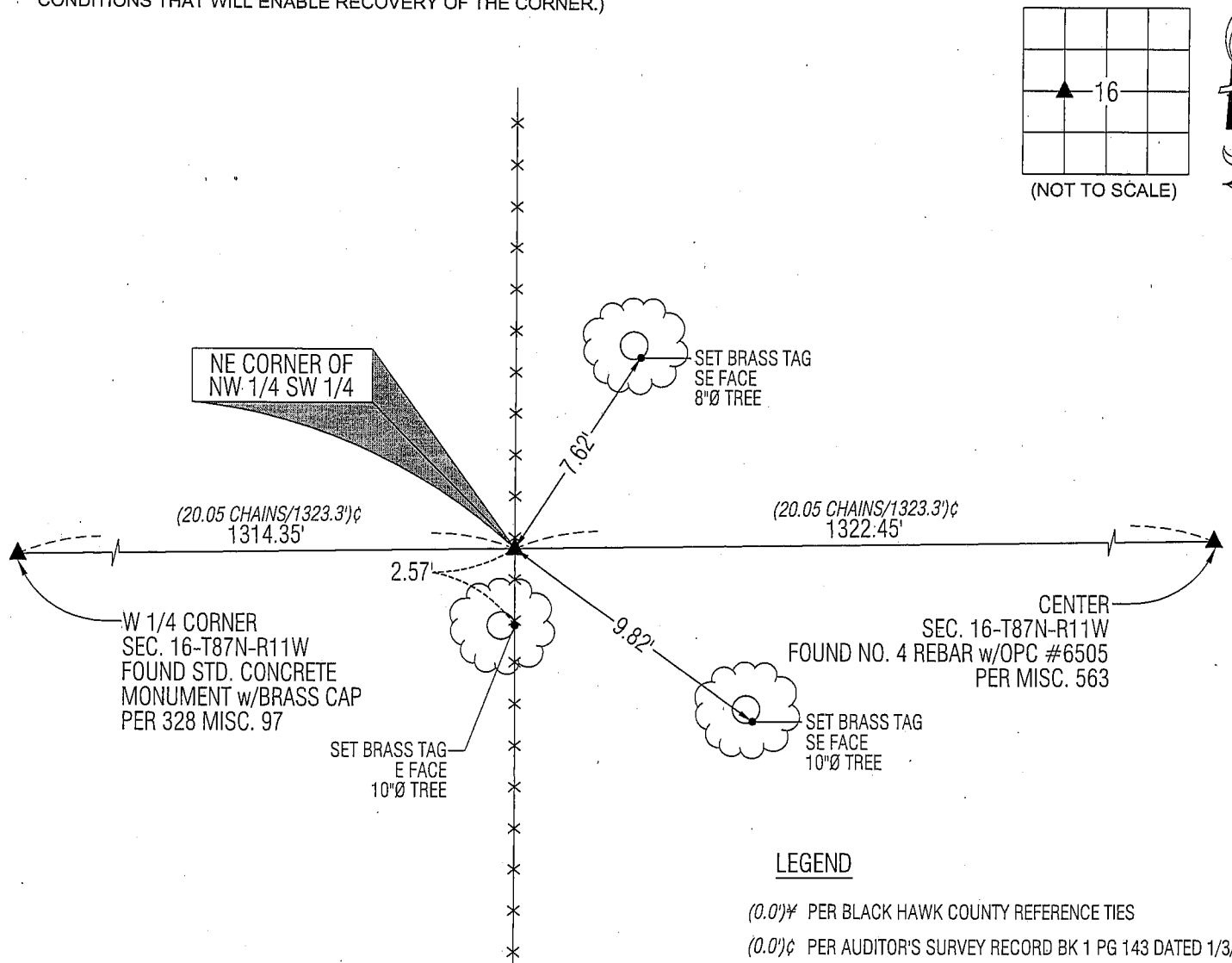
### MONUMENT DESCRIPTION AND REMARKS:

NO USPLSCC ON FILE. SURVEY COMPLETED IN THE NW 1/4 OF SEC. 16-T87N-R11W.

→ **NE CORNER NW 1/4 SW 1/4:** AUDITOR'S SURVEY RECORD BK 1 PG 143 DATED 1/3/1867 CALLS FOR BEARING TREES TO  
CORNER BUT DOES NOT STATE WHAT WAS SET IF ANYTHING (DIFFICULT TO DECIPHER). SET NO. 4 REBAR w/ALUMINUM  
CAP #16264 IN FENCELINE RUNNING NORTH AND SOUTH ON A STRAIGHT LINE BETWEEN THE W 1/4 CORNER AND THE  
CENTER OF SECTION.

### PLAN VIEW

(SHOW A MINIMUM OF THREE REFERENCE TIES TO DURABLE PHYSICAL OBJECTS, RELEVANT MONUMENTS AND PHYSICAL  
CONDITIONS THAT WILL ENABLE RECOVERY OF THE CORNER.)



### LEGEND

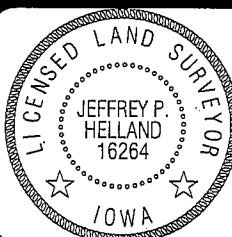
(0.0)' PER BLACK HAWK COUNTY REFERENCE TIES

(0.0)' PER AUDITOR'S SURVEY RECORD BK 1 PG 143 DATED 1/3/1867



HELLAND ENGINEERING & SURVEYING, LTD.  
1107 Technology Parkway  
Cedar Falls, Iowa 50613-6951  
(319)-266-0161

SHINER = 8D NAIL & 1 5/16"Ø METAL SHINER  
BRASS TAG = 13/16"Ø BRASS TAG  
OPC = PLASTIC CAP (O=ORANGE, R=RED, Y=YELLOW)  
(00)' RECORDED AS FILE NAME: 09-104C4.DWG



I hereby certify that this land surveying document was prepared  
and the related survey work was performed by me or under my  
direct personal supervision and that I am a duly licensed Land  
Surveyor under the laws of the State of Iowa.

*Jeffrey P. Helland* 1/29/09  
Jeffrey P. Helland  
License Number 16264  
My license renewal date is December 31, 2009.  
All pages or sheets are covered by this seal except:

### LIST CORNERS TO BE INDEXED

CORNER	SECTION	TOWNSHIP	RANGE
NE COR. NW 1/4 SW 1/4	16	87N	11W
SE COR. SW 1/4 NW 1/4	16	87N	11W
SW COR. SE 1/4 NW 1/4	16	87N	11W
NW COR. NE 1/4 SW 1/4	16	87N	11W

Rec.