



Doc ID: 003655490001 Type: GEN
Recorded: 02/05/2009 at 09:34:33 AM
Fee Amt: \$7.00 Page 1 of 1
Instr# 200800016307
Black Hawk County Iowa
JUDITH A MCCARTHY RECORDER
Book 1080 Page 12212 - 12212

File 2009-00014372

Jeffrey P. Helland, 1107 Technology Parkway, Cedar Falls, Iowa 50613-6951, (319)-266-0161

UNITED STATES PUBLIC LAND SURVEY CORNER CERTIFICATE OF

LAND SURVEY MONUMENTS SITUATED IN SECTION NO. 16, TOWNSHIP NO. 87 NORTH, RANGE
NO. 11 WEST OF THE FIFTH PRINCIPAL MERIDIAN, BLACK HAWK COUNTY, IOWA.

PREVIOUSLY RECORDED IN 323 MISC. 563.

(SHOW REASON FOR PREPARING THIS CERTIFICATE, THE EVIDENCE AND DETAILED PROCEDURES USED IN ESTABLISHING THE
CORNER POSITIONS AND MONUMENTATION FOUND OR PLACED.)

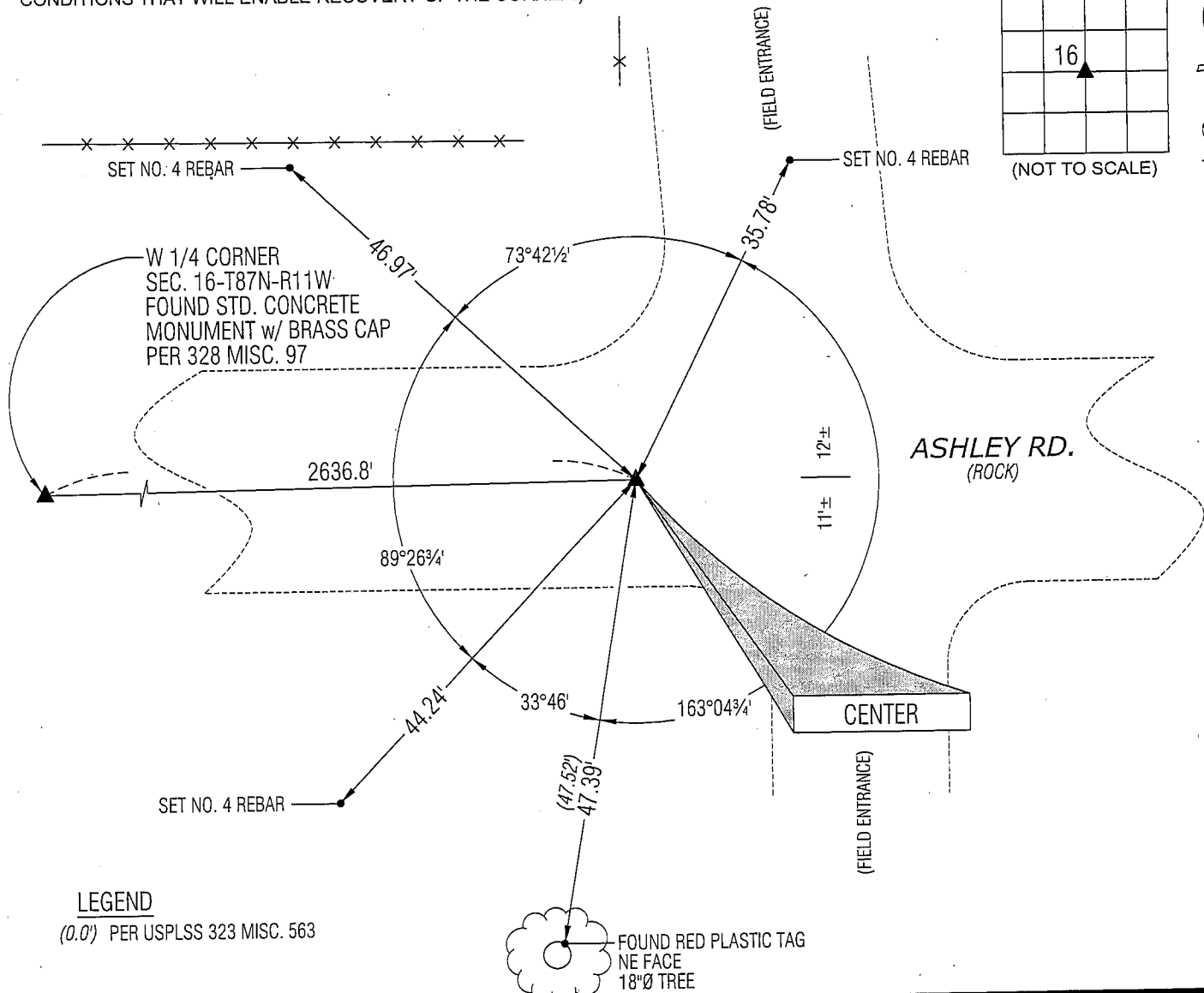
MONUMENT DESCRIPTION AND REMARKS:

USPLSCC 323 MISC. 563 REFERENCE TIES HAVE CHANGED. SURVEY COMPLETED IN THE NW 1/4 OF SEC. 16-T87N-R11W.

→ **CENTER:** AUDITOR'S SURVEY RECORD BK 1 PG 143 DATED 1/3/1867 CALLS FOR [STONE & STAKE]. USPLSCC 323 MISC.
563 DATED 1/7/1997 CALLS FOR [SET NO. 4 REBAR w/CAP #6505 IN LINE w/FENCES N&S]. FOUND NO. 4 REBAR w/OPC
#6505 0.2' DEEP CORRESPONDING TO LONE REMAINING TIE.

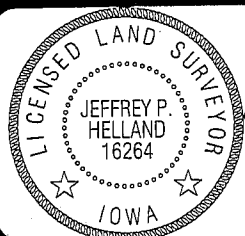
PLAN VIEW

(SHOW A MINIMUM OF THREE REFERENCE TIES TO DURABLE PHYSICAL OBJECTS, RELEVANT MONUMENTS AND PHYSICAL
CONDITIONS THAT WILL ENABLE RECOVERY OF THE CORNER.)



HELLAND ENGINEERING & SURVEYING, LTD.
1107 Technology Parkway
Cedar Falls, Iowa 50613-6951
(319)-266-0161

SHINER = 8D NAIL & 1 5/16"Ø METAL SHINER
BRASS TAG = 13/16"Ø BRASS TAG
OPC = PLASTIC CAP (O=ORANGE, R=RED, Y=YELLOW)
(00') RECORDED AS FILE NAME: 09-104C1.DWG



I hereby certify that this land surveying document was prepared
and the related survey work was performed by me or under my
direct personal supervision and that I am a duly licensed Land
Surveyor under the laws of the State of Iowa.

Jeffrey P. Helland 1/29/09
Jeffrey P. Helland
License Number 16264
My license renewal date is December 31, 2009.
All pages or sheets are covered by this seal except:

LIST CORNERS TO BE INDEXED

CORNER	SECTION	TOWNSHIP	RANGE
CENTER	16	87N	11W

2009-00014372

Rec