

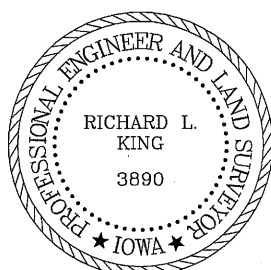
BLACK HAWK COUNTY ENGINEER

SLSI 9-94
CERT 12-96

Page #1 of 2

FIELD SURVEY: G.T. & B.K. 10/11/05
PREPARED BY: G. TINKER 11/14/05

Page #1 of 2



PREPARED BY: BLACK HAWK COUNTY ENGINEERS OFFICE
316 E. FIFTH STREET, ROOM 211 WATERLOO, IOWA 50703

PH.# (319) 833-3008
FAX.# (319) 833-3139

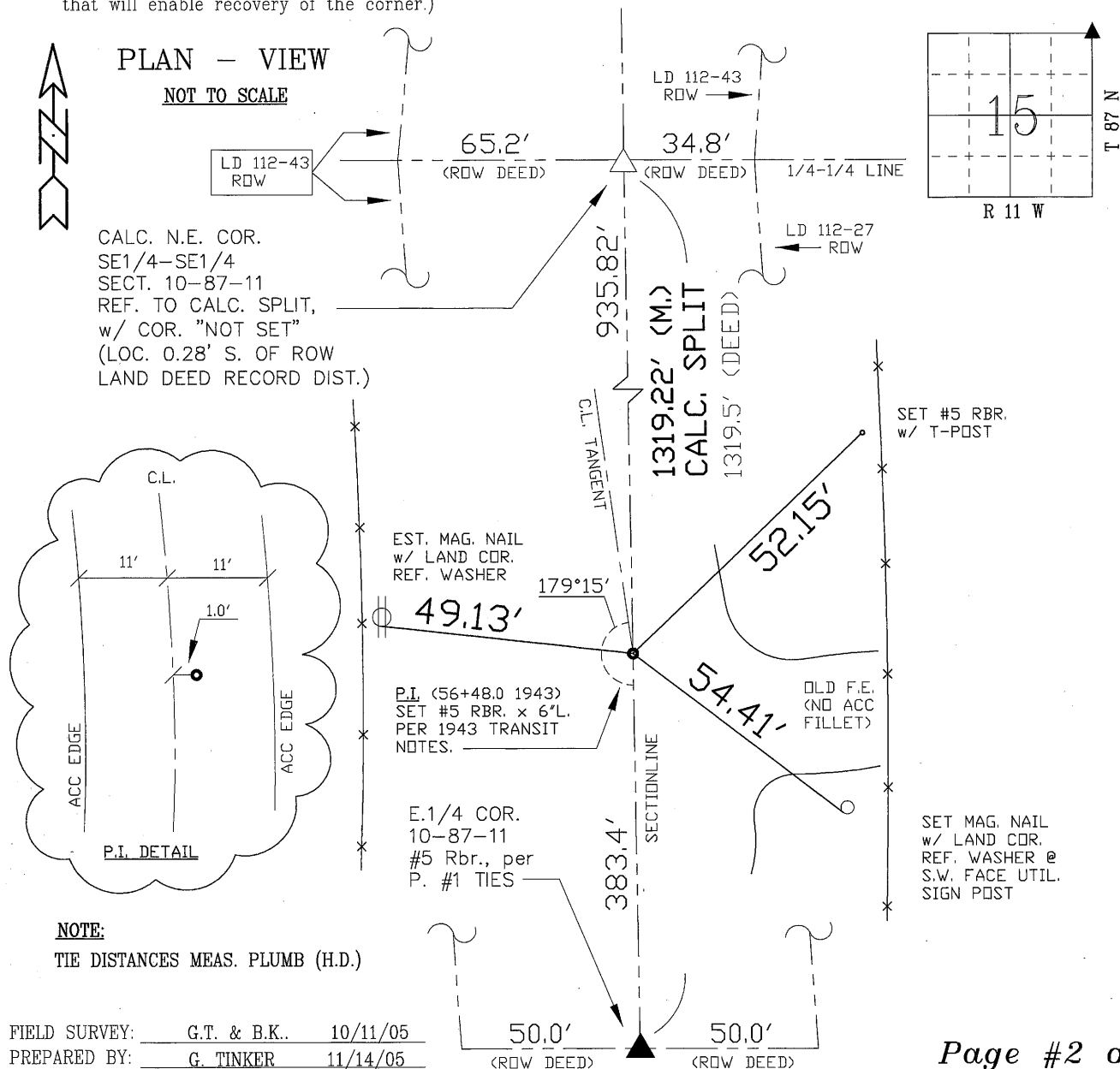
SLSI 9-94
CERT 12-96

UNITED STATES PUBLIC LAND SURVEY CORNER CERTIFICATE OF
Land Survey Monuments situated in Section 15, Township 87 N,
Range 11 W, of the Fifth Principal Meridian, BLACK HAWK County, Iowa.
Previously recorded in Misc. Book n/a, Page n/a, in County Recorder's Office.

(Show reason for preparing this certificate, the evidence and detailed procedures used in establishing the corner positions and monumentation found or placed.)

Monument Description and Remarks: CONTINUED: Page #2 of 2
PAGE #2 REFERENCE TIES TO P.I. NORTH OF SAID SECTION CORNER, BEING
A "SET #5 REBAR x 6" L.", FROM 1943 TRANSIT NOTES IN BK. #265 p. 55
OF CO. ENGINEERS FIELD BOOK RECORDS. NO ORIGINAL MONUMENT FOUND.
P.I. REFERENCE IS INCLUDED WITH COR. TIE FOR PUBLIC RECORD OF GEOM.
HISTORY. R.O.W PER INDEX RECORD DOES NOT FOLLOW GEOM. CURVES OF
ROADWAY DENOTED PER AS-BUILT PLAN INFORMATION, PER 1945 RELOCATION.
REFER TO LAND CORNER RECORD OF E. 1/4 COR. SECT. 10-87-11 FOR DETAILS
OF 1/16th CORNER NORTH, AND REFERENCE TO R.O.W. DEED CORNERS.
GEOMETRIC C.L. OCCUPATION OF JESSUP ROAD REFLECTS RECORD TRANSIT
NOTES AND PLAN GEOMETRIC LOCATION FOR THIS P.I. LOCATION, BEING STA.
56+48.0. AN AS-BUILT NOTE FROM 1945 SHOWED P.I. AT STA. 55+00 (S.),
YET FOUND P.I. AT STA. 67+06.9 (N.) WAS HELD WHERE AN ADDITIONAL AS-
BUILT NOTE DENOTED SAME INCONSISTANCY. P.I. LOC. 1' E. OF C.L. ACC JNT.

(Show a minimum of three reference ties to durable physical objects, relevant monuments and physical conditions that will enable recovery of the corner.)



Page #2 of 2