

Reserved for County Recorder's use.



Doc ID: 007685890001 Type: GEN
Recorded: 07/20/2017 at 11:06:16 AM
Fee Amt: \$7.00 Page 1 of 1
Black Hawk County Iowa
SANDIE L. SMITH RECORDER
File **2018-00001085**

Kyle J. Helland, 1107 Technology Parkway, Cedar Falls, Iowa 50613-6951, (319)-266-0161

UNITED STATES PUBLIC LAND SURVEY CORNER CERTIFICATE OF

LAND SURVEY MONUMENTS SITUATED IN SECTION NO. 15, TOWNSHIP NO. 87 NORTH, RANGE
NO. 11 WEST OF THE FIFTH PRINCIPAL MERIDIAN, BLACK HAWK COUNTY, IOWA.
PREVIOUSLY RECORDED IN N/A

(SHOW REASON FOR PREPARING THIS CERTIFICATE, THE EVIDENCE AND DETAILED PROCEDURES USED IN ESTABLISHING THE
CORNER POSITIONS AND MONUMENTATION FOUND OR PLACED.)

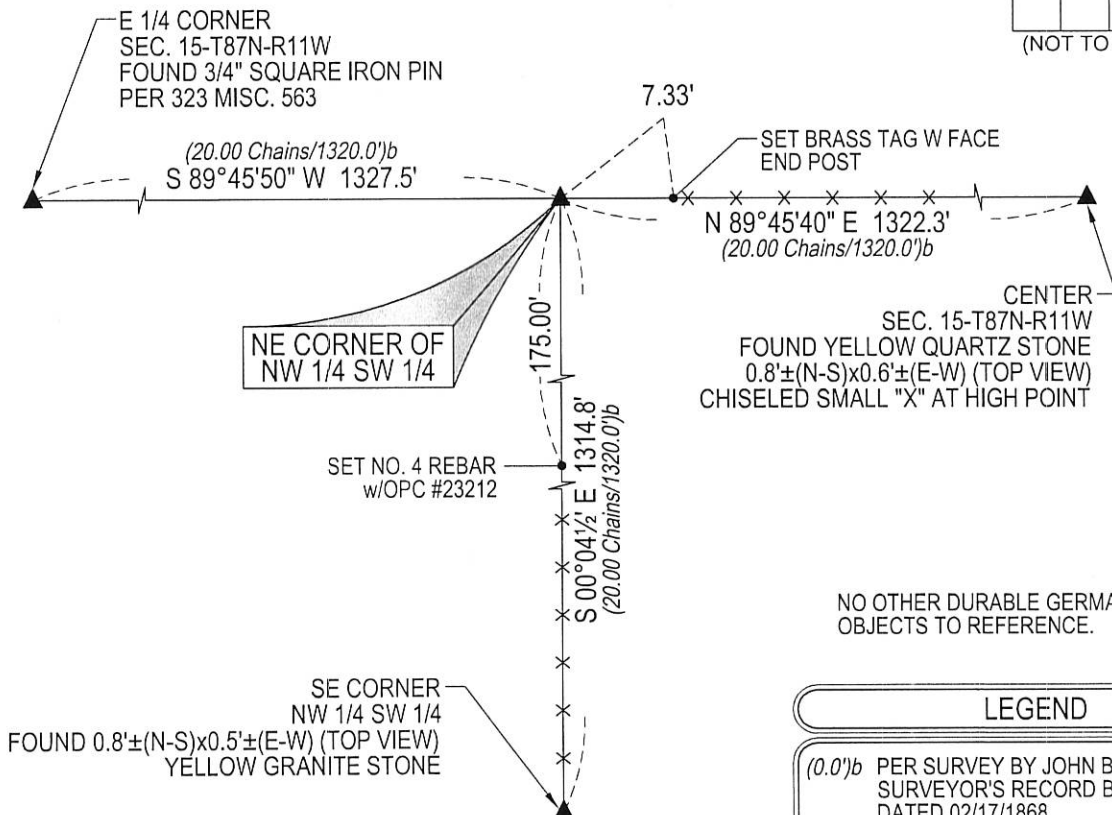
MONUMENT DESCRIPTION AND REMARKS:

NO USPLSCC ON FILE. SURVEY COMPLETED IN THE SW 1/4 OF SEC. 15-T87N-R11W.

→ **NE CORNER OF NW 1/4 SW 1/4:** NO BLACK HAWK COUNTY ENGINEER'S REFERENCE TIES AVAILABLE.
SURVEY BY JOHN BALL IN SURVEYOR'S RECORD BOOK 1 PAGE 273 DATED 02/17/1868 ESTABLISHED CORNER
WITH TWO BEARING TREES (TREES HAVE BEEN REMOVED). SEARCHED AREA WITH MAGNETIC LOCATOR
AND PROBED TO A DEPTH OF 4.0', AT INTERSECTION OF FENCE LINES AND EAST TO AND AROUND END POST,
NOTHING FOUND. THEREFORE, SET NO. 4 REBAR w/OPC #23212 AT THE INTERSECTION OF THE E 1/4 CORNER
AND CENTER OF SECTION AND THE SE CORNER OF NW 1/4 SW 1/4 AND THE NORTH SOUTH FENCE ON THE
EAST LINE OF SAID 1/4 1/4. NOTE: THE FENCE DIRECTLY SOUTH OF SAID SET MONUMENT AT ACREAGE
APPEARS TO MEANDER EASTERLY. THEREFORE, UTILIZED OLDER FENCE SOUTH OF ACREAGE IN
ESTABLISHMENT OF SAID CORNER.

(SHOW A MINIMUM OF THREE REFERENCE TIES TO DURABLE PHYSICAL OBJECTS, RELEVANT MONUMENTS AND PHYSICAL
CONDITIONS THAT WILL ENABLE RECOVERY OF THE CORNER.)

PLAN VIEW



(BEARINGS ARE ASSUMED)

NO OTHER DURABLE GERMANE PHYSICAL
OBJECTS TO REFERENCE.

LEGEND

(0.0')^b PER SURVEY BY JOHN BALL IN
SURVEYOR'S RECORD BK 1 PG 273
DATED 02/17/1868



HELLAND ENGINEERING & SURVEYING, LTD.
1107 Technology Parkway
Cedar Falls, Iowa 50613-6951
(319)-266-0161

SHINER = 8d. NAIL & 1 5/16"Ø METAL SHINER DRAWN BY: JBL
BRASS TAG = 8d. NAIL & 13/16"Ø BRASS TAG
OPC = PLASTIC CAP (O=ORANGE, R=RED, Y=YELLOW)
(00') RECORDED AS FILE NAME: 17-152-15-51.DWG



I hereby certify that this land surveying document was prepared
and the related survey work was performed by me or under my
direct personal supervision and that I am a duly licensed
Professional Land Surveyor under the laws of the State of Iowa.

Kyle J. Helland 6/24/17
Kyle J. Helland
License Number 23212
My license renewal date is December 31, 2017.
All pages or sheets are covered by this seal except:

LIST CORNERS TO BE INDEXED

CORNER	SECTION	TOWNSHIP	RANGE
NE COR. NW 1/4 SW 1/4	15	87N	11W
SE COR. SW 1/4 NW 1/4	15	87N	11W
SW COR. SE 1/4 NW 1/4	15	87N	11W
NW COR. NE 1/4 SW 1/4	15	87N	11W