

* Paul H. Helland, 1107 Technology Parkway, Cedar Falls, Iowa 50613-6951, (319)-266-0161

UNITED STATES PUBLIC LAND SURVEY CORNER CERTIFICATE
OF

LAND SURVEY MONUMENTS SITUATED IN SECTION NO. 14, TOWNSHIP NO. 87 NORTH, RANGE NO. 13 WEST OF THE FIFTH PRINCIPAL MERIDIAN, BLACK HAWK COUNTY, IOWA.
PREVIOUSLY RECORDED IN N/A

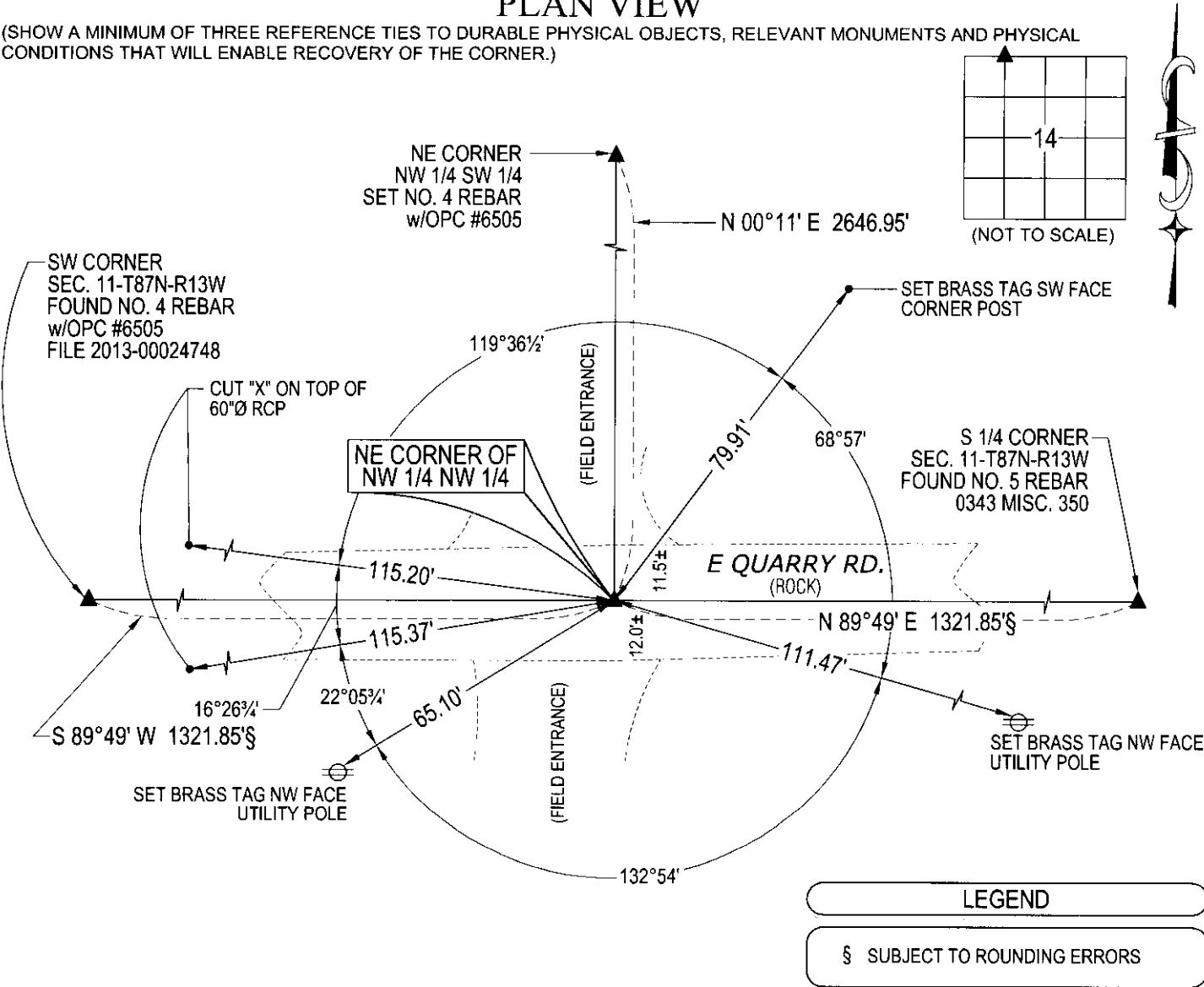
(SHOW REASON FOR PREPARING THIS CERTIFICATE, THE EVIDENCE AND DETAILED PROCEDURES USED IN ESTABLISHING THE CORNER POSITIONS AND MONUMENTATION FOUND OR PLACED.)

MONUMENT DESCRIPTION AND REMARKS:
NO USPLSCC ON FILE. SURVEY COMPLETED IN THE SW 1/4 OF SEC. 11-T87N-R13W.

NE CORNER NW 1/4 NW 1/4: NO BLACK HAWK COUNTY ENGINEER REFERENCE TIES AVAILABLE. SEARCHED AREA WITH MAGNETIC DETECTOR NOTHING FOUND, THEREFORE SET NO. 4 REBAR WITH LICENSE #6505 AT THE MIDPOINT OF A LINE BETWEEN THE SOUTH 1/4 CORNER AND SOUTHWEST CORNER OF SECTION 11-T87N-R13W.

PLAN VIEW

(SHOW A MINIMUM OF THREE REFERENCE TIES TO DURABLE PHYSICAL OBJECTS, RELEVANT MONUMENTS AND PHYSICAL CONDITIONS THAT WILL ENABLE RECOVERY OF THE CORNER.)



(BEARINGS ARE ASSUMED)

HES

HELLAND ENGINEERING & SURVEYING, LTD.

1107 Technology Parkway
Cedar Falls, Iowa 50613-6951
(319)-266-0161

PAUL H. HELLAND
6505

I hereby certify that this land surveying document was prepared and the related survey work was performed by me or under my direct personal supervision and that I am a duly licensed Professional Land Surveyor under the laws of the State of Iowa.

Paul H. Helland
License Number 6505
My license renewal date is December 31, 2015.
All pages or sheets are covered by this seal except:

11/13/15

SHINER = 8d. NAIL & 1 5/16"Ø METAL SHINER
BRASS TAG = 8d. NAIL & 13/16"Ø BRASS TAG
OPC = PLASTIC CAP (O=ORANGE, R=RED, Y=YELLOW)
(00') RECORDED AS
DRAWN BY: CDR
FILE NAME: 15-224-61.DWG

LIST CORNERS TO BE INDEXED

CORNER	SECTION	TOWNSHIP	RANGE
NE COR. NW 1/4 NW 1/4	14	87N	13W
SE COR. SW 1/4 SW 1/4	11	87N	13W
SW COR. SE 1/4 SW 1/4	11	87N	13W
NW COR. NE 1/4 NW 1/4	14	87N	13W

File Number: 2016-00009097 Seq: 1